

Item #	Ref. Sheet	Item Description	Unit	Quantity	Wastage	Quantity w/ Wastage	Unit Material Cost	Weight / Lbs.	Total Material Cost	Unit Manhour	Hourly Wage	Unit Labor Cost	Total Labor Cost	Sub Cost	Total Trade Cost
--------	------------	------------------	------	----------	---------	------------------------	-----------------------	---------------	------------------------	-----------------	-------------	--------------------	---------------------	----------	------------------

Building Summary	
Project:	*****
Location:	***** Lexington Avenue New York, NY 10017
Scope of Work:	HVAC - Ducting
Date:	3/27/2024

Bietail	
Projected Cost	\$ 2,349,251
Insurance	3% \$ 70,478
Contingency	5% \$ 117,463
Overhead & Profit	15% \$ 352,388
Tax	6.00% \$ 64,365
Suggest Bid	\$ 2,953,943

Item #	Ref. Sheet	Item Description	Unit	Quantity	Wastage	Quantity w/ Wastage	Unit Material Cost	Weight / Lbs.	Total Material Cost	Unit Manhour	Hourly Wage	Unit Labor Cost	Total Labor Cost	Sub Cost	Total Trade Cost
<b>IVISION.01GENERALREQUIREMENTS</b>															
1		Supervision and Coordination	LS	1	10%	1	\$ -	-	\$ -	0.000	\$ -	\$ -	\$ -	\$ -	\$ 35,200.00
2		Submittals and Shop drawings	LS	1	10%	1	\$ -	-	\$ -	0.000	\$ -	\$ -	\$ -	\$ -	\$ 2,000.00
3		Final Cleaning	LS	1	10%	1	\$ -	-	\$ -	0.000	\$ -	\$ -	\$ -	\$ -	\$ 6,000.00
4		Mobilization Costs	LS	1	10%	1	\$ -	-	\$ -	0.000	\$ -	\$ -	\$ -	\$ -	\$ 15,000.00
5		Temporary Control & Facilities	LS	1	10%	1	\$ -	-	\$ -	0.000	\$ -	\$ -	\$ -	\$ -	\$ 9,850.00
Subtotal(General Requirements)															\$ 68,050

Veracity Estimating

Project:	*****
Location:	***** Lexington Avenue New York, NY 10017
Scope of Work:	HVAC - Ducting
Date:	3/27/2024

Projected Cost	\$ 2,349,251
Insurance	3% \$ 70,478
Contingency	5% \$ 117,463
Overhead & Profit	15% \$ 352,388
Tax	6.00% \$ 64,365
Suggest Bid	\$ 2,953,943

Item #	Ref. Sheet	Item Description	Unit	Quantity	Wastage	Quantity w/ Wastage	Unit Material Cost	Weight / Lbs.	Total Material Cost	Unit Manhour	Hourly Wage	Unit Labor Cost	Total Labor Cost	Sub Cost	Total Trade Cost
<b>DIVISION23-HVAC</b>															
<b>8th Floor</b>															
<b>Rectangular Ducts</b>															
6		(5" W x 4" D) Rectangular Duct	LF	204	10%	224	\$ 2.20	354	\$ 493.68	0.185	\$ 98.00	\$ 18.13	\$ 4,068.37	\$	4,562.05
7		(6" W x 6" D) Rectangular Duct	LF	305	10%	336	\$ 1.54	706	\$ 516.17	0.136	\$ 98.00	\$ 13.30	\$ 4,463.32	\$	4,979.49
8		(8" W x 6" D) Rectangular Duct	LF	430	10%	473	\$ 2.32	1160	\$ 1,097.36	0.175	\$ 98.00	\$ 17.15	\$ 8,111.95	\$	9,209.31
9		(8" W x 8" D) Rectangular Duct	LF	580	10%	638	\$ 2.85	1788	\$ 1,818.30	0.198	\$ 98.00	\$ 19.40	\$ 12,379.75	\$	14,198.05
10		(10" W x 10" D) Rectangular Duct	LF	147	10%	162	\$ 2.57	567	\$ 415.08	0.227	\$ 98.00	\$ 22.20	\$ 3,589.25	\$	4,004.34
11		(10" W x 8" D) Rectangular Duct	LF	147	10%	162	\$ 2.31	510	\$ 373.85	0.204	\$ 98.00	\$ 19.99	\$ 3,232.71	\$	3,606.56
12		(12" W x 10" D) Rectangular Duct	LF	256	10%	282	\$ 2.82	1086	\$ 794.68	0.249	\$ 98.00	\$ 24.40	\$ 6,871.60	\$	7,666.28
13		(12" W x 12" D) Rectangular Duct	LF	100	10%	110	\$ 3.08	463	\$ 338.47	0.272	\$ 98.00	\$ 26.61	\$ 2,926.77	\$	3,265.24
14		(14" W x 10" D) Rectangular Duct	LF	15	10%	17	\$ 4.02	70	\$ 66.33	0.352	\$ 98.00	\$ 34.50	\$ 569.18	\$	635.51
15		(14" W x 12" D) Rectangular Duct	LF	285	10%	314	\$ 4.10	1428	\$ 1,285.35	0.376	\$ 98.00	\$ 36.85	\$ 11,551.85	\$	12,837.20
16		(14" W x 14" D) Rectangular Duct	LF	17	10%	19	\$ 4.59	92	\$ 85.83	0.405	\$ 98.00	\$ 39.69	\$ 742.20	\$	828.04
17		(16" W x 10" D) Rectangular Duct	LF	8	10%	9	\$ 4.26	41	\$ 37.49	0.376	\$ 98.00	\$ 36.85	\$ 324.26	\$	361.75
18		(16" W x 12" D) Rectangular Duct	LF	153	10%	168	\$ 4.59	826	\$ 772.50	0.405	\$ 98.00	\$ 39.69	\$ 6,679.83	\$	7,452.32
19		(16" W x 14" D) Rectangular Duct	LF	30	10%	33	\$ 4.91	174	\$ 162.13	0.434	\$ 98.00	\$ 42.48	\$ 1,401.94	\$	1,564.07
20		(18" W x 12" D) Rectangular Duct	LF	46	10%	51	\$ 4.91	266	\$ 248.60	0.434	\$ 98.00	\$ 42.48	\$ 2,149.64	\$	2,398.24
21		(18" W x 14" D) Rectangular Duct	LF	190	10%	209	\$ 5.24	1172	\$ 1,096.10	0.463	\$ 98.00	\$ 45.35	\$ 9,478.05	\$	10,574.15
22		(18" W x 16" D) Rectangular Duct	LF	9	10%	10	\$ 5.57	59	\$ 55.12	0.491	\$ 98.00	\$ 48.14	\$ 476.61	\$	531.73
23		(20" W x 14" D) Rectangular Duct	LF	14	10%	15	\$ 5.57	92	\$ 85.74	0.491	\$ 98.00	\$ 48.14	\$ 741.39	\$	827.13
24		(20" W x 16" D) Rectangular Duct	LF	5	10%	6	\$ 5.90	35	\$ 32.44	0.521	\$ 98.00	\$ 51.01	\$ 280.55	\$	312.99
25		(22" W x 12" D) Rectangular Duct	LF	70	10%	77	\$ 6.22	459	\$ 479.09	0.549	\$ 98.00	\$ 53.80	\$ 4,142.75	\$	4,621.85
26		(22" W x 14" D) Rectangular Duct	LF	80	10%	88	\$ 6.50	555	\$ 572.22	0.574	\$ 98.00	\$ 56.23	\$ 4,948.02	\$	5,520.24
27		(24" W x 12" D) Rectangular Duct	LF	110	10%	121	\$ 6.85	763	\$ 828.85	0.598	\$ 98.00	\$ 58.60	\$ 7,091.08	\$	7,919.93
28		(24" W x 16" D) Rectangular Duct	LF	34	10%	37	\$ 6.55	263	\$ 245.10	0.578	\$ 98.00	\$ 56.67	\$ 2,119.40	\$	2,364.50
29		(24" W x 18" D) Rectangular Duct	LF	110	10%	121	\$ 6.88	891	\$ 832.06	0.607	\$ 98.00	\$ 59.46	\$ 7,194.84	\$	8,026.90
30		(26" W x 12" D) Rectangular Duct	LF	16	10%	18	\$ 6.22	118	\$ 109.51	0.549	\$ 98.00	\$ 53.80	\$ 946.92	\$	1,056.42
31		(26" W x 20" D) Rectangular Duct	LF	6	10%	7	\$ 7.53	54	\$ 49.70	0.665	\$ 98.00	\$ 65.12	\$ 429.80	\$	479.50
32		(26" W x 12" D) Rectangular Duct	LF	21	10%	23	\$ 8.50	211	\$ 196.35	0.750	\$ 98.00	\$ 73.50	\$ 1,697.85	\$	1,894.20
33		(28" W x 12" D) Rectangular Duct	LF	100	10%	110	\$ 6.55	1041	\$ 720.89	0.578	\$ 98.00	\$ 56.67	\$ 6,233.54	\$	6,954.42
34		(30" W x 12" D) Rectangular Duct	LF	42	10%	46	\$ 6.55	340	\$ 302.77	0.578	\$ 98.00	\$ 56.67	\$ 2,618.08	\$	2,920.86
35		(30" W x 20" D) Rectangular Duct	LF	70	10%	77	\$ 8.16	675	\$ 628.32	0.720	\$ 98.00	\$ 70.56	\$ 5,433.12	\$	6,061.44
36		(32" W x 14" D) Rectangular Duct	LF	10	10%	11	\$ 9.18	89	\$ 100.98	0.810	\$ 98.00	\$ 79.38	\$ 873.18	\$	974.16
37		(32" W x 20" D) Rectangular Duct	LF	5	10%	6	\$ 9.98	51	\$ 54.89	0.852	\$ 98.00	\$ 83.50	\$ 459.23	\$	514.12
38		(32" W x 24" D) Rectangular Duct	LF	70	10%	77	\$ 10.25	756	\$ 789.25	0.898	\$ 98.00	\$ 88.00	\$ 6,776.31	\$	7,565.56
39		(32" W x 30" D) Rectangular Duct	LF	5	10%	6	\$ 11.23	60	\$ 61.77	0.912	\$ 98.00	\$ 89.38	\$ 491.57	\$	553.33
40		(34" W x 20" D) Rectangular Duct	LF	9	10%	10	\$ 10.80	94	\$ 106.87	0.953	\$ 98.00	\$ 93.35	\$ 924.12	\$	1,030.99
41		(34" W x 34" D) Rectangular Duct	LF	100	10%	110	\$ 13.52	1311	\$ 1,486.65	1.193	\$ 98.00	\$ 116.87	\$ 12,855.15	\$	14,341.80
42		(38" W x 12" D) Rectangular Duct	LF	49	10%	54	\$ 9.95	473	\$ 536.04	0.878	\$ 98.00	\$ 86.00	\$ 4,635.13	\$	5,171.17
43		(38" W x 36" D) Rectangular Duct	LF	20	10%	22	\$ 14.71	286	\$ 323.51	1.298	\$ 98.00	\$ 127.16	\$ 2,797.41	\$	3,120.92
44		(42" W x 24" D) Rectangular Duct	LF	45	10%	50	\$ 13.94	573	\$ 690.03	1.230	\$ 98.00	\$ 120.54	\$ 5,966.73	\$	6,656.76
45		(42" W x 26" D) Rectangular Duct	LF	44	10%	48	\$ 13.75	577	\$ 665.50	1.250	\$ 98.00	\$ 122.50	\$ 5,929.00	\$	6,594.50
46		(48" W x 12" D) Rectangular Duct	LF	50	10%	55	\$ 11.99	578	\$ 659.18	1.058	\$ 98.00	\$ 103.64	\$ 5,699.93	\$	6,359.10
47		(48" W x 18" D) Rectangular Duct	LF	30	10%	33	\$ 13.18	382	\$ 434.78	1.163	\$ 98.00	\$ 113.93	\$ 3,759.53	\$	4,194.30
48		(48" W x 26" D) Rectangular Duct	LF	10	10%	11	\$ 14.71	143	\$ 161.76	1.298	\$ 98.00	\$ 127.16	\$ 1,398.71	\$	1,560.46
49		(48" W x 28" D) Rectangular Duct	LF	60	10%	66	\$ 14.98	879	\$ 988.68	1.300	\$ 98.00	\$ 127.40	\$ 8,408.40	\$	9,397.08
50		(54" W x 24" D) Rectangular Duct	LF	20	10%	22	\$ 16.02	301	\$ 352.50	1.414	\$ 98.00	\$ 138.55	\$ 3,048.05	\$	3,400.54
51		(58" W x 18" D) Rectangular Duct	LF	80	10%	88	\$ 18.02	1172	\$ 1,585.76	1.590	\$ 98.00	\$ 155.82	\$ 13,712.16	\$	15,297.92
52		(76" W x 18" D) Rectangular Duct	LF	15	10%	17	\$ 24.44	272	\$ 403.22	2.156	\$ 98.00	\$ 211.31	\$ 3,486.66	\$	3,889.88
<b>Flexible Duct</b>															
53		(6" Dia) Flexible Duct	LF	71	10%	78	\$ 3.02	-	\$ 235.86	0.045	\$ 98.00	\$ 4.41	\$ 344.42	\$	580.28
54		(8" Dia) Flexible Duct	LF	93	10%	102	\$ 3.85	-	\$ 393.86	0.048	\$ 98.00	\$ 4.70	\$ 481.22	\$	875.07
55		(10" Dia) Flexible Duct	LF	269	10%	296	\$ 4.85	-	\$ 1,435.12	0.035	\$ 98.00	\$ 3.43	\$ 1,014.94	\$	2,450.05
<b>Connections</b>															
56		Tee	EA	213	0%	213	\$ 108.62	-	\$ 23,136.06	1.200	\$ 98.00	\$ 117.60	\$ 25,048.80	\$	48,184.86
57		Transition	EA	173	0%	173	\$ 125.62	-	\$ 21,732.26	1.380	\$ 98.00	\$ 135.24	\$ 23,396.52	\$	45,128.78
58		Radius Elbow	EA	155	0%	155	\$ 85.66	-	\$ 13,277.61	0.985	\$ 98.00	\$ 96.53	\$ 14,962.15	\$	28,239.76

Project: \*\*\*\*\*  
 Location: \*\*\*\*\* Lexington Avenue New York, NY 10017  
 Scope of Work: HVAC - Ducting  
 Date: 3/27/2024

Projected Cost	\$	2,349,251
Insurance	3%	70,478
Contingency	5%	117,463
Overhead & Profit	15%	352,388
Tax	6.00%	64,365
Suggest Bid	\$	2,953,943

Item #	Ref. Sheet	Item Description	Unit	Quantity	Wastage	Quantity w/ Wastage	Unit Material Cost	Weight / Lbs.	Total Material Cost	Unit Manhour	Hourly Wage	Unit Labor Cost	Total Labor Cost	Sub Cost	Total Trade Cost
<b>10th Floor</b>															
<b>Rectangular Ducts</b>															
59		5" W x 4" D Rectangular Duct	LF	109	10%	120	\$ 2.20	190	\$ 263.78	0.185	\$ 98.00	\$ 18.13	\$ 2,173.79	\$	2,437.57
60		6" W x 6" D Rectangular Duct	LF	465	10%	512	\$ 1.54	1076	\$ 786.94	0.136	\$ 98.00	\$ 13.30	\$ 6,804.74	\$	7,591.68
61		8" W x 6" D Rectangular Duct	LF	220	10%	242	\$ 2.32	594	\$ 561.44	0.175	\$ 98.00	\$ 17.15	\$ 4,150.30	\$	4,711.74
62		8" W x 8" D Rectangular Duct	LF	376	10%	414	\$ 2.85	1160	\$ 1,178.76	0.198	\$ 98.00	\$ 19.40	\$ 8,025.49	\$	9,204.25
63		10" W x 8" D Rectangular Duct	LF	257	10%	283	\$ 2.31	892	\$ 653.60	0.204	\$ 98.00	\$ 19.99	\$ 5,651.74	\$	6,305.34
64		10" W x 10" D Rectangular Duct	LF	195	10%	215	\$ 2.57	752	\$ 550.62	0.227	\$ 98.00	\$ 22.20	\$ 4,761.26	\$	5,311.88
65		12" W x 6" D Rectangular Duct	LF	5	10%	6	\$ 2.82	18	\$ 15.52	0.249	\$ 98.00	\$ 24.40	\$ 134.21	\$	149.73
66		12" W x 8" D Rectangular Duct	LF	52	10%	57	\$ 2.82	201	\$ 161.42	0.249	\$ 98.00	\$ 24.40	\$ 1,395.79	\$	1,557.21
67		12" W x 10" D Rectangular Duct	LF	378	10%	416	\$ 2.82	1603	\$ 1,173.39	0.249	\$ 98.00	\$ 24.40	\$ 10,146.35	\$	11,319.74
68		12" W x 12" D Rectangular Duct	LF	136	10%	150	\$ 3.08	629	\$ 460.32	0.272	\$ 98.00	\$ 26.61	\$ 3,980.41	\$	4,440.73
69		14" W x 8" D Rectangular Duct	LF	5	10%	6	\$ 4.10	22	\$ 22.55	0.376	\$ 98.00	\$ 36.85	\$ 202.66	\$	225.21
70		14" W x 10" D Rectangular Duct	LF	25	10%	28	\$ 4.02	116	\$ 110.55	0.352	\$ 98.00	\$ 34.50	\$ 948.64	\$	1,059.19
71		14" W x 12" D Rectangular Duct	LF	173	10%	190	\$ 4.10	867	\$ 780.23	0.376	\$ 98.00	\$ 36.85	\$ 7,012.17	\$	7,792.40
72		14" W x 14" D Rectangular Duct	LF	24	10%	26	\$ 4.59	130	\$ 121.18	0.405	\$ 98.00	\$ 39.69	\$ 1,047.82	\$	1,168.99
73		16" W x 8" D Rectangular Duct	LF	88	10%	97	\$ 2.31	407	\$ 223.80	0.204	\$ 98.00	\$ 19.99	\$ 1,935.23	\$	2,159.03
74		16" W x 10" D Rectangular Duct	LF	23	10%	25	\$ 4.26	116	\$ 107.74	0.376	\$ 98.00	\$ 36.82	\$ 931.63	\$	1,039.37
75		16" W x 12" D Rectangular Duct	LF	115	10%	127	\$ 4.59	621	\$ 580.64	0.405	\$ 98.00	\$ 39.69	\$ 5,020.79	\$	5,601.42
76		18" W x 12" D Rectangular Duct	LF	53	10%	58	\$ 4.91	307	\$ 286.43	0.434	\$ 98.00	\$ 42.48	\$ 2,476.76	\$	2,763.19
77		18" W x 14" D Rectangular Duct	LF	23	10%	25	\$ 5.24	142	\$ 132.69	0.463	\$ 98.00	\$ 45.35	\$ 1,147.34	\$	1,280.03
78		18" W x 16" D Rectangular Duct	LF	11	10%	12	\$ 5.57	73	\$ 67.37	0.491	\$ 98.00	\$ 48.14	\$ 582.52	\$	649.89
79		20" W x 6" D Rectangular Duct	LF	14	10%	15	\$ 5.57	71	\$ 85.74	0.491	\$ 98.00	\$ 48.14	\$ 741.39	\$	827.13
80		20" W x 10" D Rectangular Duct	LF	65	10%	72	\$ 5.90	376	\$ 421.78	0.521	\$ 98.00	\$ 51.01	\$ 3,647.14	\$	4,068.92
81		20" W x 12" D Rectangular Duct	LF	54	10%	59	\$ 5.90	333	\$ 350.40	0.521	\$ 98.00	\$ 51.01	\$ 3,029.93	\$	3,380.34
82		20" W x 14" D Rectangular Duct	LF	20	10%	22	\$ 5.90	132	\$ 129.78	0.521	\$ 98.00	\$ 51.01	\$ 1,122.20	\$	1,251.98
83		20" W x 16" D Rectangular Duct	LF	29	10%	32	\$ 5.57	202	\$ 177.60	0.491	\$ 98.00	\$ 48.14	\$ 1,535.75	\$	1,713.35
84		22" W x 10" D Rectangular Duct	LF	59	10%	65	\$ 5.57	364	\$ 361.33	0.491	\$ 98.00	\$ 48.14	\$ 3,124.45	\$	3,485.78
85		22" W x 12" D Rectangular Duct	LF	49	10%	54	\$ 6.22	321	\$ 335.37	0.549	\$ 98.00	\$ 53.80	\$ 2,899.93	\$	3,235.29
86		22" W x 14" D Rectangular Duct	LF	31	10%	34	\$ 6.50	216	\$ 221.74	0.574	\$ 98.00	\$ 56.23	\$ 1,917.36	\$	2,139.09
87		24" W x 12" D Rectangular Duct	LF	20	10%	22	\$ 6.85	139	\$ 150.70	0.598	\$ 98.00	\$ 58.60	\$ 1,289.29	\$	1,439.99
88		24" W x 14" D Rectangular Duct	LF	51	10%	56	\$ 6.50	374	\$ 364.79	0.574	\$ 98.00	\$ 56.23	\$ 3,154.36	\$	3,519.15
89		24" W x 16" D Rectangular Duct	LF	118	10%	130	\$ 6.55	910	\$ 850.64	0.578	\$ 98.00	\$ 56.67	\$ 7,355.57	\$	8,206.22
90		26" W x 8" D Rectangular Duct	LF	32	10%	35	\$ 6.22	210	\$ 218.94	0.607	\$ 98.00	\$ 59.49	\$ 2,093.91	\$	2,312.85
91		26" W x 10" D Rectangular Duct	LF	77	10%	85	\$ 7.53	535	\$ 637.79	0.601	\$ 98.00	\$ 58.90	\$ 4,988.66	\$	5,626.45
92		26" W x 12" D Rectangular Duct	LF	48	10%	53	\$ 7.53	352	\$ 397.58	0.601	\$ 98.00	\$ 58.90	\$ 3,109.81	\$	3,507.40
93		26" W x 16" D Rectangular Duct	LF	6	10%	7	\$ 7.53	49	\$ 49.70	0.601	\$ 98.00	\$ 58.90	\$ 388.73	\$	438.42
94		30" W x 10" D Rectangular Duct	LF	18	10%	20	\$ 9.12	139	\$ 180.58	0.578	\$ 98.00	\$ 56.64	\$ 1,121.55	\$	1,302.13
95		30" W x 12" D Rectangular Duct	LF	7	10%	8	\$ 9.12	57	\$ 70.22	0.578	\$ 98.00	\$ 56.64	\$ 436.16	\$	506.38
96		30" W x 14" D Rectangular Duct	LF	20	10%	22	\$ 9.12	170	\$ 200.64	0.578	\$ 98.00	\$ 56.64	\$ 1,246.17	\$	1,446.81
97		30" W x 16" D Rectangular Duct	LF	4	10%	4	\$ 9.12	36	\$ 40.13	0.578	\$ 98.00	\$ 56.64	\$ 249.23	\$	289.36
98		32" W x 16" D Rectangular Duct	LF	87	10%	96	\$ 8.50	620	\$ 813.45	0.750	\$ 98.00	\$ 73.50	\$ 7,033.95	\$	7,847.40
99		32" W x 18" D Rectangular Duct	LF	61	10%	67	\$ 8.50	588	\$ 570.35	0.750	\$ 98.00	\$ 73.50	\$ 4,931.85	\$	5,502.20
100		34" W x 14" D Rectangular Duct	LF	28	10%	31	\$ 8.50	259	\$ 261.80	0.750	\$ 98.00	\$ 73.50	\$ 2,263.80	\$	2,525.60
101		34" W x 28" D Rectangular Duct	LF	15	10%	17	\$ 8.50	180	\$ 140.25	0.750	\$ 98.00	\$ 73.50	\$ 1,212.75	\$	1,353.00
102		36" W x 16" D Rectangular Duct	LF	13	10%	14	\$ 8.50	131	\$ 121.55	0.750	\$ 98.00	\$ 73.50	\$ 1,051.05	\$	1,172.60
103		38" W x 18" D Rectangular Duct	LF	42	10%	46	\$ 8.50	454	\$ 392.70	0.750	\$ 98.00	\$ 73.50	\$ 3,395.70	\$	3,788.40
104		40" W x 16" D Rectangular Duct	LF	10	10%	11	\$ 12.40	108	\$ 136.40	0.912	\$ 98.00	\$ 89.38	\$ 983.14	\$	1,119.54
105		40" W x 18" D Rectangular Duct	LF	27	10%	30	\$ 12.40	302	\$ 368.28	0.912	\$ 98.00	\$ 89.38	\$ 2,654.47	\$	3,022.75
106		44" W x 14" D Rectangular Duct	LF	108	10%	119	\$ 12.40	1207	\$ 1,473.12	0.912	\$ 98.00	\$ 89.38	\$ 10,617.87	\$	12,090.99
107		46" W x 18" D Rectangular Duct	LF	32	10%	35	\$ 12.40	395	\$ 436.48	0.912	\$ 98.00	\$ 89.38	\$ 3,146.04	\$	3,582.52
108		48" W x 16" D Rectangular Duct	LF	18	10%	20	\$ 12.40	222	\$ 245.52	0.912	\$ 98.00	\$ 89.38	\$ 1,769.64	\$	2,015.16
109		58" W x 18" D Rectangular Duct	LF	8	10%	9	\$ 13.40	118	\$ 117.92	0.300	\$ 98.00	\$ 29.40	\$ 258.72	\$	376.64
110		64" W x 10" D Rectangular Duct	LF	44	10%	48	\$ 12.40	628	\$ 600.16	0.350	\$ 98.00	\$ 34.30	\$ 6,660.12	\$	7,260.28
111		48" W x 26" D Rectangular Duct	LF	15	10%	17	\$ 12.40	214	\$ 204.60	0.912	\$ 98.00	\$ 89.38	\$ 1,474.70	\$	1,679.30
112		5" W x 4" D Rectangular Duct	LF	52	10%	57	\$ 2.20	91	\$ 125.84	0.185	\$ 98.00	\$ 18.13	\$ 1,037.04	\$	1,162.88
113		6" W x 6" D Rectangular Duct	LF	67	10%	74	\$ 1.54	155	\$ 113.39	0.136	\$ 98.00	\$ 13.30	\$ 980.47	\$	1,093.86
114		8" W x 8" D Rectangular Duct	LF	149	10%	164	\$ 2.85	460	\$ 467.12	0.198	\$ 98.00	\$ 19.40	\$ 3,180.32	\$	3,647.43
115		10" W x 8" D Rectangular Duct	LF	7	10%	8	\$ 2.31	25	\$ 17.80	0.204	\$ 98.00	\$ 19.99	\$ 153.94	\$	171.74
116		10" W x 10" D Rectangular Duct	LF	8	10%	9	\$ 2.57	31	\$ 22.59	0.227	\$ 98.00	\$ 22.20	\$ 195.33	\$	217.92
117		12" W x 12" D Rectangular Duct	LF	18	10%	20	\$ 3.08	84	\$ 60.92	0.272	\$ 98.00	\$ 26.61	\$ 526.82	\$	587.74
118		18" W x 12" D Rectangular Duct	LF	43	10%	47	\$ 4.91	249	\$ 232.38	0.434	\$ 98.00	\$ 42.48	\$ 2,009.45	\$	2,241.83
119		22" W x 14" D Rectangular Duct	LF	12	10%	13	\$ 6.50	84	\$ 85.83	0.574	\$ 98.00	\$ 56.23	\$ 742.20	\$	828.04
120		24" W x 18" D Rectangular Duct	LF	36	10%	40	\$ 6.88	292	\$ 272.31	0.607	\$ 98.00	\$ 59.46	\$ 2,354.68	\$	2,626.98
121		44" W x 22" D Rectangular Duct	LF	9	10%	10	\$ 12.40	115	\$ 122.76	0.912	\$ 98.00	\$ 89.38	\$ 884.82	\$	1,007.58
122		44" W x 28" D Rectangular Duct	LF	26	10%	29	\$ 12.40	361	\$ 354.64	0.912	\$ 98.00	\$ 89.38	\$ 2,556.15	\$	2,910.79
123		48" W x 26" D Rectangular Duct	LF	6	10%	7	\$ 12.40	86	\$ 81.84	0.912	\$ 98.00	\$ 89.38	\$ 589.88	\$	671.72
124		6" W x 6" D Rectangular Duct	LF	26	10%	29	\$ 1.54	61	\$ 44.00	0.136	\$ 98.00	\$ 13.30	\$ 380.48	\$	424.48
125		8" W x 6" D Rectangular Duct	LF	77	10%	85	\$ 2.32	208	\$ 196.50	0.175	\$ 98.00	\$ 17.15	\$ 1,452.61	\$	1,649.11
126		10" W x 8" D Rectangular Duct	LF	26	10%	29	\$ 2.31	91	\$ 66.12	0.204	\$ 9				

Projected Cost	\$	2,349,251
Insurance	3%	70,478
Contingency	5%	117,463
Overhead & Profit	15%	352,388
Tax	6.00%	64,365
Suggest Bid	\$	2,953,943

Project:	*****
Location:	***** Lexington Avenue New York, NY 10017
Scope of Work:	HVAC - Ducting
Date:	3/27/2024

Item #	Ref. Sheet	Item Description	Unit	Quantity	Wastage	Quantity w/ Wastage	Unit Material Cost	Weight / Lbs.	Total Material Cost	Unit Manhour	Hourly Wage	Unit Labor Cost	Total Labor Cost	Sub Cost	Total Trade Cost
<b>13th Floor</b>															
<b>Rectangular Ducts</b>															
139		6" W x 6" D Rectangular Duct	LF	669	10%	736	\$ 1.54	2321	\$ 1,132.18	0.136	\$ 98.00	\$ 13.30	\$ 9,790.05	\$	10,922.23
140		8" W x 6" D Rectangular Duct	LF	656	10%	722	\$ 2.32	1770	\$ 1,674.11	0.175	\$ 98.00	\$ 17.15	\$ 12,375.44	\$	14,049.55
141		8" W x 8" D Rectangular Duct	LF	109	10%	120	\$ 2.85	337	\$ 341.72	0.198	\$ 98.00	\$ 19.40	\$ 2,326.54	\$	2,668.25
142		10" W x 8" D Rectangular Duct	LF	102	10%	112	\$ 2.31	354	\$ 259.41	0.204	\$ 98.00	\$ 19.99	\$ 2,243.10	\$	2,502.51
143		10" W x 10" D Rectangular Duct	LF	151	10%	166	\$ 2.57	582	\$ 426.38	0.227	\$ 98.00	\$ 22.20	\$ 3,686.92	\$	4,113.30
144		12" W x 8" D Rectangular Duct	LF	110	10%	121	\$ 2.82	424	\$ 341.46	0.249	\$ 98.00	\$ 24.40	\$ 2,952.64	\$	3,294.10
145		12" W x 10" D Rectangular Duct	LF	117	10%	129	\$ 3.02	496	\$ 363.19	0.249	\$ 98.00	\$ 24.40	\$ 3,140.54	\$	3,503.73
146		12" W x 12" D Rectangular Duct	LF	22	10%	24	\$ 2.88	102	\$ 74.46	0.272	\$ 98.00	\$ 26.61	\$ 643.89	\$	718.35
147		14" W x 8" D Rectangular Duct	LF	49	10%	54	\$ 4.10	208	\$ 220.99	0.376	\$ 98.00	\$ 36.85	\$ 1,986.11	\$	2,207.10
148		14" W x 10" D Rectangular Duct	LF	115	10%	127	\$ 4.02	532	\$ 508.53	0.352	\$ 98.00	\$ 34.50	\$ 4,363.74	\$	4,872.27
149		14" W x 12" D Rectangular Duct	LF	177	10%	195	\$ 4.10	887	\$ 798.27	0.376	\$ 98.00	\$ 36.85	\$ 7,174.31	\$	7,972.58
150		14" W x 14" D Rectangular Duct	LF	49	10%	54	\$ 4.59	265	\$ 247.40	0.405	\$ 98.00	\$ 39.69	\$ 2,139.29	\$	2,386.69
151		16" W x 8" D Rectangular Duct	LF	58	10%	64	\$ 2.31	269	\$ 147.51	0.204	\$ 98.00	\$ 19.99	\$ 1,275.49	\$	1,423.00
152		16" W x 10" D Rectangular Duct	LF	56	10%	62	\$ 4.26	281	\$ 262.32	0.376	\$ 98.00	\$ 36.82	\$ 2,268.33	\$	2,530.65
153		16" W x 12" D Rectangular Duct	LF	70	10%	77	\$ 4.59	378	\$ 353.43	0.405	\$ 98.00	\$ 39.69	\$ 3,056.13	\$	3,409.56
154		16" W x 14" D Rectangular Duct	LF	4	10%	4	\$ 4.91	24	\$ 21.62	0.434	\$ 98.00	\$ 42.48	\$ 186.93	\$	208.54
155		18" W x 10" D Rectangular Duct	LF	108	10%	119	\$ 4.91	583	\$ 583.66	0.434	\$ 98.00	\$ 42.48	\$ 5,046.98	\$	5,630.64
156		18" W x 12" D Rectangular Duct	LF	73	10%	80	\$ 4.91	422	\$ 394.51	0.434	\$ 98.00	\$ 42.48	\$ 3,411.38	\$	3,805.90
157		18" W x 14" D Rectangular Duct	LF	6	10%	7	\$ 5.24	37	\$ 34.58	0.465	\$ 98.00	\$ 45.57	\$ 300.76	\$	335.35
158		18" W x 18" D Rectangular Duct	LF	15	10%	17	\$ 4.91	105	\$ 81.06	0.434	\$ 98.00	\$ 42.48	\$ 700.97	\$	782.03
159		20" W x 10" D Rectangular Duct	LF	36	10%	40	\$ 5.57	209	\$ 220.47	0.491	\$ 98.00	\$ 48.14	\$ 1,906.44	\$	2,126.92
160		20" W x 12" D Rectangular Duct	LF	79	10%	87	\$ 5.57	488	\$ 483.82	0.491	\$ 98.00	\$ 48.14	\$ 4,183.58	\$	4,667.40
161		20" W x 14" D Rectangular Duct	LF	23	10%	25	\$ 5.57	151	\$ 140.86	0.491	\$ 98.00	\$ 48.14	\$ 1,218.01	\$	1,358.86
162		22" W x 12" D Rectangular Duct	LF	68	10%	75	\$ 6.22	446	\$ 465.41	0.549	\$ 98.00	\$ 53.80	\$ 4,024.39	\$	4,489.80
163		22" W x 14" D Rectangular Duct	LF	29	10%	32	\$ 6.50	202	\$ 207.43	0.574	\$ 98.00	\$ 56.23	\$ 1,793.66	\$	2,001.09
164		24" W x 12" D Rectangular Duct	LF	135	10%	149	\$ 6.85	937	\$ 1,017.23	0.598	\$ 98.00	\$ 58.60	\$ 8,702.69	\$	9,719.92
165		24" W x 14" D Rectangular Duct	LF	38	10%	42	\$ 6.50	279	\$ 271.80	0.574	\$ 98.00	\$ 56.23	\$ 2,350.31	\$	2,622.11
166		26" W x 12" D Rectangular Duct	LF	7	10%	8	\$ 7.53	52	\$ 57.98	0.601	\$ 98.00	\$ 58.90	\$ 453.51	\$	511.50
167		28" W x 16" D Rectangular Duct	LF	8	10%	9	\$ 9.18	68	\$ 80.78	0.710	\$ 98.00	\$ 69.58	\$ 612.30	\$	693.09
168		30" W x 14" D Rectangular Duct	LF	28	10%	31	\$ 9.12	238	\$ 280.90	0.578	\$ 98.00	\$ 56.64	\$ 1,744.64	\$	2,025.53
169		30" W x 16" D Rectangular Duct	LF	10	10%	11	\$ 9.12	89	\$ 100.32	0.578	\$ 98.00	\$ 56.64	\$ 623.08	\$	723.40
170		32" W x 16" D Rectangular Duct	LF	40	10%	44	\$ 8.50	370	\$ 374.00	0.750	\$ 98.00	\$ 73.50	\$ 3,234.00	\$	3,608.00
171		36" W x 18" D Rectangular Duct	LF	9	10%	10	\$ 8.50	94	\$ 84.15	0.750	\$ 98.00	\$ 73.50	\$ 727.65	\$	811.80
172		42" W x 16" D Rectangular Duct	LF	16	10%	18	\$ 12.40	179	\$ 218.24	0.912	\$ 98.00	\$ 89.38	\$ 1,573.02	\$	1,791.26
173		42" W x 18" D Rectangular Duct	LF	22	10%	24	\$ 12.40	255	\$ 300.08	0.912	\$ 98.00	\$ 89.38	\$ 2,162.90	\$	2,462.98
174		46" W x 16" D Rectangular Duct	LF	14	10%	15	\$ 12.40	173	\$ 190.96	0.912	\$ 98.00	\$ 89.38	\$ 1,376.39	\$	1,567.35
175		46" W x 18" D Rectangular Duct	LF	7	10%	8	\$ 12.40	87	\$ 95.48	0.912	\$ 98.00	\$ 89.38	\$ 688.20	\$	783.68
176		48" W x 18" D Rectangular Duct	LF	11	10%	12	\$ 12.40	140	\$ 150.04	0.912	\$ 98.00	\$ 89.38	\$ 1,081.45	\$	1,231.49
177		58" W x 22" D Rectangular Duct	LF	39	10%	43	\$ 13.40	602	\$ 574.86	0.300	\$ 98.00	\$ 29.40	\$ 1,261.26	\$	1,836.12
178		50" W x 18" D Rectangular Duct	LF	10	10%	11	\$ 13.40	132	\$ 147.40	0.300	\$ 98.00	\$ 29.40	\$ 323.40	\$	470.80
<b>Flexible Duct</b>															
179		6" Dia Flexible Duct	LF	71	10%	78	\$ 3.02	-	\$ 235.86	0.045	\$ 98.00	\$ 4.41	\$ 344.42	\$	580.28
180		8" Dia Flexible Duct	LF	93	10%	102	\$ 3.85	-	\$ 393.86	0.048	\$ 98.00	\$ 4.70	\$ 481.22	\$	875.07
181		10" Dia Flexible Duct	LF	269	10%	296	\$ 4.85	-	\$ 1,435.12	0.035	\$ 98.00	\$ 3.43	\$ 1,014.94	\$	2,450.05
<b>Connection</b>															
182		Tee	EA	169	0%	169	\$ 108.62	-	\$ 18,356.78	1.200	\$ 98.00	\$ 117.60	\$ 19,874.40	\$	38,231.18
183		Radius Elbow	EA	114	0%	114	\$ 85.66	-	\$ 9,765.47	0.985	\$ 98.00	\$ 96.53	\$ 11,004.42	\$	20,769.89
184		Transition	EA	121	0%	121	\$ 125.62	-	\$ 15,200.02	1.380	\$ 98.00	\$ 135.24	\$ 16,364.04	\$	31,564.06
<b>14th Floor</b>															
<b>Rectangular Ducts</b>															
185		5" W x 4" D Rectangular Duct	LF	27	10%	30	\$ 2.20	47	\$ 65.34	0.185	\$ 98.00	\$ 18.13	\$ 538.46	\$	603.80
186		6" W x 6" D Rectangular Duct	LF	558	10%	614	\$ 1.54	1291	\$ 944.33	0.136	\$ 98.00	\$ 13.30	\$ 8,165.69	\$	9,110.02
187		8" W x 6" D Rectangular Duct	LF	530	10%	583	\$ 2.32	1430	\$ 1,352.56	0.175	\$ 98.00	\$ 17.15	\$ 9,998.45	\$	11,351.01
188		8" W x 8" D Rectangular Duct	LF	139	10%	153	\$ 2.85	429	\$ 435.77	0.198	\$ 98.00	\$ 19.40	\$ 2,966.87	\$	3,402.64
189		10" W x 8" D Rectangular Duct	LF	174	10%	191	\$ 2.31	604	\$ 442.52	0.204	\$ 98.00	\$ 19.99	\$ 3,826.47	\$	4,268.99
190		10" W x 10" D Rectangular Duct	LF	106	10%	117	\$ 2.57	409	\$ 299.31	0.227	\$ 98.00	\$ 22.20	\$ 2,588.17	\$	2,887.48
191		12" W x 8" D Rectangular Duct	LF	17	10%	19	\$ 2.82	66	\$ 52.77	0.249	\$ 98.00	\$ 24.40	\$ 456.32	\$	509.09
192		12" W x 10" D Rectangular Duct	LF	312	10%	343	\$ 2.82	1323	\$ 968.51	0.249	\$ 98.00	\$ 24.40	\$ 8,374.77	\$	9,343.28
193		12" W x 12" D Rectangular Duct	LF	21	10%	23	\$ 3.08	98	\$ 71.08	0.272	\$ 98.00	\$ 26.61	\$ 614.62	\$	685.70
194		14" W x 8" D Rectangular Duct	LF	9	10%	10	\$ 4.10	39	\$ 40.59	0.376	\$ 98.00	\$ 36.85	\$ 364.80	\$	405.39
195		14" W x 10" D Rectangular Duct	LF	65	10%	72	\$ 4.02	301	\$ 287.43	0.352	\$ 98.00	\$ 34.50	\$ 2,466.46	\$	2,753.89
196		14" W x 12" D Rectangular Duct	LF	131	10%	144	\$ 4.10	657	\$ 590.81	0.376	\$ 98.00	\$ 36.85	\$ 5,309.80	\$	5,900.61
197		14" W x 14" D Rectangular Duct	LF	33	10%	36	\$ 4.59	179	\$ 166.62	0.405	\$ 98.00	\$ 39.69	\$ 1,440.75	\$	1,607.36
198		16" W x 8" D Rectangular Duct	LF	4	10%	4	\$ 2.31	19	\$ 10.17	0.204	\$ 98.00	\$ 19.99	\$ 87.96	\$	98.14
199		16" W x 10" D Rectangular Duct	LF	81	10%	89	\$ 4.26	406	\$ 379.43	0.376	\$ 98.00	\$ 36.82	\$ 3,280.97	\$	3,660.41
200		16" W x 12" D Rectangular Duct	LF	94	10%	103	\$ 4.59	508	\$ 474.61	0.405	\$ 98.00	\$ 39.69	\$ 4,103.95	\$	4,578.55
201		16" W x 14" D Rectangular Duct	LF	13	10%	14	\$ 4.91	76	\$ 70.26	0.434	\$ 98.00	\$ 42.48	\$ 607.51	\$	677.76
202		18" W x 8" D Rectangular Duct	LF	13	10%	14	\$ 4.91	66	\$ 70.26	0.434	\$ 98.00	\$ 42.48	\$ 607.51	\$	677.76
203		18" W x 10" D Rectangular Duct	LF	69	10%	76	\$ 4.91	373	\$ 372.90	0.434	\$ 98.00	\$ 42.48	\$ 3,224.46	\$	3,597.36
204		18" W x 12" D Rectangular Duct	LF	78	10%	86	\$ 4.91	451	\$ 421.54	0.434	\$ 98.00	\$ 42.48	\$ 3,645.04	\$	4,066.58
205		18" W x 14" D Rectangular Duct	LF	13	10%	14	\$ 5.24	81	\$ 75.00	0.465	\$ 98.00	\$ 45.57	\$ 648.50	\$	723.49
206		20" W x 10" D Rectangular Duct	LF	120	10%	132	\$ 5.57	694	\$ 734.91	0.491	\$ 98.00	\$ 48.14	\$ 6,354.81	\$	7,089.72
207		20" W x 12" D Rectangular Duct	LF	98	10%	108	\$ 5.57	605	\$ 600.18	0.491	\$ 98.00	\$ 48.14	\$ 5,189.76	\$	5,789.94
208		22" W x 12" D Rectangular Duct	LF	82	10%	90	\$ 6.22	538	\$ 561.22	0.549	\$ 98.00	\$ 53.80	\$ 4,852.94	\$	5,414.16
209		22" W x 14" D Rectangular Duct	LF	46	10%	51	\$ 6.50	320	\$ 329.03	0.574	\$ 98.00	\$ 56.23	\$ 2,845.11	\$	3,174.14
210		24" W x 14" D Rectangular Duct	LF	15	10%	17	\$ 6.50	110	\$ 107.29	0.574	\$ 98.00	\$ 56.23	\$ 927.75	\$	1,035.05
211		24" W x 12" D Rectangular Duct	LF	14	10%	15	\$ 6.85	98	\$ 105.49	0.598	\$ 98.00	\$ 58.60	\$ 902.50	\$	1,007.99
212		26" W x 8" D Rectangular Duct	LF	24	10%	26	\$ 6.22	158	\$ 164.21	0.607	\$ 98.00	\$ 59.49	\$ 1,570.43	\$	1,734.64
213		26" W x 14" D Rectangular Duct	LF	16	10%	18	\$ 7.53	124	\$ 132.53	0.601	\$ 98.00	\$ 58.90	\$ 1,036.60	\$	1,169.13
214		28" W x 12" D Rectangular Duct	LF												

Bietail		
Projected Cost		\$ 2,349,251
Insurance	3%	\$ 70,478
Contingency	5%	\$ 117,463
Overhead & Profit	15%	\$ 352,388
Tax	6.00%	\$ 64,365
Suggest Bid		\$ 2,953,943

Project:	*****
Location:	***** Lexington Avenue New York, NY 10017
Scope of Work:	HVAC - Ducting
Date:	3/27/2024

Item #	Ref. Sheet	Item Description	Unit	Quantity	Wastage	Quantity w/ Wastage	Unit Material Cost	Weight / Lbs.	Total Material Cost	Unit Manhour	Hourly Wage	Unit Labor Cost	Total Labor Cost	Sub Cost	Total Trade Cost
237		Transition	EA	120	0%	120	\$ 125.62		\$ 15,074.40	1.380	\$ 98.00	\$ 135.24	\$ 16,228.80	\$ 31,303.20	
		<b>15th Floor</b>													
		<b>Rectangular Ducts</b>													
238		(5" W x 4" D) Rectangular Duct	LF	27	10%	30	\$ 2.20	47	\$ 65.34	0.185	\$ 98.00	\$ 18.13	\$ 538.46	\$ 603.80	
239		(6" W x 6" D) Rectangular Duct	LF	557	10%	613	\$ 1.54	1288	\$ 942.64	0.136	\$ 98.00	\$ 13.30	\$ 8,151.05	\$ 9,093.69	
240		(8" W x 6" D) Rectangular Duct	LF	547	10%	602	\$ 2.32	1476	\$ 1,395.94	0.175	\$ 98.00	\$ 17.15	\$ 10,319.16	\$ 11,715.10	
241		(8" W x 8" D) Rectangular Duct	LF	133	10%	146	\$ 2.85	410	\$ 416.96	0.198	\$ 98.00	\$ 19.40	\$ 2,838.81	\$ 3,255.76	
242		(10" W x 10" D) Rectangular Duct	LF	88	10%	97	\$ 2.57	340	\$ 248.49	0.227	\$ 98.00	\$ 22.20	\$ 2,148.67	\$ 2,397.16	
243		(10" W x 8" D) Rectangular Duct	LF	170	10%	187	\$ 2.31	590	\$ 432.34	0.204	\$ 98.00	\$ 19.99	\$ 3,738.50	\$ 4,170.85	
244		(12" W x 6" D) Rectangular Duct	LF	5	10%	6	\$ 2.82	18	\$ 15.52	0.249	\$ 98.00	\$ 24.40	\$ 134.21	\$ 149.73	
245		(12" W x 10" D) Rectangular Duct	LF	322	10%	354	\$ 2.82	1365	\$ 999.55	0.249	\$ 98.00	\$ 24.40	\$ 8,643.19	\$ 9,642.74	
246		(12" W x 12" D) Rectangular Duct	LF	21	10%	23	\$ 3.08	98	\$ 71.08	0.272	\$ 98.00	\$ 26.61	\$ 614.62	\$ 685.70	
247		(12" W x 8" D) Rectangular Duct	LF	17	10%	19	\$ 2.82	66	\$ 52.77	0.249	\$ 98.00	\$ 24.40	\$ 456.32	\$ 509.09	
248		(14" W x 12" D) Rectangular Duct	LF	160	10%	176	\$ 4.10	802	\$ 721.60	0.376	\$ 98.00	\$ 36.85	\$ 6,485.25	\$ 7,206.85	
249		(14" W x 10" D) Rectangular Duct	LF	65	10%	72	\$ 4.02	301	\$ 287.43	0.352	\$ 98.00	\$ 34.50	\$ 2,466.46	\$ 2,753.89	
250		(14" W x 14" D) Rectangular Duct	LF	33	10%	36	\$ 4.59	179	\$ 166.62	0.405	\$ 98.00	\$ 39.69	\$ 1,440.75	\$ 1,607.36	
251		(16" W x 8" D) Rectangular Duct	LF	4	10%	4	\$ 2.31	19	\$ 10.17	0.204	\$ 98.00	\$ 19.99	\$ 87.96	\$ 98.14	
252		(16" W x 10" D) Rectangular Duct	LF	80	10%	88	\$ 4.26	401	\$ 374.75	0.376	\$ 98.00	\$ 36.82	\$ 3,240.47	\$ 3,615.22	
253		(16" W x 12" D) Rectangular Duct	LF	90	10%	99	\$ 4.59	486	\$ 454.41	0.405	\$ 98.00	\$ 39.69	\$ 3,929.31	\$ 4,383.72	
254		(16" W x 14" D) Rectangular Duct	LF	13	10%	14	\$ 4.91	76	\$ 70.26	0.434	\$ 98.00	\$ 42.48	\$ 607.51	\$ 677.76	
255		(18" W x 8" D) Rectangular Duct	LF	13	10%	14	\$ 4.91	66	\$ 70.26	0.434	\$ 98.00	\$ 42.48	\$ 607.51	\$ 677.76	
256		(18" W x 10" D) Rectangular Duct	LF	49	10%	54	\$ 4.91	265	\$ 264.81	0.434	\$ 98.00	\$ 42.48	\$ 2,289.83	\$ 2,554.64	
257		(18" W x 12" D) Rectangular Duct	LF	78	10%	86	\$ 4.91	451	\$ 421.54	0.434	\$ 98.00	\$ 42.48	\$ 3,645.04	\$ 4,066.58	
258		(18" W x 14" D) Rectangular Duct	LF	13	10%	14	\$ 5.24	81	\$ 75.00	0.463	\$ 98.00	\$ 45.35	\$ 645.50	\$ 723.49	
259		(20" W x 10" D) Rectangular Duct	LF	93	10%	102	\$ 5.57	538	\$ 569.56	0.491	\$ 98.00	\$ 48.14	\$ 4,924.98	\$ 5,494.53	
260		(20" W x 12" D) Rectangular Duct	LF	83	10%	91	\$ 5.57	512	\$ 508.31	0.491	\$ 98.00	\$ 48.14	\$ 4,395.41	\$ 4,903.72	
261		(22" W x 12" D) Rectangular Duct	LF	82	10%	90	\$ 6.22	538	\$ 561.22	0.549	\$ 98.00	\$ 53.80	\$ 4,852.94	\$ 5,414.16	
262		(22" W x 14" D) Rectangular Duct	LF	46	10%	51	\$ 6.50	320	\$ 329.03	0.574	\$ 98.00	\$ 56.23	\$ 2,841.11	\$ 3,174.14	
263		(24" W x 12" D) Rectangular Duct	LF	14	10%	15	\$ 6.85	98	\$ 105.49	0.598	\$ 98.00	\$ 58.60	\$ 902.50	\$ 1,007.99	
264		(24" W x 14" D) Rectangular Duct	LF	14	10%	15	\$ 6.50	103	\$ 100.14	0.574	\$ 98.00	\$ 56.23	\$ 865.90	\$ 966.04	
265		(26" W x 8" D) Rectangular Duct	LF	24	10%	26	\$ 6.22	158	\$ 164.21	0.607	\$ 98.00	\$ 59.49	\$ 1,570.43	\$ 1,734.64	
266		(26" W x 14" D) Rectangular Duct	LF	16	10%	18	\$ 7.53	124	\$ 132.53	0.601	\$ 98.00	\$ 58.90	\$ 1,036.60	\$ 1,169.13	
267		(28" W x 12" D) Rectangular Duct	LF	5	10%	6	\$ 9.18	39	\$ 50.49	0.710	\$ 98.00	\$ 69.58	\$ 382.69	\$ 433.18	
268		(28" W x 14" D) Rectangular Duct	LF	26	10%	29	\$ 9.18	211	\$ 262.55	0.810	\$ 98.00	\$ 79.38	\$ 2,270.27	\$ 2,532.82	
269		(28" W x 16" D) Rectangular Duct	LF	11	10%	12	\$ 9.18	94	\$ 111.08	0.710	\$ 98.00	\$ 69.58	\$ 841.92	\$ 953.00	
270		(28" W x 18" D) Rectangular Duct	LF	36	10%	40	\$ 9.18	320	\$ 363.53	0.710	\$ 98.00	\$ 69.58	\$ 2,755.37	\$ 3,118.90	
271		(30" W x 14" D) Rectangular Duct	LF	32	10%	35	\$ 9.12	272	\$ 321.02	0.578	\$ 98.00	\$ 56.64	\$ 1,993.87	\$ 2,314.89	
272		(30" W x 12" D) Rectangular Duct	LF	23	10%	25	\$ 9.12	187	\$ 230.74	0.578	\$ 98.00	\$ 56.64	\$ 1,433.09	\$ 1,663.83	
273		(30" W x 16" D) Rectangular Duct	LF	31	10%	34	\$ 9.12	275	\$ 310.99	0.578	\$ 98.00	\$ 56.64	\$ 1,931.56	\$ 2,242.55	
274		(32" W x 14" D) Rectangular Duct	LF	20	10%	22	\$ 8.50	178	\$ 187.00	0.750	\$ 98.00	\$ 73.50	\$ 1,617.00	\$ 1,804.00	
275		(32" W x 18" D) Rectangular Duct	LF	14	10%	15	\$ 8.50	135	\$ 130.90	0.750	\$ 98.00	\$ 73.50	\$ 1,131.90	\$ 1,262.80	
276		(34" W x 18" D) Rectangular Duct	LF	8	10%	9	\$ 8.50	81	\$ 74.80	0.750	\$ 98.00	\$ 73.50	\$ 646.80	\$ 721.60	
277		(34" W x 16" D) Rectangular Duct	LF	35	10%	39	\$ 8.50	338	\$ 327.25	0.750	\$ 98.00	\$ 73.50	\$ 2,829.75	\$ 3,157.00	
278		(36" W x 12" D) Rectangular Duct	LF	13	10%	14	\$ 8.50	121	\$ 121.55	0.750	\$ 98.00	\$ 73.50	\$ 1,051.05	\$ 1,172.60	
279		(36" W x 14" D) Rectangular Duct	LF	35	10%	39	\$ 8.50	338	\$ 327.25	0.750	\$ 98.00	\$ 73.50	\$ 2,829.75	\$ 3,157.00	
280		(42" W x 18" D) Rectangular Duct	LF	7	10%	8	\$ 12.40	81	\$ 95.48	0.912	\$ 98.00	\$ 89.38	\$ 688.20	\$ 783.68	
281		(46" W x 18" D) Rectangular Duct	LF	10	10%	11	\$ 12.40	124	\$ 136.40	0.912	\$ 98.00	\$ 89.38	\$ 983.14	\$ 1,119.54	
282		(56" W x 20" D) Rectangular Duct	LF	22	10%	24	\$ 13.40	323	\$ 324.28	0.300	\$ 98.00	\$ 29.40	\$ 711.48	\$ 1,035.76	
283		(56" W x 18" D) Rectangular Duct	LF	13	10%	14	\$ 13.40	186	\$ 191.62	0.300	\$ 98.00	\$ 29.40	\$ 420.42	\$ 612.04	
284		(14" W x 6" D) Rectangular Duct	LF	12	10%	13	\$ 4.10	47	\$ 54.12	0.376	\$ 98.00	\$ 36.85	\$ 486.39	\$ 540.51	
		<b>Flexible Duct</b>													
285		(6" Dia) Flexible Duct	LF	71	10%	78	\$ 3.02	-	\$ 235.86	0.045	\$ 98.00	\$ 4.41	\$ 344.42	\$ 580.28	
286		(8" Dia) Flexible Duct	LF	93	10%	102	\$ 3.85	-	\$ 393.86	0.048	\$ 98.00	\$ 4.70	\$ 481.22	\$ 875.07	
287		(10" Dia) Flexible Duct	LF	269	10%	296	\$ 4.85	-	\$ 1,435.12	0.035	\$ 98.00	\$ 3.43	\$ 1,014.94	\$ 2,450.05	
		<b>Connection</b>													
288		Tee	EA	188	0%	188	\$ 108.62		\$ 20,420.56	1.200	\$ 98.00	\$ 117.60	\$ 22,108.80	\$ 42,529.36	
289		Radius Elbow	EA	146	0%	146	\$ 85.66		\$ 12,506.65	0.985	\$ 98.00	\$ 96.53	\$ 14,093.38	\$ 26,600.03	
290		Transition	EA	126	0%	126	\$ 125.62		\$ 15,828.12	1.380	\$ 98.00	\$ 135.24	\$ 17,040.24	\$ 32,868.36	
		<b>HVAC Fixtures</b>													
291		<b>8th Floor</b>													
292		Fire Smoke Detector	EA	26	0%	26	\$ 185.62	-	\$ 4,826.12	0.752	\$ 98.00	\$ 73.70	\$ 1,916.10	\$ 6,742.22	
293		(30"x30") Ceiling Diffuser	EA	4	0%	4	\$ 125.62	-	\$ 502.48	0.600	\$ 98.00	\$ 58.80	\$ 235.20	\$ 737.68	
294		(24"x24") Ceiling Diffuser	EA	13	0%	13	\$ 109.65	-	\$ 1,425.45	0.525	\$ 98.00	\$ 51.45	\$ 668.85	\$ 2,094.30	
295		(12"x12") Ceiling Diffuser	EA	12	0%	12	\$ 75.95	-	\$ 911.40	0.452	\$ 98.00	\$ 44.30	\$ 531.55	\$ 1,442.95	
296		(24"x24") Exhaust Register	EA	2	0%	2	\$ 109.65	-	\$ 219.30	0.525	\$ 98.00	\$ 51.45	\$ 102.90	\$ 322.20	
297		(12"x12") Exhaust Register	EA	6	0%	6	\$ 75.95	-	\$ 455.70	0.452	\$ 98.00	\$ 44.30	\$ 265.78	\$ 721.48	
298		Fan Power Terminal Unit Inlet Size: (16"Dia)	EA	26	0%	26	\$ 258.00	-	\$ 6,708.00	2.320	\$ 98.00	\$ 227.36	\$ 5,911.36	\$ 12,619.36	
299		Fan Power Terminal Unit Inlet Size: (12"Dia)	EA	16	0%	16	\$ 210.00	-	\$ 3,360.00	1.980	\$ 98.00	\$ 194.04	\$ 3,104.64	\$ 6,464.64	
300		Supple Mental AC Unit Model: T24SHC-4	EA	2	0%	2	\$ 4,215.00	-	\$ 8,430.00	4.250	\$ 98.00	\$ 416.50	\$ 833.00	\$ 9,263.00	
301		(20"x20") Door Access Exhaust Fan (CFM250)	EA	38	0%	38	\$ 198.00	-	\$ 7,524.00	1.200	\$ 98.00	\$ 117.60	\$ 4,468.80	\$ 11,992.80	
302		Manuf: GREENHECK Model: SQ-90	EA	1	0%	1	\$ 1,058.00	-	\$ 1,058.00	2.000					

BuildingSummary	
Project:	*****
Location:	***** Lexington Avenue New York, NY 10017
Scope of Work:	HVAC - Ducting
Date:	3/27/2024

Bietail	
Projected Cost	\$ 2,349,251
Insurance	3% \$ 70,478
Contingency	5% \$ 117,463
Overhead & Profit	15% \$ 352,388
Tax	6.00% \$ 64,365
Suggest Bid	\$ 2,953,943

Item #	Ref. Sheet	Item Description	Unit	Quantity	Wastage	Quantity w/ Wastage	Unit Material Cost	Weight / Lbs.	Total Material Cost	Unit Manhour	Hourly Wage	Unit Labor Cost	Total Labor Cost	Sub Cost	Total Trade Cost
314		<b>10th Floor</b>													
315		Fire Smoke Detector	EA	17	0%	17	\$ 185.62	-	\$ 3,155.54	0.752	\$ 98.00	\$ 73.70	\$ 1,252.83	\$ 4,408.37	
316		Temperature Sensor	EA	28	0%	28	\$ 75.60	-	\$ 2,116.80	0.485	\$ 98.00	\$ 47.53	\$ 1,330.84	\$ 3,447.64	
317		Temperature Sensor/ CO2Sensor	EA	14	0%	14	\$ 125.62	-	\$ 1,758.68	0.520	\$ 98.00	\$ 50.96	\$ 713.44	\$ 2,472.12	
318		Drain Pan/Leak Detection	SF	70	0%	70	\$ 15.20	-	\$ 1,064.00	1.250	\$ 98.00	\$ 122.50	\$ 8,575.00	\$ 9,639.00	
319		Volume Damper	EA	83	0%	83	\$ 120.25	-	\$ 9,980.75	0.565	\$ 98.00	\$ 55.37	\$ 4,595.71	\$ 14,576.46	
320		Cable Operator Damper	EA	164	0%	164	\$ 145.25	-	\$ 23,821.00	0.850	\$ 98.00	\$ 83.30	\$ 13,661.20	\$ 37,482.20	
321		Condensate Pump Manuf:LITTLEGDiaNT Model:VCM-20ULS	EA	2	0%	2	\$ 98.65	-	\$ 197.30	0.620	\$ 98.00	\$ 60.76	\$ 121.52	\$ 318.82	
322		(20"x20") Door Access	EA	42	0%	42	\$ 198.00	-	\$ 8,316.00	1.200	\$ 98.00	\$ 117.60	\$ 4,939.20	\$ 13,255.20	
323		(24"x24") Ceiling Diffuser	EA	25	0%	25	\$ 109.65	-	\$ 2,741.25	0.525	\$ 98.00	\$ 51.45	\$ 1,286.25	\$ 4,027.50	
324		(30"x30") Ceiling Diffuser	EA	1	0%	1	\$ 125.62	-	\$ 125.62	0.600	\$ 98.00	\$ 58.80	\$ 58.80	\$ 184.42	
325		(12"x12") Ceiling Diffuser	EA	4	0%	4	\$ 75.95	-	\$ 303.80	0.452	\$ 98.00	\$ 44.30	\$ 177.18	\$ 480.98	
326		(12"x12") Exhaust Register	EA	10	0%	10	\$ 75.95	-	\$ 759.50	0.452	\$ 98.00	\$ 44.30	\$ 442.96	\$ 1,202.46	
327		(24"x24") Exhaust Register	EA	1	0%	1	\$ 109.65	-	\$ 109.65	0.525	\$ 98.00	\$ 51.45	\$ 51.45	\$ 161.10	
328		Fan Power Terminal Unit Inlet Size: (16"Dia)	EA	23	0%	23	\$ 258.00	-	\$ 5,934.00	2.320	\$ 98.00	\$ 227.36	\$ 5,229.28	\$ 11,163.28	
329		Fan Power Terminal Unit Inlet Size: (12"Dia)	EA	16	0%	16	\$ 210.00	-	\$ 3,360.00	1.980	\$ 98.00	\$ 194.04	\$ 3,104.64	\$ 6,464.64	
330		Supple Mental AC Unit Model: T24SHC-4	EA	2	0%	2	\$ 4,215.00	-	\$ 8,430.00	4.250	\$ 98.00	\$ 416.50	\$ 833.00	\$ 9,263.00	
331		Exhaust Fan (CFM200) Manuf: GREENHECK Model: SQ-80	EA	1	0%	1	\$ 2,119.85	-	\$ 2,119.85	2.350	\$ 98.00	\$ 230.30	\$ 230.30	\$ 2,350.15	
332		(2'-0"Long)Linear Diffuser/(10"x8") w/ Plenum Box Model:FL-10 CFM:50-150	EA	3	0%	3	\$ 158.65	-	\$ 475.95	0.952	\$ 98.00	\$ 93.30	\$ 279.89	\$ 755.84	
333		(3'-0"Long)Linear Diffuser/(12"x8") w/ Plenum Box Model:FL-10 CFM:151-225	EA	16	0%	16	\$ 198.62	-	\$ 3,177.92	1.350	\$ 98.00	\$ 132.30	\$ 2,116.80	\$ 5,294.72	
334		(4'-0"Long)Linear Diffuser/(12"x8") w/ Plenum Box Model:FL-10 CFM:225-300	EA	50	0%	50	\$ 215.32	-	\$ 10,766.00	1.480	\$ 98.00	\$ 145.04	\$ 7,252.00	\$ 18,018.00	
335		(2'-0"Long)Linear Diffuser/(10"x8") w/ Plenum Box Model:FL-10 CFM:50-150	EA	23	0%	23	\$ 158.65	-	\$ 3,648.95	0.952	\$ 98.00	\$ 93.30	\$ 2,145.81	\$ 5,794.76	
336		(4'-0"Long)Linear Diffuser/(12"x10") w/ Plenum Box Model:FL-10 CFM:225-300	EA	56	0%	56	\$ 215.32	-	\$ 12,057.92	1.480	\$ 98.00	\$ 145.04	\$ 8,122.24	\$ 20,180.16	
337		(3'-0"Long)Linear Diffuser/(12"x8") w/ Plenum Box Model:FL-10 CFM:151-225	EA	16	0%	16	\$ 198.62	-	\$ 3,177.92	1.350	\$ 98.00	\$ 132.30	\$ 2,116.80	\$ 5,294.72	
338		Cable Operator Damper	EA	164	0%	164	\$ 145.25	-	\$ 23,821.00	0.850	\$ 98.00	\$ 83.30	\$ 13,661.20	\$ 37,482.20	
339		<b>13th Floor</b>													
340		Fire Smoke Detector	EA	9	0%	9	\$ 185.62	-	\$ 1,670.58	0.752	\$ 98.00	\$ 73.70	\$ 663.26	\$ 2,333.84	
341		Fan Power Terminal Unit Inlet Size: (16"Dia)	EA	18	0%	18	\$ 258.00	-	\$ 4,644.00	2.320	\$ 98.00	\$ 227.36	\$ 4,092.48	\$ 8,736.48	
342		Fan Power Terminal Unit Inlet Size: (12"Dia)	EA	9	0%	9	\$ 210.00	-	\$ 1,890.00	1.980	\$ 98.00	\$ 194.04	\$ 1,746.36	\$ 3,636.36	
343		Supple Mental AC Unit Model: HPY06 CFM: 600	EA	2	0%	2	\$ 4,215.00	-	\$ 8,430.00	4.250	\$ 98.00	\$ 416.50	\$ 833.00	\$ 9,263.00	
344		Supple Mental AC Unit Model: HPY10 CFM: 1000	EA	1	0%	1	\$ 4,215.00	-	\$ 4,215.00	4.250	\$ 98.00	\$ 416.50	\$ 416.50	\$ 4,631.50	
345		(2'-0"Long)Linear Diffuser/(10"x8") w/ Plenum Box Model:FL-10 CFM:50-150	EA	31	0%	31	\$ 158.65	-	\$ 4,918.15	0.952	\$ 98.00	\$ 93.30	\$ 2,892.18	\$ 7,810.33	
346		(3'-0"Long)Linear Diffuser/(12"x8") w/ Plenum Box Model:FL-10 CFM:151-225	EA	65	0%	65	\$ 198.62	-	\$ 12,910.30	1.350	\$ 98.00	\$ 132.30	\$ 8,599.50	\$ 21,509.80	
347		(4'-0"Long)Linear Diffuser/(12"x10") w/ Plenum Box Model:FL-10 CFM:225-300	EA	2	0%	2	\$ 215.32	-	\$ 430.64	1.480	\$ 98.00	\$ 145.04	\$ 290.08	\$ 720.72	
348		(2'-0"Long)Linear Diffuser/(10"x8") w/ Plenum Box Model:FL-10 CFM:50-150	EA	28	0%	28	\$ 158.65	-	\$ 4,442.20	0.952	\$ 98.00	\$ 93.30	\$ 2,612.29	\$ 7,054.49	
349		(4'-0"Long)Linear Diffuser/(12"x10") w/ Plenum Box Model:FL-10 CFM:151-300	EA	13	0%	13	\$ 215.32	-	\$ 2,799.16	1.480	\$ 98.00	\$ 145.04	\$ 1,885.52	\$ 4,684.68	
350		(24x24) Square Diffuser Manf:TITUS Model:OMNI	EA	41	0%	41	\$ 109.65	-	\$ 4,495.65	0.525	\$ 98.00	\$ 51.45	\$ 2,109.45	\$ 6,605.10	
351		(20"x20") Door Access	EA	33	0%	33	\$ 198.00	-	\$ 6,534.00	1.200	\$ 98.00	\$ 117.60	\$ 3,880.80	\$ 10,414.80	
352		Condensate Pump Manuf:LITTLEGDiaNT Model:VCM-20ULS	EA	2	0%	2	\$ 98.65	-	\$ 197.30	0.620	\$ 98.00	\$ 60.76	\$ 121.52	\$ 318.82	
353		Temperature Sensor	EA	42	0%	42	\$ 75.60	-	\$ 3,175.20	0.485	\$ 98.00	\$ 47.53	\$ 1,996.26	\$ 5,171.46	
354		Drain Pan / Leak Detection	SF	70	0%	70	\$ 15.20	-	\$ 1,064.00	0.985	\$ 98.00	\$ 96.53	\$ 6,751.10	\$ 7,821.10	
355		Temperature Sensor/ CO2 Sensor	EA	2	0%	2	\$ 125.62	-	\$ 251.24	0.520	\$ 98.00	\$ 50.96	\$ 101.92	\$ 353.16	
356		Cable Operator Damper	EA	164	0%	164	\$ 145.25	-	\$ 23,821.00	0.850	\$ 98.00	\$ 83.30	\$ 13,661.20	\$ 37,482.20	
357		<b>14th Floor</b>													
358		Fire Smoke Detector	EA	9	0%	9	\$ 185.62	-	\$ 1,670.58	0.752	\$ 98.00	\$ 73.70	\$ 663.26	\$ 2,333.84	
359		Fan Power Terminal Unit Inlet Size: (12"Dia)	EA	10	0%	10	\$ 210.00	-	\$ 2,100.00	1.980	\$ 98.00	\$ 194.04	\$ 1,940.40	\$ 4,040.40	
360		Fan Power Terminal Unit Inlet Size: (16"Dia)	EA	18	0%	18	\$ 258.00	-	\$ 4,644.00	2.320	\$ 98.00	\$ 227.36	\$ 4,092.48	\$ 8,736.48	
361		Supple Mental AC Unit Model: HYP10 CFM: 1000	EA	5	0%	5	\$ 4,215.00	-	\$ 21,075.00	4.250	\$ 98.00	\$ 416.50	\$ 2,082.50	\$ 23,157.50	
362		(2'-0"Long)Linear Diffuser w/ (10"x8")Plenum Box Model:FL-10 CFM:50-150	EA	37	0%	37	\$ 158.65	-	\$ 5,870.05	0.952	\$ 98.00	\$ 93.30	\$ 3,451.95	\$ 9,322.00	
363		(3'-0"Long)Linear Diffuser w/ (12"x8")Plenum Box Model:FL-10 CFM:151-225	EA	63	0%	63	\$ 198.62	-	\$ 12,513.06	1.350	\$ 98.00	\$ 132.30	\$ 8,334.90	\$ 20,847.96	
364		(4'-0"Long)Linear Diffuser w/ (12"x10")Plenum Box Model:FL-10 CFM:225-300	EA	4	0%	4	\$ 215.32	-	\$ 861.28	1.480	\$ 98.00	\$ 145.04	\$ 580.16	\$ 1,441.44	
365		(2'-0"Long)Linear Diffuser w/ (10"x8")Plenum Box Model:FL-10 CFM:50-150	EA	15	0%	15	\$ 158.65	-	\$ 2,379.75	0.952	\$ 98.00	\$ 93.30	\$ 1,399.44	\$ 3,779.19	
366		(4'-0"Long)Linear Diffuser w/ (12"x10")Plenum Box Model:FL-10 CFM:151-300	EA	30	0%	30	\$ 215.32	-	\$ 6,459.60	1.480	\$ 98.00	\$ 145.04	\$ 4,351.20	\$ 10,810.80	
367		(24x24)Square Diffuser Manf:TITUS Model:OMNI	EA	34	0%	34	\$ 109.65	-	\$ 3,728.10	0.525	\$ 98.00	\$ 51.45	\$ 1,749.30	\$ 5,477.40	
368		(20"x20") Door Access	EA	38	0%	38	\$ 198.00	-	\$ 7,524.00	1.200	\$ 98.00	\$ 117.60	\$ 4,468.80	\$ 11,992.80	
369		Condensate Pump Manuf:LITTLEGDiaNT Model:VCM-20ULS	EA	5	0%	5	\$ 98.65	-	\$ 493.25	0.620	\$ 98.00	\$ 60.76	\$ 303.80	\$ 797.05	
370		Drain Pan / Leak Detection	SF	115	0%	115	\$ 15.20	-	\$ 1,748.00	0.985	\$ 98.00	\$ 96.53	\$ 11,100.95	\$ 12,848.95	
371		Temperature Sensor/ CO2 Sensor	EA	4	0%	4	\$ 125.62	-	\$ 502.48	0.520	\$ 98.00	\$ 50.96	\$ 203.84	\$ 706.32	
372		Temperature Sensor	EA	52	0%	52	\$ 75.60	-	\$ 3,931.20	0.485	\$ 98.00	\$ 47.53	\$ 2,471.56	\$ 6,402.76	
373		Water Detector	EA	1	0%	1	\$ 128.65	-	\$ 128.65	0.485	\$ 98.00	\$ 47.53	\$ 47.53	\$ 176.18	
374		Cable Operator Damper	EA	149	0%	149	\$ 145.25	-	\$ 21,642.25	0.850	\$ 98.00	\$ 83.30	\$ 12,411.70	\$ 34,053.95	

Building Summary	
Project:	*****
Location:	***** Lexington Avenue New York, NY 10017
Scope of Work:	HVAC - Ducting
Date:	3/27/2024

Bietail	
Projected Cost	\$ 2,349,251
Insurance	3% \$ 70,478
Contingency	5% \$ 117,463
Overhead & Profit	15% \$ 352,388
Tax	6.00% \$ 64,365
Suggest Bid	\$ 2,953,943

Item #	Ref. Sheet	Item Description	Unit	Quantity	Wastage	Quantity w/ Wastage	Unit Material Cost	Weight / Lbs.	Total Material Cost	Unit Manhour	Hourly Wage	Unit Labor Cost	Total Labor Cost	Sub Cost	Total Trade Cost
375		<b>15th Floor</b>													
376		Fire Smoke Detector	EA	9	0%	9	\$ 185.62	-	\$ 1,670.58	0.752	\$ 98.00	\$ 73.70	\$ 663.26	\$ 2,333.84	
377		(2'-0") Linear Diffuser w/ (10"x8") Plenum Box Model: FL-10 CFM: 50-150	EA	37	0%	37	\$ 158.65	-	\$ 5,870.05	0.952	\$ 98.00	\$ 93.30	\$ 3,451.95	\$ 9,322.00	
378		(3'-0") Linear Diffuser w/ (12"x8") Plenum Box Model: FL-10 CFM: 151-225	EA	62	0%	62	\$ 198.62	-	\$ 12,314.44	1.350	\$ 98.00	\$ 132.30	\$ 8,202.60	\$ 20,517.04	
379		(4'-0") Linear Diffuser w/ (12"x10") Plenum Box Model: FL-10 CFM: 225-300	EA	4	0%	4	\$ 215.32	-	\$ 861.28	1.480	\$ 98.00	\$ 145.04	\$ 580.16	\$ 1,441.44	
380		(2'-0") Linear Diffuser w/ (10"x8") Plenum Box Model: FL-10 CFM: 50-150	EA	15	0%	15	\$ 158.65	-	\$ 2,379.75	0.952	\$ 98.00	\$ 93.30	\$ 1,399.44	\$ 3,779.19	
381		(4'-0") Linear Diffuser w/ (12"x10") Plenum Box Model: FL-10 CFM: 151-300	EA	35	0%	35	\$ 215.32	-	\$ 7,536.20	1.480	\$ 98.00	\$ 145.04	\$ 5,076.40	\$ 12,612.60	
382		(24x24) Square Diffuser Manf: TITUS Model: OMNI	EA	34	0%	34	\$ 109.65	-	\$ 3,728.10	0.525	\$ 98.00	\$ 51.45	\$ 1,749.30	\$ 5,477.40	
383		Supple Mental AC Unit Model: HYP10 CFM: 1000	EA	3	0%	3	\$ 4,215.00	-	\$ 12,645.00	4.250	\$ 98.00	\$ 416.50	\$ 1,249.50	\$ 13,894.50	
384		Supple Mental AC Unit Model: HYP10 CFM: 1200	EA	1	0%	1	\$ 4,215.00	-	\$ 4,215.00	4.250	\$ 98.00	\$ 416.50	\$ 416.50	\$ 4,631.50	
385		Supple Mental AC Unit Model: HYP10 CFM: 600	EA	1	0%	1	\$ 4,215.00	-	\$ 4,215.00	4.250	\$ 98.00	\$ 416.50	\$ 416.50	\$ 4,631.50	
386		Supple Mental AC Unit Model: HYP10 CFM: 750	EA	1	0%	1	\$ 4,215.00	-	\$ 4,215.00	4.250	\$ 98.00	\$ 416.50	\$ 416.50	\$ 4,631.50	
387		Fan Power Terminal Unit Inlet Size: (16" Dia)	EA	18	0%	18	\$ 258.00	-	\$ 4,644.00	2.320	\$ 98.00	\$ 227.36	\$ 4,092.48	\$ 8,736.48	
388		Fan Power Terminal Unit Inlet Size: (12" Dia)	EA	10	0%	10	\$ 210.00	-	\$ 2,100.00	1.980	\$ 98.00	\$ 194.04	\$ 1,940.40	\$ 4,040.40	
389		Drain Pan / Leak Detection	SF	130	0%	130	\$ 15.20	-	\$ 1,976.00	0.985	\$ 98.00	\$ 96.53	\$ 12,548.90	\$ 14,524.90	
390		Temperature Sensor / CO2 Sensor	EA	4	0%	4	\$ 125.62	-	\$ 502.48	0.520	\$ 98.00	\$ 50.96	\$ 203.84	\$ 706.32	
391		Temperature Sensor	EA	50	0%	50	\$ 75.60	-	\$ 3,780.00	0.485	\$ 98.00	\$ 47.53	\$ 2,376.50	\$ 6,156.50	
392		(20"x20") Door Access	EA	40	0%	40	\$ 198.00	-	\$ 7,920.00	1.200	\$ 98.00	\$ 117.60	\$ 4,704.00	\$ 12,624.00	
393		Condensate Pump Manuf: LITTLEGDIANT Model: VCM-20ULS	EA	6	0%	6	\$ 98.65	-	\$ 591.90	0.620	\$ 98.00	\$ 60.76	\$ 364.56	\$ 956.46	
394		Cable Operator Damper	EA	153	0%	153	\$ 145.25	-	\$ 22,223.25	0.850	\$ 98.00	\$ 83.30	\$ 12,744.90	\$ 34,968.15	
<b>Subtotal(Electrical)</b>									<b>\$ 919,498</b>				<b>\$ 1,361,702</b>		<b>\$ 2,281,201</b>

Veracity Estimating

BuilingataSummary

Project:	*****
Location:	***** Lexington Avenue New York, NY 10017
Scope of Work:	HVAC - Ducting
Date:	3/27/2024

Bietail		
Projected Cost		\$ 2,349,251
Insurance	3%	\$ 70,478
Contingency	5%	\$ 117,463
Overhead & Profit	15%	\$ 352,388
Tax	6.00%	\$ 64,365
Suggest Bid		\$ 2,953,943

Item #	Ref. Sheet	Item Description	Unit	Quantity	Wastage	Quantity w/ Wastage	Unit Material Cost	Weight / Lbs.	Total Material Cost	Unit Manhour	Hourly Wage	Unit Labor Cost	Total Labor Cost	Sub Cost	Total Trade Cost	
														PROJECT COST	\$ 2,349,251	
														INSURANCE	3%	\$ 70,478
														CONTINGENCY	5%	\$ 117,463
														OVER HEAD & PROFIT	15%	\$ 352,388
														TAX	7.00%	\$ 64,365
														SUGGESTE BID	\$ 2,953,943	

Veracity Estimating





**GENERAL NOTES**

- MECHANICAL CONTRACTOR SHALL PROVIDE NECESSARY SUPPLEMENTARY STEEL MEMBERS FOR THE SUPPORT OF SUSPENDED EQUIPMENT.
- PROVIDE ACCESS DOORS FOR VALVES, VENTS, ETC.
- MECHANICAL CONTRACTOR SHALL PROVIDE ALL NECESSARY WELLS IN A PIPING REQUIRED FOR THE TEMPERATURE CONTROL DEVICES, PRESSURE SENSORS, FLOW METERS, ETC.
- COORDINATE WITH THE ARCHITECT FOR THE EXACT LOCATIONS OF THERMOSTATS.
- PROVIDE VOLUME DAMPER AT EACH BRANCH DUCT & REGISTER AND CABLE OPERATED DAMPER FOR BRANCH DUCT, REGISTER & LINEAR DIFFUSER ABOVE NON-ACCESSIBLE CEILING.
- PROVIDE TRANSFER DUCTS ONLY WHERE THE WALLS GO UP TO SLAB.
- PROVIDE BOTTOM ACCESS TO ALL FAN POWER BOX UNITS.

**REFERENCE NOTES**

- PROVIDE COO AT LINEAR DIFFUSER.
- PROVIDE VD AT SQUARE DIFFUSERS (20x30, 24x24 & 12x12).
- PROVIDE ACCESS CLEARANCE TO ALL FPB AND AC UNITS.
- PROVIDE CLEARANCE FOR MAINTENANCE AND AIRFLOW.
- EXISTING FSD AT BUILDING RISER TAPS ARE TO BE REPLACED WITH NEW FSD.
- PROVIDE FSD AS REQUIRED.
- COORDINATE BEAM PENETRATION WITH STRUCTURAL ENGINEER.

- (8"x6") Rectangular Duct
- (12"x10") Rectangular Duct
- (10"x8") Rectangular Duct
- (8"x8") Rectangular Duct
- (14"x12") Rectangular Duct
- (22"x12") Rectangular Duct
- (48"x12") Rectangular Duct
- (8"x6") Rectangular Duct
- (18"x12") Rectangular Duct
- (18"x14") Rectangular Duct
- (16"x12") Rectangular Duct
- (22"x12") Rectangular Duct
- (6"x6") Rectangular Duct
- (10"x10") Rectangular Duct
- (24"x12") Rectangular Duct
- (28"x12") Rectangular Duct
- (38"x12") Rectangular Duct
- (12"x12") Rectangular Duct
- (16"x14") Rectangular Duct
- (20"x14") Rectangular Duct
- (6"x6") Rectangular Duct
- (32"x30") Rectangular Duct
- (26"x26") Rectangular Duct
- (5"x4") Rectangular Duct
- (18"x14") Rectangular Duct
- (18"x16") Rectangular Duct
- (24"x16") Rectangular Duct
- (26"x20") Rectangular Duct
- (30"x20") Rectangular Duct
- (34"x34") Rectangular Duct
- (34"x34") Rectangular Duct
- (24"x18") Rectangular Duct
- (48"x18") Rectangular Duct
- (42"x24") Rectangular Duct
- (42"x24") Rectangular Duct
- (38"x36") Rectangular Duct
- (38"x36") Rectangular Duct
- (22"x14") Rectangular Duct
- (48"x26") Rectangular Duct
- (24"x18") Rectangular Duct
- (22"x14") Rectangular Duct
- (42"x26") Rectangular Duct
- (34"x20") Rectangular Duct
- (30"x20") Rectangular Duct
- (48"x28") Rectangular Duct
- (48"x28") Rectangular Duct
- (32"x24") Rectangular Duct
- (32"x24") Rectangular Duct
- (54"x24") Rectangular Duct
- (32"x20") Rectangular Duct
- (14"x14") Rectangular Duct
- (54"x24") Rectangular Duct
- (6"x6") Rectangular Duct
- (76"x18") Rectangular Duct
- (58"x18") Rectangular Duct
- (26"x12") Rectangular Duct
- (14"x10") Rectangular Duct
- (30"x12") Rectangular Duct
- (14"x12") Rectangular Duct
- (58"x18") Rectangular Duct
- (20"x16") Rectangular Duct
- (16"x10") Rectangular Duct
- (3'-0" Long) Linear Diffuser W/ (12"x8") Plenum Box
- (4'-0" Long) Linear Diffuser W/ (12"x8") Plenum Box
- (12'-10" Long) Linear Diffuser W/ (12"x10") Plenum Box
- (2'-0" Long) Linear Diffuser W/ (10"x8") Plenum Box
- (2'-0" Long) Linear Diffuser W/ (10"x8") Plenum Box
- Fire Smoke Detector
- (30"x30") Ceiling Diffuser
- (24"x24") Ceiling Diffuser
- (12"x12") Ceiling Diffuser
- (24"x24") Exhaust Register
- (12"x12") Exhaust Register
- (8" Dia) Flexible Duct
- (10" Dia) Flexible Duct
- (6" Dia) Flexible Duct
- (32"x14") Rectangular Duct
- Radius Elbow
- Tee
- Transition
- Fan Power Terminal Unit
- Fan Power Terminal Unit
- AC Unit
- (20"x20") Door Access
- Exhaust Fan (CFM 250)
- Exhaust Fan (CFM 600)
- Condensate Pump

**MECHANICAL UNIT SCHEDULE 8TH FLOOR**

UNIT	MODEL	MSHT	MSHS	GPM	CFM	Comments
1	1800	2.7	1.3			
2	1800	2.7	1.3			
3	1800	2.7	1.3			
4	1800	2.7	1.3			
5	1800	2.7	1.3			
6	1800	2.7	1.3			
7	1800	2.7	1.3			
8	1800	2.7	1.3			
9	1800	2.7	1.3			
10	1800	2.7	1.3			
11	1800	2.7	1.3			
12	1800	2.7	1.3			
13	1800	2.7	1.3			
14	1800	2.7	1.3			
15	1800	2.7	1.3			
16	1800	2.7	1.3			
17	1800	2.7	1.3			
18	1800	2.7	1.3			
19	1800	2.7	1.3			
20	1800	2.7	1.3			
21	1800	2.7	1.3			
22	1800	2.7	1.3			
23	1800	2.7	1.3			
24	1800	2.7	1.3			
25	1800	2.7	1.3			
26	1800	2.7	1.3			
27	1800	2.7	1.3			
28	1800	2.7	1.3			
29	1800	2.7	1.3			
30	1800	2.7	1.3			
31	1800	2.7	1.3			
32	1800	2.7	1.3			
33	1800	2.7	1.3			
34	1800	2.7	1.3			
35	1800	2.7	1.3			
36	1800	2.7	1.3			
37	1800	2.7	1.3			
38	1800	2.7	1.3			
39	1800	2.7	1.3			
40	1800	2.7	1.3			
41	1800	2.7	1.3			
42	1800	2.7	1.3			
43	1800	2.7	1.3			
44	1800	2.7	1.3			
45	1800	2.7	1.3			
46	1800	2.7	1.3			
47	1800	2.7	1.3			
48	1800	2.7	1.3			
49	1800	2.7	1.3			
50	1800	2.7	1.3			
51	1800	2.7	1.3			
52	1800	2.7	1.3			
53	1800	2.7	1.3			
54	1800	2.7	1.3			
55	1800	2.7	1.3			
56	1800	2.7	1.3			
57	1800	2.7	1.3			
58	1800	2.7	1.3			
59	1800	2.7	1.3			
60	1800	2.7	1.3			
61	1800	2.7	1.3			
62	1800	2.7	1.3			
63	1800	2.7	1.3			
64	1800	2.7	1.3			
65	1800	2.7	1.3			
66	1800	2.7	1.3			
67	1800	2.7	1.3			
68	1800	2.7	1.3			
69	1800	2.7	1.3			
70	1800	2.7	1.3			
71	1800	2.7	1.3			
72	1800	2.7	1.3			
73	1800	2.7	1.3			
74	1800	2.7	1.3			
75	1800	2.7	1.3			
76	1800	2.7	1.3			
77	1800	2.7	1.3			
78	1800	2.7	1.3			
79	1800	2.7	1.3			
80	1800	2.7	1.3			
81	1800	2.7	1.3			
82	1800	2.7	1.3			
83	1800	2.7	1.3			
84	1800	2.7	1.3			
85	1800	2.7	1.3			
86	1800	2.7	1.3			
87	1800	2.7	1.3			
88	1800	2.7	1.3			
89	1800	2.7	1.3			
90	1800	2.7	1.3			
91	1800	2.7	1.3			
92	1800	2.7	1.3			
93	1800	2.7	1.3			
94	1800	2.7	1.3			
95	1800	2.7	1.3			
96	1800	2.7	1.3			
97	1800	2.7	1.3			
98	1800	2.7	1.3			
99	1800	2.7	1.3			
100	1800	2.7	1.3			

**Gensler**

1500 Broadway  
New York, NY 10036  
Tel: 212.512.2000  
Fax: 212.512.2001

**FMC Engineering**

200 West 57th Street  
New York, NY 10019  
Tel: 212.512.1100  
Fax: 212.512.1101

**Hammond Consulting Group**

100 West 111th Street  
New York, NY 10035  
Tel: 212.512.1100  
Fax: 212.512.1101

**Tad**

300 South 4th Street  
New York, NY 10014  
Tel: 212.512.1100  
Fax: 212.512.1101

**dbb**

1111 Avenue of the Americas  
New York, NY 10036  
Tel: 212.512.1100  
Fax: 212.512.1101

**RG**

1111 Avenue of the Americas  
New York, NY 10036  
Tel: 212.512.1100  
Fax: 212.512.1101

**Longman Lindsey**

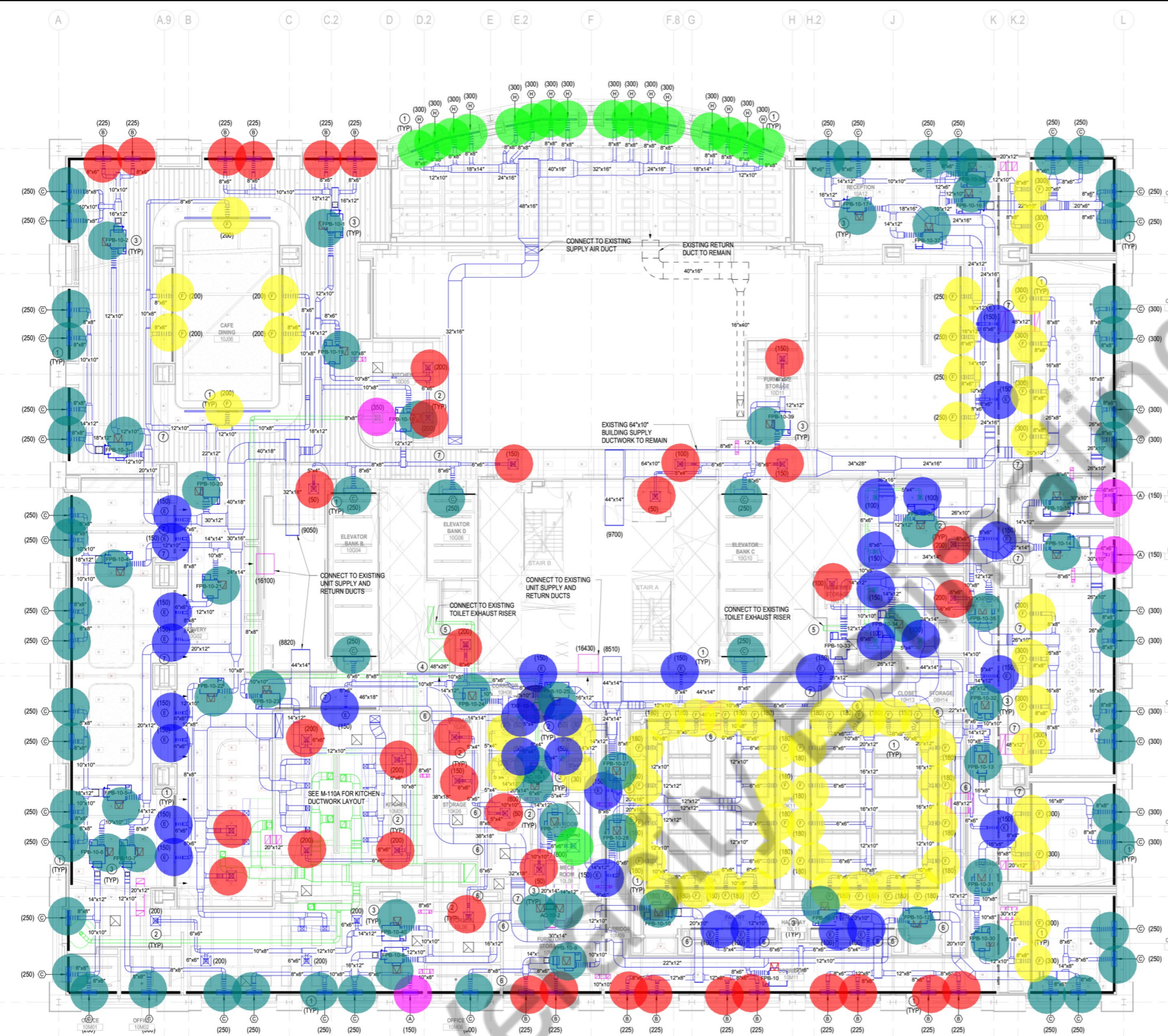
300 West 111th Street  
New York, NY 10035  
Tel: 212.512.1100  
Fax: 212.512.1101

Code	Description	Quantity
1.0	1800	2.7
2.0	1800	2.7
3.0	1800	2.7
4.0	1800	2.7
5.0	1800	2.7
6.0	1800	2.7
7.0	1800	2.7
8.0	1800	2.7
9.0	1800	2.7
10.0	1800	2.7
11.0	1800	2.7
12.0	1800	2.7
13.0	1800	2.7
14.0	1800	2.7
15.0	1800	2.7
16.0	1800	2.7
17.0	1800	2.7
18.0	1800	2.7
19.0	1800	2.7
20.0	1800	2.7
21.0	1800	2.7
22.0	1800	2.7
23.0	1800	2.7
24.0	1800	2.7
25.0	1800	2.7
26.0	1800	2.7
27.0	1800	2.7
28.0	1800	2.7
29.0	1800	2.7
30.0	1800	2.7
31.0	1800	2.7
32.0	1800	2.7
33.0	1800	2.7
34.0	1800	2.7
35.0	1800	2.7
36.0	1800	2.7
37.0	1800	2.7
38.0	1800	2.7
39.0	1800	2.7
40.0	1800	2.7
41.0	1800	2.7
42.0	1800	2.7
43.0	1800	2.7
44.0	1800	2.7
45.0	1800	2.7
46.0	1800	2.7
47.0	1800	2.7
48.0	1800	2.7
49.0	1800	2.7
50.0	1800	2.7
51.0	1800	2.7
52.0	1800	2.7
53.0	1800	2.7
54.0	1800	2.7
55.0	1800	2.7
56.0	1800	2.7
57.0	1800	2.7
58.0	1800	2.7
59.0	1800	2.7
60.0	1800	2.7
61.0	1800	2.7
62.0	1800	2.7
63.0	1800	2.7
64.0	1800	2.7
65.0	1800	2.7
66.0	1800	2.7
67.0	1800	2.7
68.0	1800	2.7
69.0	1800	2.7
70.0	1800	2.7
71.0	1800	2.7
72.0	1800	2.7
73.0	1800	2.7
74.0	1800	2.7
75.0	1800	2.7
76.0	1800	2.7
77.0	1800	2.7
78.0	1800	2.7
79.0	1800	2.7
80.0	1800	2.7
81.0	1800	2.7
82.0	1800	2.7
83.0	1800	2.7
84.0	1800	2.7
85.0	1800	2.7
86.0	1800	2.7
87.0	1800	2.7
88.0	1800	2.7
89.0	1800	2.7
90.0	1800	2.7
91.0	1800	2.7
92.0	1800	2.7
93.0	1800	2.7
94.0	1800	2.7
95.0	1800	2.7
96.0	1800	2.7
97.0	1800	2.7
98.0	1800	2.7
99.0	1800	2.7
100.0	1800	2.7

**M-108.00**

DOB NOW JOB # XX XXXX

DRAWING NO. \_\_\_\_\_ OF \_\_\_\_\_



FAN POWERED TERMINAL UNIT SCHEDULE 10TH FLOOR								
UNIT NAME	INLET DIAMETER	UNIT TYPE	MODEL (DTFS-F)	CFM	GPM	HP	Comments	
F1	16" DIA	B	C	900	1.8	1/3		
F2	16" DIA	B	C	950	1.8	1/3		
F3	16" DIA	B	C	1000	1.8	1/3		
F4	16" DIA	B	C	1000	1.8	1/3		
F5	16" DIA	B	C	1000	1.8	1/3		
F6	16" DIA	B	C	750	1.8	1/3		
F7	12" DIA	A	B	550	1.2	1/3		
F8	16" DIA	B	C	900	1.8	1/3		
F9	16" DIA	B	C	750	1.8	1/3		
F10	16" DIA	B	C	900	1.8	1/3		
F11	16" DIA	B	C	900	1.8	1/3		
F12	16" DIA	B	C	1000	1.8	1/3		
F13	16" DIA	B	C	1000	1.8	1/3		
F14	16" DIA	B	C	1350	2.7	1/2		
F15	16" DIA	B	C	1350	2.7	1/2		
F16	16" DIA	B	C	1000	1.8	1/3		
F17	16" DIA	B	C	1000	1.8	1/3		
F18	12" DIA	A	B	600	1.2	1/3		
F19	16" DIA	B	C	1350	2.7	1/2		
F20	16" DIA	B	C	1000	1.8	1/3		
F21	16" DIA	B	C	1000	1.8	1/3		
F22	12" DIA	E	B	700	1.3	1/3		
F23	12" DIA	E	B	400	1.3	1/3		
F24	16" DIA	G	D	1200	1.2	1/2		
F25	16" DIA	E	B	600	1.3	1/3		
F26	12" DIA	E	B	600	1.3	1/3		
F27	12" DIA	F	C	800	1.3	1/3		
F28	12" DIA	F	C	750	1.3	1/3		
F29	12" DIA	F	C	850	1.3	1/3		
F30	12" DIA	F	C	770	1.3	1/3		
F31	16" DIA	G	D	1440	1.2	1/2		
F32	16" DIA	G	D	1440	1.2	1/2		
F33	12" DIA	E	B	1440	1.3	1/3		
F34	12" DIA	F	C	600	1.3	1/3		
F35	12" DIA	F	C	600	1.3	1/3		
F36	12" DIA	F	C	950	1.3	1/3		
F37	16" DIA	G	D	1440	1.2	1/2		
F38	16" DIA	G	D	1440	1.2	1/2		
F39	16" DIA	G	D	1200	1.2	1/2		
F40	16" DIA	G	D	1300	1.2	1/2		
F41	12" DIA	F	C	600	1.3	1/3		
F42	12" DIA	E	B	700	1.3	1/3		
F43	12" DIA	F	C	800	1.3	1/3		

SUPPLEMENTAL AC UNIT SCHEDULE 10TH FLOOR							
SERVES SPACE	UNIT TYPE	MODEL	MBHT	MBHS	GPM	CFM	Comments
IDF	D	T24SHWC-4	25.0	17.0	5.2	800	
AV ROOM	D	T24SHWC-4	25.0	17.0	5.2	800	

- (4'-0" Long) Linear Diffuser W/ (12" ... 50.0
- (3'-0" Long) Linear Diffuser W/ (12" ... 16.0
- (3'-0" Long) Linear Diffuser W/ (12" ... 16.0
- (4'-0" Long) Linear Diffuser W/ (12" ... 56.0
- (2'-0" Long) Linear Diffuser W/ (10" ... 23.0
- (2'-0" Long) Linear Diffuser W/ (10" ... 3.0
- Fan Power Terminal Unit 23.0
- Fan Power Terminal Unit 16.0
- AC Unit 2.0
- Exhaust Fan (CFM 200) 1.0
- Condensate Pump 2.0
- (20"x20") Door Access 42.0
- (24"x24") Ceiling Diffuser 23.0
- (30"x30") Ceiling Diffuser 1.0
- (12"x12") Ceiling Diffuser 4.0
- (12"x12") Exhaust Register 10.0
- (24"x24") Exhaust Register 1.0

**GENERAL NOTES**

- MECHANICAL CONTRACTOR SHALL PROVIDE NECESSARY SUPPLEMENTARY STEEL MEMBERS FOR THE SUPPORT OF SUSPENDED EQUIPMENT.
- PROVIDE ACCESS DOORS FOR VALVES, VENTS, ETC.
- MECHANICAL CONTRACTOR SHALL PROVIDE ALL NECESSARY WELLS IN A PIPING REQUIRED FOR THE TEMPERATURE CONTROL DEVICES, PRESSURE SENSORS, FLOW METERS, ETC.
- COORDINATE WITH THE ARCHITECT FOR THE EXACT LOCATIONS OF THERMOSTATS.
- PROVIDE VOLUME DAMPER AT EACH BRANCH DUCT & REGISTER AND CABLE OPERATED DAMPER FOR BRANCH DUCT, REGISTER & LINEAR DIFFUSER ABOVE NON-ACCESSIBLE CEILING.
- PROVIDE TRANSFER DUCTS ONLY WHERE THE WALLS GO UP TO SLAB.
- PROVIDE BOTTOM ACCESS TO ALL FAN POWER BOX UNITS.

**REFERENCE NOTES**

- PROVIDE COO AT LINEAR DIFFUSER.
- PROVIDE VD AT SQUARE DIFFUSERS (20x30, 24x24 & 12x12).
- PROVIDE ACCESS CLEARANCE TO ALL FPB AND AC UNITS.
- PROVIDE CLEARANCE FOR MAINTENANCE AND AIRFLOW.
- EXISTING FSD AT BUILDING RISER TAPS ARE TO BE REPLACED WITH NEW FSD.
- PROVIDE FSD AS REQUIRED.
- COORDINATE BEAM PENETRATION WITH STRUCTURAL ENGINEER.

THESE PLANS ARE APPROVED ONLY FOR THE WORK INDICATED ON THE APPLICATION SPECIFICATION SHEET. ALL OTHER MATTERS SHOWN ARE NOT TO BE RELIED UPON OR TO BE CONSIDERED AS EITHER BEING APPROVED OR IN ACCORDANCE WITH APPLICABLE CODES.

THIS APPLICATION DOES NOT INVOLVE CHANGES IN EXISTING EXITS, MEANS OF EGRESS, USE GROUP, OCCUPANCY, OR CERTIFICATE OF OCCUPANCY.

**FMC** FMC ENGINEERING, P.C.  
CONSULTING ENGINEERS  
261 WEST 35TH STREET  
NEW YORK, N.Y. 10001  
TEL: (212) 643-1720  
FAX: (212) 465-2033  
FMC PROJECT No.: 2023022

Scale  
1/8" = 1'-0"

**M-110.00**  
DOB NOW JOB # XX XXXX  
DRAWING NO. \_\_\_\_\_ OF \_\_\_\_\_

© 2022 Gensler

**Gensler**

1700 Broadway  
Suite 400  
New York, NY 10019  
United States  
Tel: 212.492.1400  
Fax: 212.492.1472

**YISRAEL A. SEINUK**

228 East 45th Street  
2nd Floor  
New York, NY 10017  
Tel: 212.687.2233  
Fax: 646.487.5555

**FMC Engineering, P.C.**

261 West 35th Street  
12A Floor  
New York, NY 10001  
Tel: 212.643.1720  
Fax: 212.465.2003

**Hammond Consulting Group LLC**

Tel: 732.556.1115  
Fax: 732.807.8255

**Tad.**

498 Seventh Ave  
22nd Floor S  
New York, NY 10018  
Tel: 646.216.9222

**dbb**

CLIVE METZBERG ASSOCIATES LIGHTING DESIGN  
116 E. 20th Street  
Suite 409  
New York, NY 10016  
Tel: 212.741.3280

**RG ROMANO GATLAND**

1 Huntington Quadrangle  
Suite C23  
Melville, NY 11747  
Tel: 516.724.0641

**Longman Lindsey**

200 West 41st Street  
Suite 1100  
New York, NY 10036  
Tel: 212.315.6400

Date	Description
03/12/24	ISSUE FOR BID

Seal / Signature

Project Name  
**DPW-450 Lex Restack**

Project Number  
**06.2118.500**

Description  
**MECHANICAL CONTROLS DETAILS SHEET - FLOOR 06 (MARKETING FLOOR 08)**

Scale  
**1/8" = 1'-0"**

**M-308.00**  
DOB NOW JOB # XX XXXX  
DRAWING NO. \_\_\_\_\_ OF \_\_\_\_\_

© 2022 Gensler

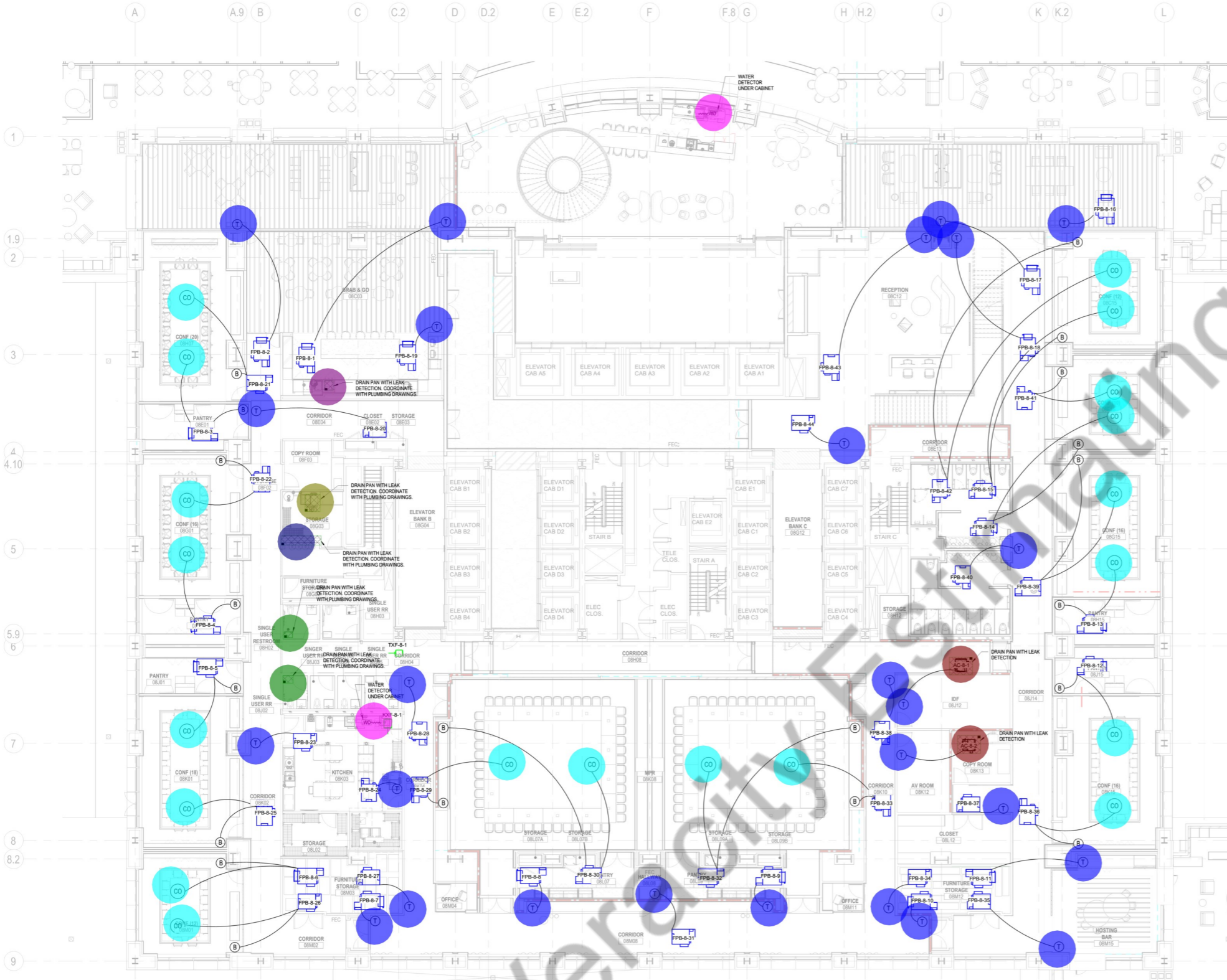
FAN POWERED TERMINAL UNIT SCHEDULE 8TH FLOOR							
UNIT NAME	INLET DIAMETER	UNIT TYPE	MODEL (DTFS-F)	CFM	GPM	HP	Comments
FPB-8-1	16" DIA	C	D	1560	2.7	1/2	
FPB-8-2	16" DIA	C	D	1560	2.7	1/2	
FPB-8-3	16" DIA	D	E	1800	3.6	3/4	
FPB-8-4	16" DIA	D	E	1800	3.6	3/4	
FPB-8-5	16" DIA	D	E	1800	3.6	3/4	
FPB-8-6	16" DIA	C	D	1320	2.7	1/2	
FPB-8-7	16" DIA	C	D	1500	2.7	1/2	
FPB-8-8	16" DIA	C	D	1500	2.7	1/2	
FPB-8-9	16" DIA	C	D	1500	2.7	1/2	
FPB-8-10	16" DIA	C	D	1500	2.7	1/2	
FPB-8-11	16" DIA	C	D	1200	2.7	1/2	
FPB-8-12	16" DIA	C	D	1200	2.7	1/2	
FPB-8-13	16" DIA	C	D	1200	2.7	1/2	
FPB-8-14	12" DIA	A	B	600	1.2	1/3	
FPB-8-15	12" DIA	A	B	900	1.2	1/3	
FPB-8-16	16" DIA	C	D	1350	2.7	1/2	
FPB-8-17	16" DIA	C	D	1560	2.7	1/2	
FPB-8-18	12" DIA	A	B	600	1.2	1/3	
FPB-8-19	16" DIA	C	D	1400	2.7	1/2	
FPB-8-20	12" DIA	F	C	800	1.0	1/3	
FPB-8-21	16" DIA	G	D	1200	1.2	1/2	
FPB-8-22	16" DIA	G	D	1200	1.2	1/2	
FPB-8-23	12" DIA	E	B	520	1.0	1/3	
FPB-8-24	12" DIA	F	C	800	1.0	1/3	
FPB-8-25	16" DIA	G	D	1200	1.2	1/2	
FPB-8-26	12" DIA	F	C	780	1.0	1/3	
FPB-8-27	12" DIA	E	B	500	1.0	1/3	
FPB-8-28	12" DIA	E	B	550	1.0	1/3	
FPB-8-29	16" DIA	H	E	2000	3.4	1/3	
FPB-8-30	16" DIA	H	E	2000	3.4	1/3	
FPB-8-31	12" DIA	F	C	800	1.0	1/3	
FPB-8-32	16" DIA	H	E	2000	3.4	1/3	
FPB-8-33	16" DIA	H	E	2000	3.4	1/3	
FPB-8-34	12" DIA	E	B	800	1.0	1/3	
FPB-8-35	12" DIA	F	C	780	1.0	1/3	
FPB-8-36	16" DIA	G	D	1200	1.2	1/2	
FPB-8-37	12" DIA	F	C	750	1.0	1/3	
FPB-8-38	12" DIA	E	B	600	1.0	1/3	
FPB-8-39	16" DIA	G	D	1200	1.2	1/2	
FPB-8-40	12" DIA	F	C	900	1.0	1/3	
FPB-8-41	12" DIA	E	B	600	1.0	1/3	
FPB-8-42	12" DIA	F	C	780	1.0	1/3	
FPB-8-43	16" DIA	H	E	2000	3.4	1/3	
FPB-8-44	12" DIA	E	B	550	1.0	1/3	

SUPPLEMENTAL AC UNIT SCHEDULE 8TH FLOOR								
Mark	SERVES SPACE	UNIT TYPE	MODEL	MBHT	MBHS	GPM	CFM	Comments
AC-8-1	IDF	D	T24SHWC-4	25.0	17.0	5.2	800	
AC-8-2	AV ROOM	D	T24SHWC-4	25.0	17.0	5.2	800	

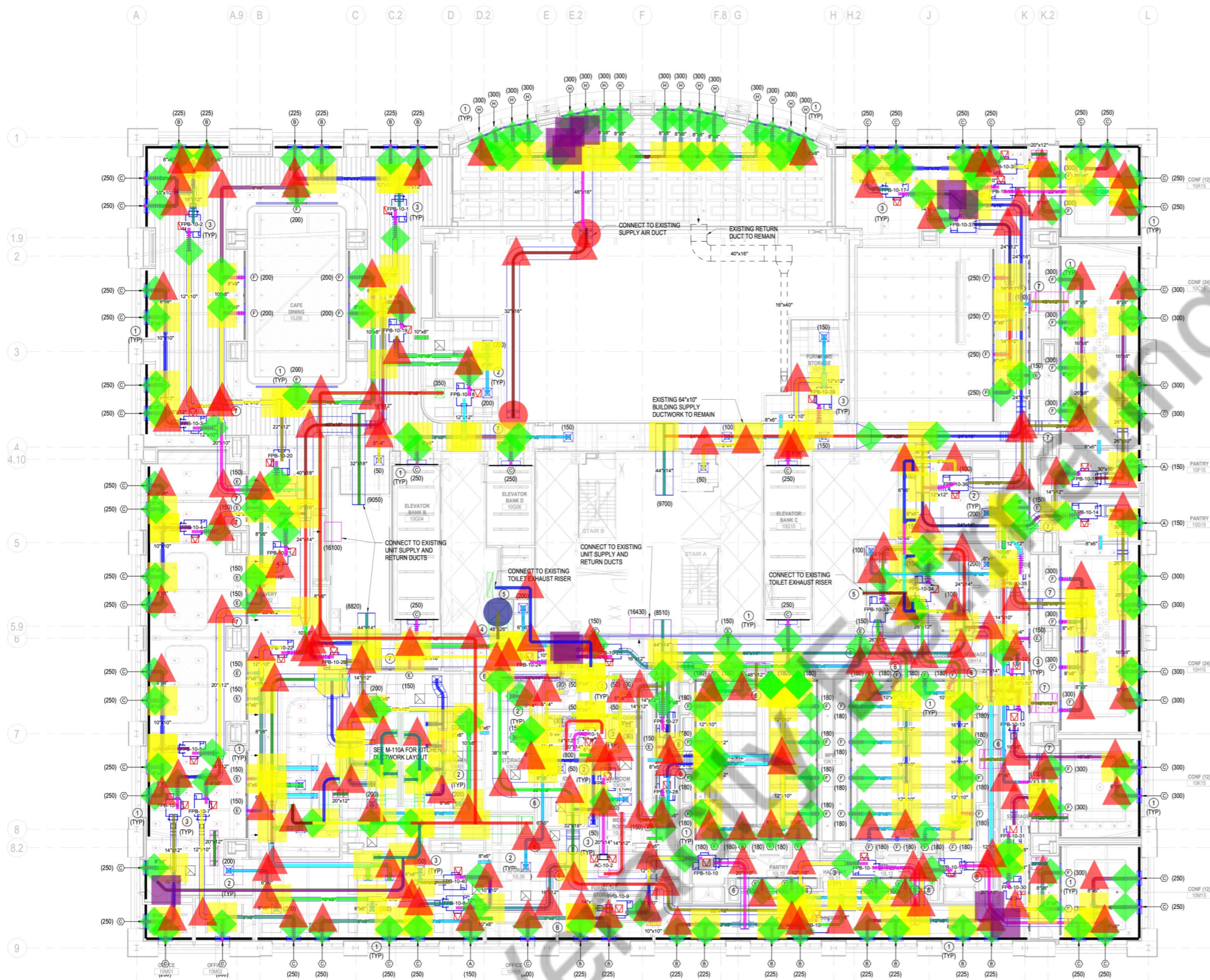
THESE PLANS ARE APPROVED ONLY FOR THE WORK INDICATED ON THE APPLICATION SPECIFICATION SHEET. ALL OTHER MATTERS SHOWN ARE NOT TO BE RELIED UPON OR TO BE CONSIDERED AS EITHER BEING APPROVED OR IN ACCORDANCE WITH APPLICABLE CODES.  
THIS APPLICATION DOES NOT INVOLVE CHANGES IN EXISTING EXITS, MEANS OF EGRESS, USE GROUP, OCCUPANCY, OR CERTIFICATE OF OCCUPANCY.



FMC ENGINEERING, P.C.  
CONSULTING ENGINEERS  
261 WEST 35TH STREET  
NEW YORK, N.Y. 10001  
TEL: (212) 643-1720  
FAX: (212) 465-2003  
FMC PROJECT No.: 2023022



**NOTES**  
1. TEMPERATURE SENSORS TO BE PROVIDED BY THE BUILDING.



**GENERAL NOTES**

- MECHANICAL CONTRACTOR SHALL PROVIDE NECESSARY SUPPLEMENTARY STEEL MEMBERS FOR THE SUPPORT OF SUSPENDED EQUIPMENT.
- PROVIDE ACCESS DOORS FOR VALVES, VENTS, ETC.
- MECHANICAL CONTRACTOR SHALL PROVIDE ALL NECESSARY WELLS IN A PIPING REQUIRED FOR THE TEMPERATURE CONTROL DEVICES, PRESSURE SENSORS, FLOW METERS, ETC.
- COORDINATE WITH THE ARCHITECT FOR THE EXACT LOCATIONS OF THERMOSTATS.
- PROVIDE VOLUME DAMPER AT EACH BRANCH DUCT & REGISTER AND CABLE OPERATED DAMPER FOR BRANCH DUCT, REGISTER & LINEAR DIFFUSER ABOVE NON-ACCESSIBLE CEILING.
- PROVIDE TRANSFER DUCTS ONLY WHERE THE WALLS GO UP TO SLAB.
- PROVIDE BOTTOM ACCESS TO ALL FAN POWER BOX UNITS.

**REFERENCE NOTES**

- PROVIDE COD AT LINEAR DIFFUSER.
- PROVIDE VD AT SQUARE DIFFUSERS (20x30, 24x24 & 12x12).
- PROVIDE ACCESS CLEARANCE TO ALL FPB AND AC UNITS.
- PROVIDE CLEARANCE FOR MAINTENANCE AND AIRFLOW.
- EXISTING FSD AT BUILDING RISER TAPS ARE TO BE REPLACED WITH NEW FSD.
- PROVIDE FSD AS REQUIRED.
- COORDINATE BEAM PENETRATION WITH STRUCTURAL ENGINEER.

(8" W x 8" D) Rectangular Duct	375.5 FT
(18" W x 14" D) Rectangular Duct	22.4 FT
Flexible Duct	551.0 FT
(24" W x 16" D) Rectangular Duct	117.2 FT
(48" W x 16" D) Rectangular Duct	17.2 FT
(40" W x 16" D) Rectangular Duct	9.8 FT
(32" W x 16" D) Rectangular Duct	66.4 FT
(32" W x 16" D) Rectangular Duct (10')	2.0
(26" W x 10" D) Rectangular Duct	76.6 FT
(26" W x 8" D) Rectangular Duct	31.2 FT
(16" W x 8" D) Rectangular Duct	87.2 FT
(44" W x 14" D) Rectangular Duct	107.2 FT
(64" W x 10" D) Rectangular Duct	43.1 FT
(6" W x 6" D) Rectangular Duct	464.9 FT
(5" W x 4" D) Rectangular Duct	108.2 FT
(12" W x 10" D) Rectangular Duct	377.4 FT
(8" W x 6" D) Rectangular Duct	219.5 FT
(12" W x 12" D) Rectangular Duct	135.8 FT
(34" W x 28" D) Rectangular Duct	14.0 FT
(18" W x 16" D) Rectangular Duct	10.8 FT
(14" W x 12" D) Rectangular Duct	172.5 FT
(24" W x 12" D) Rectangular Duct	19.6 FT
(18" W x 12" D) Rectangular Duct	52.5 FT
(16" W x 12" D) Rectangular Duct	114.5 FT
(14" W x 10" D) Rectangular Duct	24.8 FT
(10" W x 8" D) Rectangular Duct	256.2 FT
(12" W x 6" D) Rectangular Duct	4.3 FT
(10" W x 10" D) Rectangular Duct	194.1 FT
(22" W x 10" D) Rectangular Duct	58.4 FT
(20" W x 6" D) Rectangular Duct	13.5 FT
(30" W x 10" D) Rectangular Duct	17.5 FT
(36" W x 16" D) Rectangular Duct	12.1 FT
(34" W x 14" D) Rectangular Duct	27.1 FT
(22" W x 14" D) Rectangular Duct	30.2 FT
(14" W x 8" D) Rectangular Duct	4.4 FT
(24" W x 14" D) Rectangular Duct	50.5 FT
(26" W x 12" D) Rectangular Duct	47.6 FT
(20" W x 12" D) Rectangular Duct	53.2 FT
(16" W x 10" D) Rectangular Duct	23.0 FT
(20" W x 10" D) Rectangular Duct	64.5 FT
(30" W x 12" D) Rectangular Duct	6.8 FT
(40" W x 18" D) Rectangular Duct	26.8 FT
(32" W x 18" D) Rectangular Duct	60.5 FT
(22" W x 12" D) Rectangular Duct	48.5 FT
(30" W x 16" D) Rectangular Duct	3.5 FT
(14" W x 14" D) Rectangular Duct	23.2 FT
(12" W x 8" D) Rectangular Duct	51.7 FT
(30" W x 14" D) Rectangular Duct	19.1 FT
(38" W x 18" D) Rectangular Duct	41.0 FT
(46" W x 18" D) Rectangular Duct	31.7 FT
(20" W x 16" D) Rectangular Duct	28.3 FT
(20" W x 14" D) Rectangular Duct	19.7 FT
(58" W x 18" D) Rectangular Duct	7.4 FT
(26" W x 16" D) Rectangular Duct	6.0 FT
(90 D) Radius Elbow	187.0
Tee	228.0
Transition	211.0
(45 D) Radius Elbow	11.0
(5" W x 4" D) Rectangular Duct	51.3 FT
(6" W x 6" D) Rectangular Duct	66.5 FT
(10" W x 8" D) Rectangular Duct	6.6 FT
(10" W x 10" D) Rectangular Duct	8.0 FT
(12" W x 12" D) Rectangular Duct	17.0 FT
(8" W x 8" D) Rectangular Duct	148.1 FT
(48" W x 26" D) Rectangular Duct	5.7 FT
(48" W x 26" D) Rectangular Duct	1.0
(8" Dia) Circular Duct	58.6 FT
(18" W x 12" D) Rectangular Duct	42.3 FT
(44" W x 28" D) Rectangular Duct	25.6 FT
(44" W x 22" D) Rectangular Duct	8.4 FT
(24" W x 18" D) Rectangular Duct	35.4 FT
(22" W x 14" D) Rectangular Duct	11.9 FT
(10" W x 8" D) Rectangular Duct (20)	5.9 FT
(8" W x 6" D) Rectangular Duct (20)	16.3 FT
(20" W x 12" D) Rectangular Duct (20)	21.9 FT
(48" W x 12" D) Rectangular Duct (20)	24.8 FT
(30" W x 12" D) Rectangular Duct (20)	3.4 FT
(14" W x 12" D) Rectangular Duct (20)	06.211
(6" W x 6" D) Rectangular Duct (20)	5.9 FT
(10" W x 10" D) Rectangular Duct (20)	3.0 FT

THESE PLANS ARE APPROVED ONLY FOR THE WORK INDICATED ON THE APPLICATION SPECIFICATION SHEET. ALL OTHER MATTERS SHOWN ARE NOT TO BE RELIED UPON OR TO BE CONSIDERED AS EITHER BEING APPROVED OR IN ACCORDANCE WITH APPLICABLE CODES.

THIS APPLICATION DOES NOT INVOLVE CHANGES IN EXISTING EXITS, MEANS OF EGRESS, USE GROUP, OCCUPANCY, OR CERTIFICATE OF OCCUPANCY.

**FMC** ENGINEERING, P.C.  
 CONSULTING ENGINEERS  
 241 WEST 30TH STREET  
 NEW YORK, N.Y. 10001  
 TEL: (212) 645-1720  
 FAX: (212) 465-0033  
 FMC PROJECT NO.: 2023022

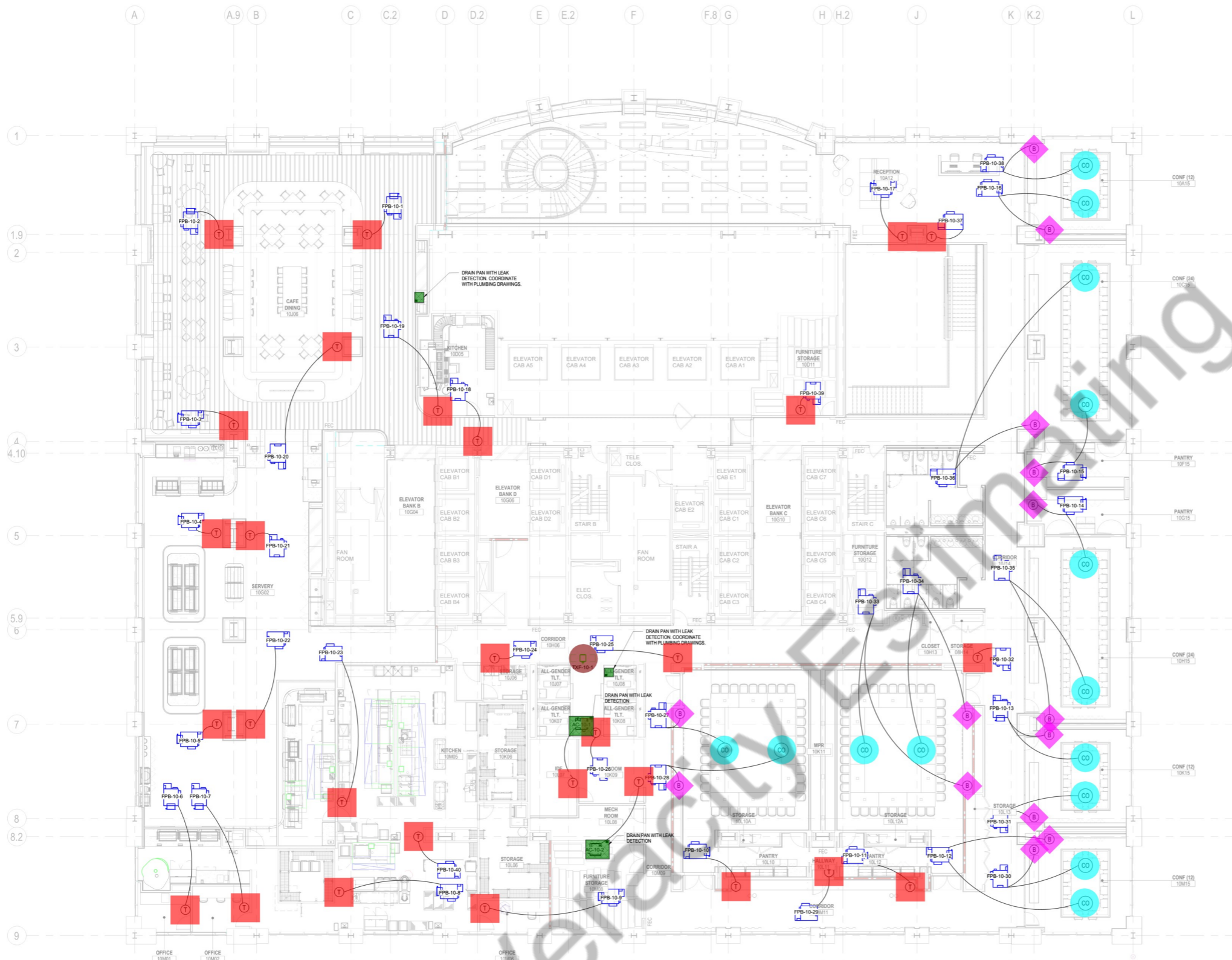
Scale: 1/8" = 1'-0"

**M-110.00**

DOB NOW JOB # XX XXXX

DRAWING NO. OF

MECHANICAL PLAN - FLOOR 7



FAN POWERED TERMINAL UNIT SCHEDULE 10TH FLOOR							
UNIT NAME	INLET DIAMETER	UNIT TYPE	MODEL (DTFS-F)	CFM	GPM	HP	Comments
FPB-10-1	16" DIA	B	C	900	1.8	1/3	
FPB-10-2	16" DIA	B	C	950	1.8	1/3	
FPB-10-3	16" DIA	B	C	1000	1.8	1/3	
FPB-10-4	16" DIA	B	C	1000	1.8	1/3	
FPB-10-5	16" DIA	B	C	1000	1.8	1/3	
FPB-10-6	16" DIA	B	C	750	1.8	1/3	
FPB-10-7	12" DIA	A	B	550	1.2	1/3	
FPB-10-8	16" DIA	B	C	900	1.8	1/3	
FPB-10-9	16" DIA	B	C	750	1.8	1/3	
FPB-10-10	16" DIA	B	C	900	1.8	1/3	
FPB-10-11	16" DIA	B	C	900	1.8	1/3	
FPB-10-12	16" DIA	B	C	1000	1.8	1/3	
FPB-10-13	12" DIA	A	B	600	1.2	1/3	
FPB-10-14	16" DIA	C	D	1350	2.7	1/2	
FPB-10-15	16" DIA	C	D	1350	2.7	1/2	
FPB-10-16	16" DIA	B	C	1000	1.8	1/3	
FPB-10-17	16" DIA	B	C	1000	1.8	1/3	
FPB-10-18	12" DIA	E	B	700	1.3	1/3	
FPB-10-19	12" DIA	E	B	400	1.3	1/3	
FPB-10-20	16" DIA	G	D	1200	1.2	1/3	
FPB-10-21	12" DIA	E	B	600	1.3	1/3	
FPB-10-22	12" DIA	E	B	600	1.3	1/3	
FPB-10-23	12" DIA	F	C	800	1.3	1/3	
FPB-10-24	12" DIA	F	C	750	1.3	1/3	
FPB-10-25	12" DIA	F	C	850	1.3	1/3	
FPB-10-26	12" DIA	F	C	770	1.3	1/3	
FPB-10-27	16" DIA	G	D	1440	1.2	1/2	
FPB-10-28	16" DIA	G	D	1440	1.2	1/2	
FPB-10-29	12" DIA	E	B	1440	1.3	1/3	
FPB-10-30	12" DIA	F	C	600	1.3	1/3	
FPB-10-31	12" DIA	F	C	950	1.3	1/3	
FPB-10-32	12" DIA	F	C	600	1.3	1/3	
FPB-10-33	16" DIA	G	D	1440	1.2	1/2	
FPB-10-34	16" DIA	G	D	1440	1.2	1/2	
FPB-10-35	16" DIA	G	D	1200	1.2	1/2	
FPB-10-36	16" DIA	G	D	1200	1.2	1/2	
FPB-10-37	16" DIA	G	D	1300	1.2	1/2	
FPB-10-38	12" DIA	F	C	600	1.3	1/3	
FPB-10-39	12" DIA	E	B	700	1.3	1/3	
FPB-10-40	12" DIA	F	C	800	1.3	1/3	

SUPPLEMENTAL AC UNIT SCHEDULE 10TH FLOOR								
Mark	SERVES SPACE	UNIT TYPE	MODEL	MBHT	MBHS	GPM	CFM	Comments
AC-10-1	IDF	D	T24SHWC-4	25.0	17.0	5.2	800	
AC-10-2	AV ROOM	D	T24SHWC-4	25.0	17.0	5.2	800	

● T	28.0	■
● B	14.0	◆
● CO	14.0	●
● TXF-10-1	1.0	●
■ Drain Pan	49.7 SQ FT	■

**NOTES**  
1. TEMPERATURE SENSORS TO BE PROVIDED BY THE BUILDING.

THESE PLANS ARE APPROVED ONLY FOR THE WORK INDICATED ON THE APPLICATION SPECIFICATION SHEET. ALL OTHER MATTERS SHOWN ARE NOT TO BE RELIED UPON OR TO BE CONSIDERED AS EITHER BEING APPROVED OR IN ACCORDANCE WITH APPLICABLE CODES.  
THIS APPLICATION DOES NOT INVOLVE CHANGES IN EXISTING EXITS, MEANS OF EGRESS, USE GROUP, OCCUPANCY, OR CERTIFICATE OF OCCUPANCY.

**FMC** FMC ENGINEERING, P.C.  
CONSULTING ENGINEERS  
261 WEST 35TH STREET  
NEW YORK, N.Y. 10001  
TEL: (212) 643-1720  
FAX: (212) 465-2023  
FMC PROJECT No.: 2023022

**Gensler**  
1700 Broadway  
Suite 400  
New York, NY 10019  
United States  
Tel: 212.492.1400  
Fax: 212.492.1472

**VNS** YISRAEL A. SEINUK  
228 East 45th Street  
2nd Floor  
New York, NY 10017  
Tel: 212.687.2233  
Fax: 646.487.5555

**FMC Engineering, P.C.**  
261 West 35th Street  
New York, NY 10001  
Tel: 212.643.1720  
Fax: 212.465.2023

Hammond Consulting Group LLC  
Tel: 732.556.1115  
Fax: 732.807.8255

**Tad.**  
498 Seventh Ave  
22nd Floor S  
New York, NY 10018  
Tel: 646.216.9222

**dbb**  
CLINE BETTENDORF BERENSON LIGHTING DESIGN  
116 E. 20th Street  
Suite 409  
New York, NY 10016  
Tel: 212.741.3280

**RG** ROMANO GATLAND  
1 Harrington Quadrangle  
Suite 203  
Melville, NY 11747  
Tel: 516.724.0641

**Longman Lindsey**  
200 West 41st Street  
Suite 1100  
New York, NY 10036  
Tel: 212.315.6400

**Date** Description  
03/12/24 ISSUE FOR BID

Seal / Signature

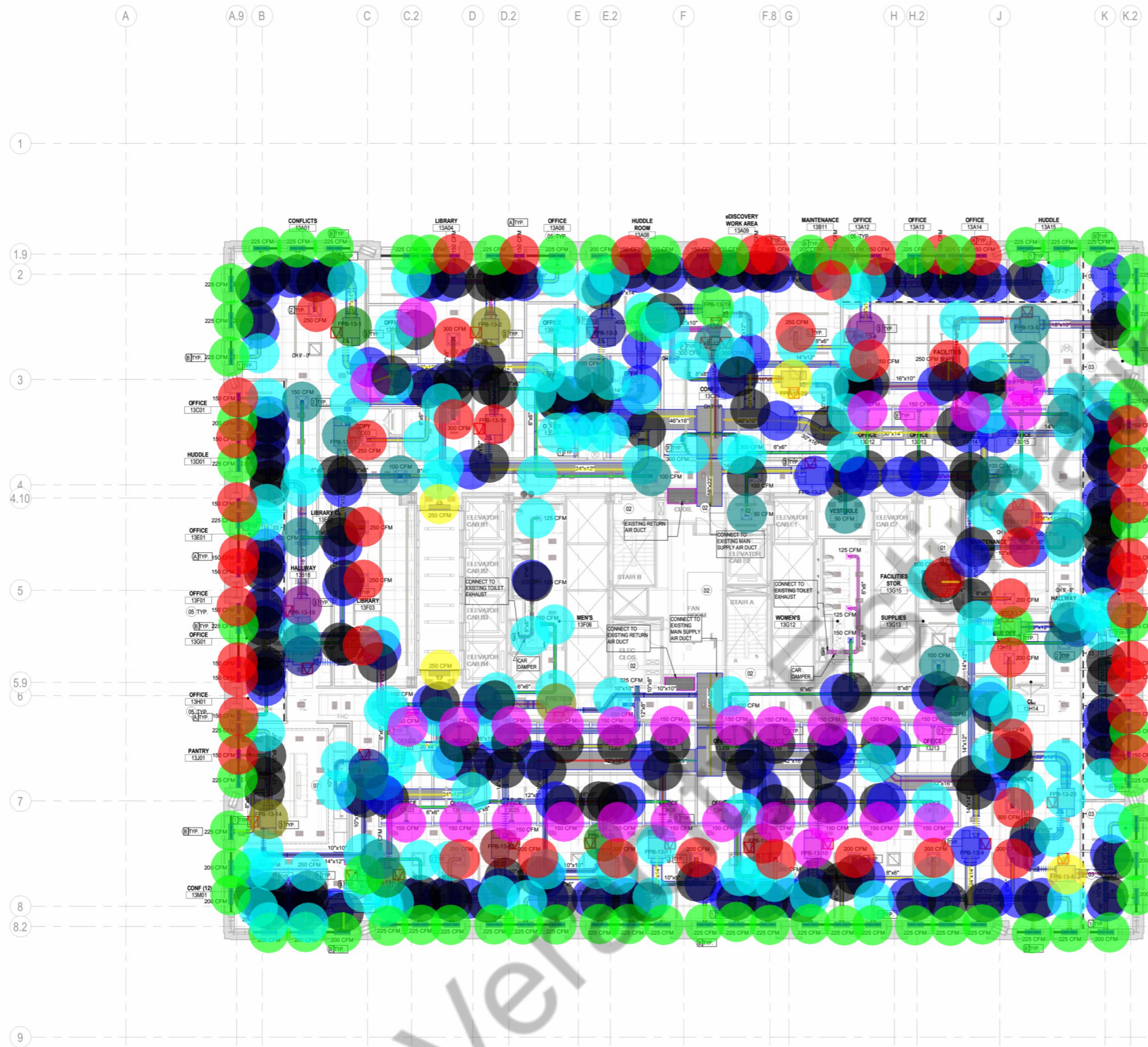
Project Name  
DPW-450 Lex Restack

Project Number  
06.2118.500

Description  
MECHANICAL CONTROLS DETAILS SHEET - FLOOR 07 (MARKETING FLOOR 10)

Scale  
1/8" = 1'-0"

**M-310.00**  
DOB NOW JOB # XX XXXX  
DRAWING NO. \_\_\_\_\_ OF \_\_\_\_\_



- (8" W x 6" D) Rectangular Duct 655.3 FT
- (12" W x 8" D) Rectangular Duct 109.2 FT
- (14" W x 10" D) Rectangular Duct 114.5 FT
- (16" W x 12" D) Rectangular Duct 69.1 FT
- (16" W x 14" D) Rectangular Duct 3.3 FT
- (20" W x 14" D) Rectangular Duct 22.0 FT
- (14" W x 14" D) Rectangular Duct 48.1 FT
- (24" W x 12" D) Rectangular Duct 134.0 FT
- (28" W x 16" D) Rectangular Duct 7.7 FT
- (46" W x 16" D) Rectangular Duct 13.3 FT
- (48" W x 18" D) Rectangular Duct 10.5 FT
- (30" W x 16" D) Rectangular Duct 9.3 FT
- (30" W x 14" D) Rectangular Duct 27.5 FT
- (22" W x 14" D) Rectangular Duct 28.3 FT
- (14" W x 12" D) Rectangular Duct 176.8 FT
- (16" W x 10" D) Rectangular Duct 55.7 FT
- (10" W x 8" D) Rectangular Duct 101.6 FT
- (14" W x 8" D) Rectangular Duct 48.9 FT
- (6" W x 6" D) Rectangular Duct 668.7 FT
- (24" W x 14" D) Rectangular Duct 37.4 FT
- (22" W x 12" D) Rectangular Duct 67.2 FT
- (20" W x 12" D) Rectangular Duct 78.1 FT
- (26" W x 12" D) Rectangular Duct 6.6 FT
- (16" W x 8" D) Rectangular Duct 57.1 FT
- (8" W x 8" D) Rectangular Duct 108.6 FT
- (58" W x 22" D) Rectangular Duct 38.6 FT
- (10" W x 10" D) Rectangular Duct 150.9 FT
- (18" W x 10" D) Rectangular Duct 107.1 FT
- (18" W x 14" D) Rectangular Duct 5.9 FT
- (20" W x 10" D) Rectangular Duct 35.2 FT
- (18" W x 18" D) Rectangular Duct 14.8 FT
- (12" W x 10" D) Rectangular Duct 116.2 FT
- (18" W x 12" D) Rectangular Duct 72.5 FT
- (12" W x 12" D) Rectangular Duct 21.2 FT
- (46" W x 18" D) Rectangular Duct 6.1 FT
- (42" W x 16" D) Rectangular Duct 15.2 FT
- (32" W x 16" D) Rectangular Duct 39.3 FT
- (50" W x 18" D) Rectangular Duct 9.0 FT
- (42" W x 18" D) Rectangular Duct 21.5 FT
- (36" W x 18" D) Rectangular Duct 8.2 FT
- Tea 169.0
- (90 D) Bend 114.0
- Duct Transition 121.0
- FPB-13-1 1.0
- FPB-13-3 1.0
- FPB-13-5 1.0
- FPB-13-4 1.0
- FPB-13-20 1.0
- FPB-13-2 1.0
- FPB-13-22 1.0
- FPB-13-7 1.0
- FPB-13-19 1.0
- FPB-13-21 1.0
- FPB-13-8 1.0
- FPB-13-6 1.0
- FPB-13-23 1.0
- FPB-13-10 1.0
- FPB-13-24 1.0
- FPB-13-11 1.0
- FPB-13-25 1.0
- FPB-13-12 1.0
- FPB-13-26 1.0
- FPB-13-13 1.0
- FPB-13-14 1.0
- FPB-13-15 1.0
- FPB-13-27 1.0
- FPB-13-16 1.0
- FPB-13-17 1.0
- FPB-13-9 1.0
- FPB-13-18 1.0
- AC-13-1 1.0
- AC-13-2 1.0
- AC-13-3 1.0
- B 65.0
- A 31.0
- E 28.0
- F 13.0
- (24x24) Square Diffuser 23.0
- (24x24) Square Diffuser 17.0
- (24x24) Square Diffuser 1.0
- C 2.0

**GENERAL NOTES**

1. MECHANICAL CONTRACTOR SHALL PROVIDE NECESSARY SUPPLEMENTARY STEEL MEMBERS FOR THE SUPPORT OF SUSPENDED EQUIPMENT.
2. PROVIDE ACCESS DOORS FOR VALVES, VENTS, ETC.
3. MECHANICAL CONTRACTOR SHALL PROVIDE ALL NECESSARY WELLS IN A PIPING REQUIRED FOR THE TEMPERATURE CONTROL DEVICES, PRESSURE SENSORS, FLOW METERS, ETC.
4. COORDINATE WITH THE ARCHITECT FOR THE EXACT LOCATIONS OF THERMOSTATS.
5. PROVIDE VOLUME DAMPERS AT EACH BRANCH DUCT & REGISTER AND CABLE OPERATED DAMPER FOR BRANCH DUCT, REGISTER & LINEAR DIFFUSER ABOVE NON-ACCESSIBLE CEILING.
6. PROVIDE 3/4" X 1/2" TRANSFER DUCTS ONLY WHERE THE WALLS GO UP TO SLAB.
7. PROVIDE BOTTOM ACCESS TO ALL FAN POWER BOX UNITS.

**REFERENCE NOTES**

1. PROVIDE COD AT LINEAR DIFFUSER.
2. PROVIDE VD AT SQUARE DIFFUSERS (30x30, 24x24 & 12x12).
3. PROVIDE ACCESS CLEARANCE TO ALL FPB AND AC UNITS.
4. PROVIDE CLEARANCE FOR MAINTENANCE AND AIRFLOW.
5. EXISTING FSD AT BUILDING RISER TAPS ARE TO BE REPLACED WITH NEW FSD.



