

Building Data Summary

Project ID:	(Single Family Residence)
Location:	***** Seaside Heights, NJ
Scope of Work:	All Trades - GC
Date:	*****



**VERACITY**  
**ESTIMATING**

Construction Estimation Services

Item #	Ref. Sheet #	Item Description	Unit	Quantity	Wastage	Quantity w/ Wastage	Unit Material Cost	Total Material Cost	Unit Manhour	Hourly Wage	Unit Labor Cost	Total Labor Cost	Sub Cost	Total Trade Cost
<b>DIVISION 01 GENERAL REQUIREMENTS</b>														
1		Supervision and Coordination	LS	1	0%	1	\$ -	\$ -	0.000	\$ -	\$ -	\$ -	\$ 8,500.00	
2		Submittals and Shop drawings	LS	1	0%	1	\$ -	\$ -	0.000	\$ -	\$ -	\$ -	\$ 500.00	
3		Final Cleaning	LS	1	0%	1	\$ -	\$ -	0.000	\$ -	\$ -	\$ -	\$ 2,000.00	
4		Mobilization Costs	LS	1	0%	1	\$ -	\$ -	0.000	\$ -	\$ -	\$ -	\$ 3,800.00	
5		Temporary Control & Facilities	LS	1	0%	1	\$ -	\$ -	0.000	\$ -	\$ -	\$ -	\$ 2,500.00	
6		Scaffolding	SF	8890	10%	9779	\$ -	\$ -	0.000	\$ -	\$ -	\$ -	\$ 1,090.21	
<b>Subtotal (General Requirements)</b>														\$ 17,300
<b>DIVISION 02- SITE WORK/ EXISTING CONDITIONS</b>														
<b>Excavation</b>														
7	A3	(16" Dia, 36" Deep) Excavation For Underpost Footing - (4 EA)	CY	0.62	10%	1	\$ -	\$ -	0.850	\$ 60.00	\$ 51.00	\$ 34.78	\$ 34.78	
<b>Subtotal (Site Work/ Existing Conditions)</b>														\$ 35
<b>DIVISION 03- CONCRETE</b>														
<b>Foundation</b>														
<b>Concrete</b>														
8	A3	4" Concrete Slab W/ 6x6 10/10 W.W.F - (426 SF)	CY	5.21	10%	5.73	\$ 298.65	\$ 1,711.56	2.850	\$ 60.00	\$ 171.00	\$ 980.00	\$ 2,691.56	
9		(12" Dia, 30" Deep) Concrete Footing Underpost - (4 EA)	CY	0.29	10%	0.32	\$ 298.65	\$ 95.27	2.850	\$ 60.00	\$ 171.00	\$ 54.55	\$ 149.82	
<b>Subtotal (Concrete)</b>														\$ 2,841
<b>DIVISION 05- METAL</b>														
<b>Foundation</b>														
<b>Holdown</b>														
10		"HD" Simpson CMSTC16 Coil Strap Wrap (2'-6" L, 20 LF)	EA	4	0%	4	\$ 4.95	\$ 19.80	0.032	\$ 60.00	\$ 1.92	\$ 7.68	\$ 27.48	
11		"HD2" Simpson HL73 Heavy Angle	LF	32	5%	34	\$ 17.98	\$ 604.13	0.200	\$ 60.00	\$ 12.00	\$ 403.20	\$ 1,007.33	
<b>Bolts</b>														
12		Galvanized Thru Bolts At Each Pile	EA	12	0%	12	\$ 4.95	\$ 59.40	0.032	\$ 60.00	\$ 1.92	\$ 23.04	\$ 82.44	
<b>Simpson</b>														
13		Simpson LSC	EA	24	0%	24	\$ 4.95	\$ 118.80	0.032	\$ 60.00	\$ 1.92	\$ 46.08	\$ 164.88	
14		Simpson ABU66	EA	4	0%	4	\$ 4.95	\$ 19.80	0.032	\$ 60.00	\$ 1.92	\$ 7.68	\$ 27.48	
<b>First Floor</b>														
<b>Holdown</b>														
15		"HD2" Simpson CMSTC16 Coil Strap Wrap (2'-6" L, 10 LF)	LF	10	0%	10	\$ 4.95	\$ 49.50	0.032	\$ 60.00	\$ 1.92	\$ 19.20	\$ 68.70	
16		"HD2" Simpson HL73 Heavy Angle	LF	32	5%	34	\$ 17.98	\$ 604.13	0.200	\$ 60.00	\$ 12.00	\$ 403.20	\$ 1,007.33	
17		#4 CS16 Strap Each Post (2'-6" H, 10 LF)	EA	4	0%	4	\$ 4.95	\$ 19.80	0.032	\$ 60.00	\$ 1.92	\$ 7.68	\$ 27.48	
<b>Second Floor</b>														
18		#4 CS16 Strap Each Post (2'-6" H, 10 LF) @ S/F	EA	4	0%	4	\$ 4.95	\$ 19.80	0.032	\$ 60.00	\$ 1.92	\$ 7.68	\$ 27.48	
<b>Subtotal (Metals)</b>														\$ 2,441
<b>DIVISION 06- WOOD, PLASTIC &amp; COMPOSITES</b>														
<b>Foundation</b>														
<b>Pile</b>														
19		10" PT Timber Pile (15'-0" Length, 20 EA)	LF	300	5%	315	\$ 17.68	\$ 5,569.20	0.040	\$ 60.00	\$ 2.40	\$ 756.00	\$ 6,325.20	
19		Lower Floor Pile 10" PT Timber Pile (15'-0" Length, 4 EA)	LF	60	5%	63	\$ 17.68	\$ 1,113.84	0.040	\$ 60.00	\$ 2.40	\$ 151.20	\$ 1,265.04	
<b>Joist</b>														
20		2x8 DJ @ 16" O.C. - (97 SF)	LF	74	5%	78	\$ 1.52	\$ 118.00	0.018	\$ 60.00	\$ 1.08	\$ 83.84	\$ 201.84	
20		11-7/8" TJI 210 @ 16" O.C. - (858 SF)	LF	646	5%	678	\$ 1.52	\$ 1,031.20	0.018	\$ 60.00	\$ 1.08	\$ 732.69	\$ 1,763.89	
21		2x10 Low Joist @ 16" O.C. - (26 SF)	LF	21	5%	22	\$ 1.52	\$ 33.52	0.018	\$ 60.00	\$ 1.08	\$ 23.81	\$ 57.33	
<b>Girder</b>														
22		2x10 Girder	LF	311	5%	327	\$ 17.68	\$ 5,773.40	0.040	\$ 60.00	\$ 2.40	\$ 783.72	\$ 6,557.12	
23		2x8 Girder	LF	48	5%	50	\$ 17.68	\$ 891.07	0.040	\$ 60.00	\$ 2.40	\$ 120.96	\$ 1,012.03	
23		5-1/4" x11-7/8" LVL Girder	LF	16	5%	17	\$ 21.20	\$ 356.16	0.045	\$ 60.00	\$ 2.70	\$ 45.36	\$ 401.52	
24		3-1/2" x 11-7/8" PSL Girder	LF	152	5%	160	\$ 21.20	\$ 3,383.52	0.045	\$ 60.00	\$ 2.70	\$ 430.92	\$ 3,814.44	
24		1-3/4" x11-7/8" LVL Girder	LF	23	5%	24	\$ 17.68	\$ 426.97	0.040	\$ 60.00	\$ 2.40	\$ 57.96	\$ 484.93	
<b>Bracing</b>														
25		2x12 Cross Bracing	LF	35	5%	37	\$ 6.92	\$ 254.31	0.035	\$ 60.00	\$ 2.10	\$ 77.18	\$ 331.49	
<b>Post</b>														
26		6x6 Post (4'-9"H, 4 EA)	LF	20	5%	21	\$ 3.98	\$ 83.58	0.025	\$ 60.00	\$ 1.50	\$ 31.50	\$ 115.08	
<b>Stringer</b>														
27		Double PT 2x12 Stringer @ 12" O.C. - (41 SF)	LF	42	5%	44	\$ 3.98	\$ 175.52	0.025	\$ 60.00	\$ 1.50	\$ 66.15	\$ 241.67	
<b>Ledger Board</b>														
28		PT 2x Ledger Board	LF	16	5%	17	\$ 3.98	\$ 66.86	0.025	\$ 60.00	\$ 1.50	\$ 25.20	\$ 92.06	
<b>First Floor</b>														
<b>Joist</b>														
29		2x10 DJ Dripped @ 16" O.C. - (185 SF)	LF	140	5%	147	\$ 1.52	\$ 223.60	0.018	\$ 60.00	\$ 1.08	\$ 158.87	\$ 382.47	
29		11-7/8" TJI 210 @ 16" O.C. - (763 SF)	LF	575	5%	603	\$ 1.52	\$ 917.20	0.018	\$ 60.00	\$ 1.08	\$ 651.69	\$ 1,568.89	
<b>Header</b>														
30		2x8 Header	LF	100	5%	105	\$ 3.98	\$ 417.90	0.025	\$ 60.00	\$ 1.50	\$ 157.50	\$ 575.40	
30		2x10 Header	LF	88	5%	92	\$ 6.25	\$ 577.50	0.024	\$ 60.00	\$ 1.44	\$ 133.06	\$ 710.56	
<b>Beam</b>														
31		2x10 Drop Beam	LF	144	5%	151	\$ 6.25	\$ 945.00	0.024	\$ 60.00	\$ 1.44	\$ 217.73	\$ 1,162.73	
31		2x10 Low Beam	LF	60	5%	63	\$ 6.25	\$ 393.75	0.024	\$ 60.00	\$ 1.44	\$ 90.72	\$ 484.47	
32		3-1/2" x 11-7/8" LVL Beam	LF	16	5%	17	\$ 21.20	\$ 356.16	0.045	\$ 60.00	\$ 2.70	\$ 45.36	\$ 401.52	
32		1-3/4" x 11-7/8" LVL Beam	LF	54	5%	57	\$ 17.68	\$ 1,002.46	0.040	\$ 60.00	\$ 2.40	\$ 136.08	\$ 1,138.54	
<b>Post</b>														
33		6x6 Post (2 EA, 9'-6"H)	LF	19	5%	20	\$ 3.98	\$ 79.40	0.025	\$ 60.00	\$ 1.50	\$ 29.93	\$ 109.33	
<b>Stairs</b>														
34		(3'-3" Wide) 3/16" Oak Stair Riser Plank And 3/8" Oak Stair Tread Plank (14 EA) Tread, (16 EA) Riser	EA	1	0%	1	\$ 1,505.10	\$ 1,505.10	1.210	\$ 60.00	\$ 72.60	\$ 72.60	\$ 1,577.70	
<b>Guard Rail</b>														
35		Oak Guard Rail @ Stair 36" High	LF	14	5%	15	\$ 13.85	\$ 203.60	0.150	\$ 60.00	\$ 9.00	\$ 132.30	\$ 335.90	
<b>Ledger Board</b>														
36		PT 2x Ledger Board	LF	39	5%	41	\$ 3.98	\$ 162.98	0.025	\$ 60.00	\$ 1.50	\$ 61.43	\$ 224.41	
<b>Fiber Glass &amp; Sheathing</b>														
37		Fiber Glass @ Deck	SF	79	5%	83	\$ 3.98	\$ 330.14	0.020	\$ 60.00	\$ 1.20	\$ 99.54	\$ 429.68	
37		3/4" CDX T&G Plywood	SF	79	5%	83	\$ 0.98	\$ 81.29	0.020	\$ 60.00	\$ 1.20	\$ 99.54	\$ 180.83	
38		1/2" AC Plywood Sheathing @ Deck	SF	79	5%	83	\$ 0.98	\$ 81.29	0.020	\$ 60.00	\$ 1.20	\$ 99.54	\$ 180.83	
38		1/2" Plywood Sheathing @ Floor	SF	977	5%	1026	\$ 0.98	\$ 1,005.33	0.020	\$ 60.00	\$ 1.20	\$ 1,231.02	\$ 2,236.35	
<b>Second Floor</b>														
<b>Joist</b>														
39		11-7/8" TJI 210 @ 16" O.C. - (561 SF)	LF	423	5%	444	\$ 1.52	\$ 674.80	0.018	\$ 60.00	\$ 1.08	\$ 479.46	\$ 1,154.26	
39		2x10 Low Joist @ 16" O.C. - (30 SF)	LF	24	5%	25	\$ 1.52	\$ 37.60	0.018	\$ 60.00	\$ 1.08	\$ 26.71	\$ 64.31	
40		Double 2x10 DJ Ripped @ 16" O.C. - (276 SF)	LF	209	5%	219	\$ 1.52	\$ 332.80	0.018	\$ 60.00	\$ 1.08	\$ 236.46	\$ 569.26	
<b>Header</b>														
41		2x8 Header	LF	112	5%	118	\$ 3.98	\$ 468.05	0.025	\$ 60.00	\$ 1.50	\$ 176.40	\$ 644.45	
41	A3-A4	2x10 Header	LF	96	5%	101	\$ 6.25	\$ 630.00	0.024	\$ 60.00	\$ 1.44	\$ 145.15	\$ 775.15	
<b>Beam</b>														
42		2x10 Drip Beam	LF	104	5%	109	\$ 6.25	\$ 682.50	0.024	\$ 60.00	\$ 1.44	\$ 157.25	\$ 839.75	
42		2x10 Low Beam	LF	60	5%	63	\$ 6.25	\$ 393.75	0.024	\$ 60.00	\$ 1.44	\$ 90.72	\$ 484.47	
43		1-3/4" x 11-7/8" LVL Beam	LF	54	5%	57	\$ 17.68	\$ 1,002.46	0.040	\$ 60.00	\$ 2.40	\$ 136.08	\$ 1,138.54	
<b>Post</b>														
44		6x6 Post (2 EA, 9'-6"H)	LF	19	5%	20	\$ 3.98	\$ 79.40	0.025	\$ 60.00	\$ 1.50	\$ 29.93	\$ 109.33	
<b>Stairs</b>														

Project ID:	(Single Family Residence)
Location:	***** Seaside Heights, NJ
Scope of Work:	All Trades - GC
Date:	*****



Item #	Ref. Sheet #	Item Description	Unit	Quantity	Wastage	Quantity w/ Wastage	Unit Material Cost	Total Material Cost	Unit Manhour	Hourly Wage	Unit Labor Cost	Total Labor Cost	Sub Cost	Total Trade Cost
45		(3'-3" Wide) 3/16" Oak Stair Riser Plank And 3/8" Oak Stair Tread Plank (14 EA) Tread, (16 EA) Riser	EA	1	0%	1	\$ 1,505.10	\$ 1,505.10	1.210	\$ 60.00	\$ 72.60	\$ 72.60	\$ 1,577.70	
46		<b>Guard Rail</b> Oak Guard Rail @ Stair 36" High	LF	14	5%	15	\$ 13.85	\$ 203.60	0.150	\$ 60.00	\$ 9.00	\$ 132.30	\$ 335.90	
47		<b>Ledger Board</b> PT 2x Ledger Board For Shear Wall	LF	39	5%	41	\$ 3.98	\$ 162.98	0.025	\$ 60.00	\$ 1.50	\$ 61.43	\$ 224.41	
48		<b>Fiber Glass &amp; Sheathing</b> Fiber Glass @ Deck	SF	191	5%	201	\$ 3.98	\$ 798.19	0.020	\$ 60.00	\$ 1.20	\$ 240.66	\$ 1,038.85	
48		1/2" Plywood Sheathing @ Floor	SF	981	5%	1030	\$ 0.98	\$ 1,009.45	0.020	\$ 60.00	\$ 1.20	\$ 1,236.06	\$ 2,245.51	
<b>Third Floor</b>														
49		<b>Joist</b> 2x6 Ceiling Joist @ 16" O.C. - (635 SF)	LF	478	5%	502	\$ 1.52	\$ 763.60	0.018	\$ 60.00	\$ 1.08	\$ 542.56	\$ 1,306.15	
50		<b>Header</b> 2x8 Header	LF	52	5%	55	\$ 3.98	\$ 217.31	0.025	\$ 60.00	\$ 1.50	\$ 81.90	\$ 299.21	
50		2x10 Header	LF	40	5%	42	\$ 6.25	\$ 262.50	0.024	\$ 60.00	\$ 1.44	\$ 60.48	\$ 322.98	
51		<b>Stairs</b> (3'-3" Wide) 3/16" Oak Stair Riser Plank And 3/8" Oak Stair Tread Plank (14 EA) Tread, (16 EA) Riser	EA	1	0%	1	\$ 1,505.10	\$ 1,505.10	1.210	\$ 60.00	\$ 72.60	\$ 72.60	\$ 1,577.70	
52		<b>Guard Rail</b> Oak Guard Rail @ Stair 36" High	LF	14	5%	15	\$ 13.85	\$ 203.60	0.150	\$ 60.00	\$ 9.00	\$ 132.30	\$ 335.90	
53		<b>Fiber Glass &amp; Sheathing</b> Fiber Glass @ Deck	SF	277	5%	291	\$ 3.98	\$ 1,157.58	0.020	\$ 60.00	\$ 1.20	\$ 349.02	\$ 1,506.60	
53		1/2" Plywood Sheathing @ Floor	SF	869	5%	912	\$ 0.98	\$ 894.20	0.020	\$ 60.00	\$ 1.20	\$ 1,094.94	\$ 1,989.14	
54		<b>Roof Framing</b> 2x2 Roof Rafter @ 1/4" O.C. - (942 SF)	LF	3769	5%	3957	\$ 2.30	\$ 9,102.14	0.022	\$ 60.00	\$ 1.32	\$ 5,223.83	\$ 14,325.97	
54		1/2" Plywood Sheathing @ Roof	SF	942	5%	989	\$ 0.98	\$ 969.32	0.020	\$ 60.00	\$ 1.20	\$ 1,186.92	\$ 2,156.24	
55		<b>Closet</b> First Floor (1'-6" W) Closets	LF	20	5%	21	\$ 365.00	\$ 7,665.00	0.512	\$ 60.00	\$ 30.72	\$ 645.12	\$ 8,310.12	
56		<b>Second Floor</b> (1'-6" W) Closets	LF	31	5%	33	\$ 365.00	\$ 11,880.75	0.512	\$ 60.00	\$ 30.72	\$ 999.94	\$ 12,880.69	
57		<b>Third Floor</b> (1'-6" W) Closets	LF	14	5%	15	\$ 365.00	\$ 5,365.50	0.512	\$ 60.00	\$ 30.72	\$ 451.58	\$ 5,817.08	
58		<b>Cabinet</b> First Floor (2'-0" W) Shaker Style Kitchen Base Cabinet Finished By: Crown Molding	LF	11	5%	12	\$ 365.66	\$ 4,223.37	0.512	\$ 60.00	\$ 30.72	\$ 354.82	\$ 4,578.19	
58		(2'-0" W) Shaker Style Upper Cabinet	LF	10	5%	11	\$ 365.66	\$ 3,839.43	0.512	\$ 60.00	\$ 30.72	\$ 322.56	\$ 4,161.99	
59		(2'-0" Wide) Soft Close Vanity Base Cabinet	LF	3	5%	3	\$ 365.66	\$ 1,151.83	0.512	\$ 60.00	\$ 30.72	\$ 96.77	\$ 1,248.60	
60		<b>Second Floor</b> (2'-0" Wide) Soft Close Vanity Base Cabinet	LF	8	5%	8	\$ 365.66	\$ 3,071.54	0.512	\$ 60.00	\$ 30.72	\$ 258.05	\$ 3,329.59	
61		<b>Third Floor</b> (2'-0" Wide) Soft Close Vanity Base Cabinet	LF	3	5%	3	\$ 365.66	\$ 1,151.83	0.512	\$ 60.00	\$ 30.72	\$ 96.77	\$ 1,248.60	
62		<b>Balcony Railing</b> White Vinyl Railing 36" High	LF	115	5%	121	\$ 13.85	\$ 1,672.39	0.150	\$ 60.00	\$ 9.00	\$ 1,086.75	\$ 2,759.14	
							<b>Subtotal (Wood &amp; Plastic Composites)</b>	<b>\$ 90,637</b>				<b>\$ 23,081</b>		<b>\$ 113,719</b>
<b>DIVISION 07- THERMAL &amp; MOISTURE PROTECTION</b>														
<b>Roofing</b>														
63		30 Year Timberline HD Shingle Roof In Standard Color	SF	942	5%	989	\$ 4.85	\$ 4,797.14	0.032	\$ 60.00	\$ 1.92	\$ 1,899.07	\$ 6,696.21	
64		Felt Paper	SF	942	5%	989	\$ 0.32	\$ 316.51	0.012	\$ 60.00	\$ 0.72	\$ 712.15	\$ 1,028.66	
64		Grade Aluminum White Gutter	LF	134	5%	141	\$ 4.25	\$ 597.98	0.032	\$ 60.00	\$ 1.92	\$ 270.14	\$ 868.12	
65		Grade Aluminum White Leader	EA	8	0%	8	\$ 65.65	\$ 525.20	0.210	\$ 60.00	\$ 12.60	\$ 100.80	\$ 626.00	
65		Downspout (8 EA, 38"-6" LF)	LF	308	5%	323	\$ 2.25	\$ 727.65	1.000	\$ 60.00	\$ 60.00	\$ 19,404.00	\$ 20,131.65	
66		Fascia	LF	150	5%	158	\$ 2.88	\$ 453.60	0.025	\$ 60.00	\$ 1.50	\$ 236.25	\$ 689.85	
66		Rake TRIM W/ Pre-Coated White Aluminum	LF	150	5%	158	\$ 2.88	\$ 453.60	0.025	\$ 60.00	\$ 1.50	\$ 236.25	\$ 689.85	
<b>Flashing</b>														
67		Windows Flashing	LF	387	5%	406	\$ 2.65	\$ 1,076.83	0.025	\$ 60.00	\$ 1.50	\$ 609.53	\$ 1,686.35	
67		Doors Flashing	LF	580	5%	609	\$ 2.65	\$ 1,613.85	0.025	\$ 60.00	\$ 1.50	\$ 913.50	\$ 2,527.35	
68		Exterior Wall Flashing	LF	141	5%	148	\$ 2.65	\$ 392.33	0.025	\$ 60.00	\$ 1.50	\$ 222.08	\$ 614.41	
68		Ridge Flashing	LF	56	5%	59	\$ 2.65	\$ 155.82	0.025	\$ 60.00	\$ 1.50	\$ 88.20	\$ 244.02	
69		Hip Flashing	LF	20	5%	21	\$ 2.65	\$ 55.65	0.025	\$ 60.00	\$ 1.50	\$ 31.50	\$ 87.15	
<b>Waterproofing</b>														
70		6 MIL Vapor Barrier Lapped 12"	SF	426	5%	447	\$ 0.32	\$ 143.14	0.012	\$ 60.00	\$ 0.72	\$ 322.06	\$ 465.19	
<b>Insulation</b>														
71		3" Rigid Closed Cell Insulation Under Deck	SF	547	5%	574	\$ 1.23	\$ 706.45	0.015	\$ 60.00	\$ 0.90	\$ 516.92	\$ 1,223.37	
							<b>Subtotal (Thermal &amp; Moisture Protection)</b>	<b>\$ 7,872</b>			<b>\$ 22,859</b>		<b>\$ 30,730</b>	
<b>DIVISION 08- OPENINGS</b>														
<b>Door</b>														
72		<b>Foundation</b> (3'-0"x6'-8") Masonite Door W/ Frame White Painted	EA	4	0%	4	\$ 1,740.75	\$ 6,963.00	7.210	\$ 60.00	\$ 432.60	\$ 1,730.40	\$ 8,693.40	
73		(9'-0"x7'-0") Garage Door	EA	1	0%	1	\$ 5,460.00	\$ 5,460.00	12.200	\$ 60.00	\$ 732.00	\$ 732.00	\$ 6,192.00	
<b>First Floor</b>														
74		(2'-6"x6'-8") Masonite Door W/ Frame White Painted	EA	3	0%	3	\$ 560.00	\$ 1,680.00	2.000	\$ 60.00	\$ 120.00	\$ 360.00	\$ 2,040.00	
75		(2'-8"x6'-8") Masonite Door W/ Frame White Painted	EA	2	0%	2	\$ 560.00	\$ 1,120.00	2.000	\$ 60.00	\$ 120.00	\$ 240.00	\$ 1,360.00	
76		(2'-0"x6'-8") Masonite Door W/ Frame White Painted	EA	1	0%	1	\$ 560.00	\$ 560.00	2.000	\$ 60.00	\$ 120.00	\$ 120.00	\$ 680.00	
77		(3'-0"x6'-8") Masonite Door W/ Frame White Painted	EA	1	0%	1	\$ 560.00	\$ 560.00	2.000	\$ 60.00	\$ 120.00	\$ 120.00	\$ 680.00	
78		(5'-0"x6'-8") Masonite Door W/ Frame White Painted	EA	1	0%	1	\$ 725.00	\$ 725.00	2.250	\$ 60.00	\$ 135.00	\$ 135.00	\$ 860.00	
<b>Second Floor</b>														
79		(2'-6"x6'-8") Masonite Door W/ Frame White Painted	EA	5	0%	5	\$ 560.00	\$ 2,800.00	2.000	\$ 60.00	\$ 120.00	\$ 600.00	\$ 3,400.00	
80		(2'-8"x6'-8") Masonite Door W/ Frame White Painted	EA	3	0%	3	\$ 560.00	\$ 1,680.00	2.000	\$ 60.00	\$ 120.00	\$ 360.00	\$ 2,040.00	
81		(2'-0"x6'-8") Masonite Door W/ Frame White Painted	EA	2	0%	2	\$ 560.00	\$ 1,120.00	2.000	\$ 60.00	\$ 120.00	\$ 240.00	\$ 1,360.00	
82		(5'-0"x6'-8") Masonite Door W/ Frame White Painted	EA	1	0%	1	\$ 725.00	\$ 725.00	2.250	\$ 60.00	\$ 135.00	\$ 135.00	\$ 860.00	
<b>Third Floor</b>														
83		(2'-6"x6'-8") Masonite Door W/ Frame White Painted	EA	2	0%	2	\$ 560.00	\$ 1,120.00	2.000	\$ 60.00	\$ 120.00	\$ 240.00	\$ 1,360.00	
84		(2'-8"x6'-8") Masonite Door W/ Frame White Painted	EA	4	0%	4	\$ 560.00	\$ 2,240.00	2.000	\$ 60.00	\$ 120.00	\$ 480.00	\$ 2,720.00	
85		(22"x30" Attic Access Panel)	EA	1	0%	1	\$ 920.00	\$ 920.00	2.650	\$ 60.00	\$ 159.00	\$ 159.00	\$ 1,079.00	
86		(4'-0"x6'-8") Masonite Door W/ Frame White Painted	EA	2	0%	2	\$ 725.00	\$ 1,450.00	2.250	\$ 60.00	\$ 135.00	\$ 270.00	\$ 1,720.00	
87		(3'-0"x6'-8") Insulated Exterior Door W/ Frame	EA	2	0%	2	\$ 1,125.00	\$ 2,250.00	2.500	\$ 60.00	\$ 150.00	\$ 300.00	\$ 2,550.00	
87		(3'-0"x7'-0") Insulated Exterior Door W/ Frame	EA	1	0%	1	\$ 1,125.00	\$ 1,125.00	2.500	\$ 60.00	\$ 150.00	\$ 150.00	\$ 1,275.00	
<b>Doors Hardware</b>														
87		Door Hardware's	EA	33	0%	33	\$ 400.00	\$ 13,200.00	1.220	\$ 60.00	\$ 73.20	\$ 2,415.60	\$ 15,615.60	
<b>Windows</b>														
88		(2'-0"x3'-6") Silver Line Window W/ Frame	EA	1	0%	1	\$ 288.00	\$ 288.00	1.420	\$ 60.00	\$ 85.20	\$ 85.20	\$ 373.20	
89		(2'-6"x4'-0") Silver Line Window W/ Frame	EA	4	0%	4	\$ 560.00	\$ 2,240.00	2.000	\$ 60.00	\$ 120.00	\$ 480.00	\$ 2,720.00	
90		(3'-0"x3'-0") Silver Line Window W/ Frame	EA	1	0%	1	\$ 288.00	\$ 288.00	1.420	\$ 60.00	\$ 85.20	\$ 85.20	\$ 373.20	
91		(3'-0"x4'-0") Silver Line Window W/ Frame	EA	4	0%	4	\$ 480.00	\$ 1,920.00	1.680	\$ 60.00	\$ 100.80	\$ 403.20	\$ 2,323.20	
92		(3'-0"x5'-0") Double Hung Silver Line Window W/ Frame	EA	3	0%	3	\$ 575.00	\$ 1,725.00	1.680	\$ 60.00	\$ 100.80	\$ 302.40	\$ 2,027.40	
93		(3'-0"x5'-6") Silver Line Window W/ Frame	EA	2	0%	2	\$ 575.00	\$ 1,150.00	1.680	\$ 60.00	\$ 100.80	\$ 201.60	\$ 1,351.60	
94		(4'-0"x2'-0") Silver Line Window W/ Frame	EA	3	0%	3	\$ 480.00	\$ 1,440.00	1.680	\$ 60.00	\$ 100.80	\$ 302.40	\$ 1,742.40	
95		(6'-0"x7'-0") Silver Line Screen Window	EA	1	0%	1	\$ 1,536.00	\$ 1,536.00	2.620	\$ 60.00	\$ 157.20	\$ 157.20	\$ 1,693.20	
96		(7'-0"x8'-0") Silver Line Window W/ Frame	EA	1	0%	1	\$ 1,650.10	\$ 1,650.10	2.620	\$ 60.00	\$ 157.20	\$ 157.20	\$ 1,807.30	
97		(8'-0"x8'-0") Silver Line Window W/ Frame	EA	1	0%	1	\$ 1,855.22	\$ 1,855.22	2.620	\$ 60.00	\$ 157.20	\$ 157.20	\$ 2,012.42	
							<b>Subtotal</b>	<b>\$ 59,790</b>			<b>\$ 11,119</b>		<b>\$ 70,909</b>	

Project ID: (Single Family Residence)  
 Location: \*\*\*\*\* Seaside Heights, NJ  
 Scope of Work: All Trades - GC  
 Date: \*\*\*\*\*



Item #	Ref. Sheet #	Item Description	Unit	Quantity	Wastage	Quantity w/ Wastage	Unit Material Cost	Total Material Cost	Unit Manhour	Hourly Wage	Unit Labor Cost	Total Labor Cost	Sub Cost	Total Trade Cost
<b>DIVISION 09- FINISHES</b>														
<b>Drywall</b>														
<b>Foundation</b>														
<b>Wall Type "Stud Wall" As; (93 LF, 9'-6" H)</b>														
98		(5/8") Gypsum Board Type "X"	SF	1767	5%	1855	\$ 0.98	\$ 1,818.24	0.020	\$ 60.00	\$ 1.20	\$ 2,226.42	\$	\$ 4,044.66
99		(2"x4") Wood Studs @ 16" O.C. (71 EA, 674 LF)	SF	884	5%	928	\$ 1.35	\$ 1,253.07	0.017	\$ 60.00	\$ 1.02	\$ 946.76	\$	\$ 2,199.83
100		(2"x4") Top Plate	LF	186	5%	195	\$ 1.35	\$ 263.66	0.017	\$ 60.00	\$ 1.02	\$ 199.21	\$	\$ 462.86
101		(2"x4") Bottom Plate	LF	93	5%	98	\$ 1.35	\$ 131.83	0.017	\$ 60.00	\$ 1.02	\$ 99.60	\$	\$ 231.43
102		Sealant (As Required)	LF	372	5%	391	\$ 0.25	\$ 97.65	0.010	\$ 60.00	\$ 0.60	\$ 234.36	\$	\$ 332.01
<b>Wall Type "Garage Separation Wall" As; (25 LF, 9'-6" H)</b>														
103		(5/8") Double Gypsum Board Type "X"	SF	713	5%	749	\$ 0.98	\$ 733.68	0.020	\$ 60.00	\$ 1.20	\$ 898.38	\$	\$ 1,632.06
104		(2"x4") Wood Studs @ 16" O.C. (20 EA, 188 LF)	SF	238	5%	250	\$ 1.35	\$ 337.37	0.017	\$ 60.00	\$ 1.02	\$ 254.90	\$	\$ 592.26
105		(2"x4") Top Plate	LF	50	5%	53	\$ 1.35	\$ 70.88	0.017	\$ 60.00	\$ 1.02	\$ 53.55	\$	\$ 124.43
106		(2"x4") Bottom Plate	LF	25	5%	26	\$ 1.35	\$ 35.44	0.017	\$ 60.00	\$ 1.02	\$ 26.78	\$	\$ 62.21
107		Sealant (As Required)	LF	100	5%	105	\$ 0.25	\$ 26.25	0.010	\$ 60.00	\$ 0.60	\$ 63.00	\$	\$ 89.25
<b>Wall Type "Exterior Wall" As; (77 LF, 9'-6" H)</b>														
108		(5/8") Double Gypsum Board Type "X"	SF	732	5%	769	\$ 0.98	\$ 753.23	0.020	\$ 60.00	\$ 1.20	\$ 922.32	\$	\$ 1,675.55
109		(2"x4") Wood Studs @ 16" O.C. (59 EA, 560 LF)	SF	732	5%	769	\$ 1.35	\$ 1,037.61	0.017	\$ 60.00	\$ 1.02	\$ 783.97	\$	\$ 1,821.58
110		R-21 Unfaced Batt Insulation	SF	732	5%	769	\$ 0.88	\$ 676.37	0.010	\$ 60.00	\$ 0.60	\$ 461.16	\$	\$ 1,137.53
111		1/2" Plywood Sheathing	SF	732	5%	769	\$ 1.02	\$ 783.97	0.020	\$ 60.00	\$ 1.20	\$ 922.32	\$	\$ 1,706.29
112		(2"x4") Top Plate	LF	154	5%	162	\$ 1.35	\$ 218.30	0.017	\$ 60.00	\$ 1.02	\$ 164.93	\$	\$ 383.23
113		(2"x4") Bottom Plate	LF	77	5%	81	\$ 1.35	\$ 109.15	0.017	\$ 60.00	\$ 1.02	\$ 82.47	\$	\$ 191.61
114		Sealant (As Required)	LF	308	5%	323	\$ 0.25	\$ 80.85	0.010	\$ 60.00	\$ 0.60	\$ 194.04	\$	\$ 274.89
<b>First Floor</b>														
<b>Wall Type "Stud Wall" As; (70 LF, 9'-6" H)</b>														
115		(5/8") Gypsum Board Type "X"	SF	1330	5%	1397	\$ 0.98	\$ 1,368.57	0.020	\$ 60.00	\$ 1.20	\$ 1,675.80	\$	\$ 3,044.37
116		(2"x4") Wood Studs @ 16" O.C. (54 EA, 510 LF)	SF	665	5%	698	\$ 1.35	\$ 942.64	0.017	\$ 60.00	\$ 1.02	\$ 712.22	\$	\$ 1,654.85
117		(2"x4") Top Plate	LF	140	5%	147	\$ 1.35	\$ 198.45	0.017	\$ 60.00	\$ 1.02	\$ 149.94	\$	\$ 348.39
118		(2"x4") Bottom Plate	LF	70	5%	74	\$ 1.35	\$ 99.23	0.017	\$ 60.00	\$ 1.02	\$ 74.97	\$	\$ 174.20
119		Sealant (As Required)	LF	280	5%	294	\$ 0.25	\$ 73.50	0.010	\$ 60.00	\$ 0.60	\$ 176.40	\$	\$ 249.90
<b>Wall Type "Stud Wall" As; (5 LF, 9'-6" H)</b>														
120		(5/8") Gypsum Board Type "X"	SF	95	5%	100	\$ 0.98	\$ 97.76	0.020	\$ 60.00	\$ 1.20	\$ 119.70	\$	\$ 217.46
121		(2"x6") Wood Studs @ 16" O.C. (5 EA, 45 LF)	SF	48	5%	50	\$ 2.35	\$ 118.44	0.017	\$ 60.00	\$ 1.02	\$ 51.41	\$	\$ 169.85
122		(2"x6") Top Plate	LF	10	5%	11	\$ 2.35	\$ 24.68	0.017	\$ 60.00	\$ 1.02	\$ 10.71	\$	\$ 35.39
123		(2"x6") Bottom Plate	LF	5	5%	5	\$ 2.35	\$ 12.34	0.017	\$ 60.00	\$ 1.02	\$ 5.36	\$	\$ 17.69
124		Sealant (As Required)	LF	20	5%	21	\$ 0.25	\$ 5.25	0.010	\$ 60.00	\$ 0.60	\$ 12.60	\$	\$ 17.85
<b>Wall Type "Braced Wall" As; (31 LF, 9'-6" H)</b>														
125		(5/8") Gypsum Board Type "X"	SF	589	5%	618	\$ 0.98	\$ 606.08	0.020	\$ 60.00	\$ 1.20	\$ 742.14	\$	\$ 1,348.22
126		(2"x6") Wood Studs @ 16" O.C. (24 EA, 231LF)	SF	295	5%	310	\$ 2.35	\$ 727.91	0.017	\$ 60.00	\$ 1.02	\$ 315.95	\$	\$ 1,043.86
127		R-21 Unfaced Batt Insulation	SF	295	5%	310	\$ 0.88	\$ 272.58	0.010	\$ 60.00	\$ 0.60	\$ 185.85	\$	\$ 458.43
128		(2"x6") Top Plate	LF	62	5%	65	\$ 2.35	\$ 152.99	0.017	\$ 60.00	\$ 1.02	\$ 66.40	\$	\$ 219.39
129		(2"x6") Bottom Plate	LF	31	5%	33	\$ 2.35	\$ 76.49	0.017	\$ 60.00	\$ 1.02	\$ 33.20	\$	\$ 109.69
130		Sealant (As Required)	LF	124	5%	130	\$ 0.25	\$ 32.55	0.010	\$ 60.00	\$ 0.60	\$ 78.12	\$	\$ 110.67
<b>Wall Type "Exterior Wall" As; (119 LF, 9'-6" H)</b>														
131		(5/8") Double Gypsum Board Type "X"	SF	1131	5%	1188	\$ 0.98	\$ 1,163.80	0.020	\$ 60.00	\$ 1.20	\$ 1,425.06	\$	\$ 2,588.86
132		(2"x6") Wood Studs @ 16" O.C. (90 EA, 860 LF)	SF	1131	5%	1188	\$ 2.35	\$ 2,790.74	0.017	\$ 60.00	\$ 1.02	\$ 1,211.30	\$	\$ 4,002.04
133		R-21 Unfaced Batt Insulation	SF	1131	5%	1188	\$ 0.88	\$ 1,045.04	0.010	\$ 60.00	\$ 0.60	\$ 712.53	\$	\$ 1,757.57
134		1/2" Plywood Sheathing	SF	1131	5%	1188	\$ 1.02	\$ 1,211.30	0.020	\$ 60.00	\$ 1.20	\$ 1,425.06	\$	\$ 2,636.36
135		(2"x6") Top Plate	LF	238	5%	250	\$ 2.35	\$ 587.27	0.017	\$ 60.00	\$ 1.02	\$ 254.90	\$	\$ 842.16
136		(2"x6") Bottom Plate	LF	119	5%	125	\$ 2.35	\$ 293.63	0.017	\$ 60.00	\$ 1.02	\$ 127.45	\$	\$ 421.08
137		Sealant (As Required)	LF	476	5%	500	\$ 0.25	\$ 124.95	0.010	\$ 60.00	\$ 0.60	\$ 299.88	\$	\$ 424.83
<b>Second Floor</b>														
<b>Wall Type "Braced Wall" As; (31 LF, 9'-6" H)</b>														
138		(5/8") Gypsum Board Type "X"	SF	589	5%	618	\$ 0.98	\$ 606.08	0.020	\$ 60.00	\$ 1.20	\$ 742.14	\$	\$ 1,348.22
139		(2"x6") Wood Studs @ 16" O.C. (24 EA, 231LF)	SF	295	5%	310	\$ 2.35	\$ 727.91	0.017	\$ 60.00	\$ 1.02	\$ 315.95	\$	\$ 1,043.86
140		R-21 Unfaced Batt Insulation	SF	295	5%	310	\$ 0.88	\$ 272.58	0.010	\$ 60.00	\$ 0.60	\$ 185.85	\$	\$ 458.43
141		(2"x6") Top Plate	LF	62	5%	65	\$ 2.35	\$ 152.99	0.017	\$ 60.00	\$ 1.02	\$ 66.40	\$	\$ 219.39
142		(2"x6") Bottom Plate	LF	31	5%	33	\$ 2.35	\$ 76.49	0.017	\$ 60.00	\$ 1.02	\$ 33.20	\$	\$ 109.69
143		Sealant (As Required)	LF	124	5%	130	\$ 0.25	\$ 32.55	0.010	\$ 60.00	\$ 0.60	\$ 78.12	\$	\$ 110.67
<b>Wall Type "Stud Wall" As; (111 LF, 9'-6" H)</b>														
144		(5/8") Gypsum Board Type "X"	SF	2109	5%	2214	\$ 0.98	\$ 2,170.16	0.020	\$ 60.00	\$ 1.20	\$ 2,657.34	\$	\$ 4,827.50
145		(2"x4") Wood Studs @ 16" O.C. (84 EA, 802LF)	SF	1055	5%	1108	\$ 1.35	\$ 1,495.46	0.017	\$ 60.00	\$ 1.02	\$ 1,129.91	\$	\$ 2,625.37
146		(2"x4") Top Plate	LF	222	5%	233	\$ 1.35	\$ 314.69	0.017	\$ 60.00	\$ 1.02	\$ 237.76	\$	\$ 552.45
147		(2"x4") Bottom Plate	LF	111	5%	117	\$ 1.35	\$ 157.34	0.017	\$ 60.00	\$ 1.02	\$ 118.88	\$	\$ 276.22
148		Sealant (As Required)	LF	444	5%	466	\$ 0.25	\$ 116.55	0.010	\$ 60.00	\$ 0.60	\$ 279.72	\$	\$ 396.27
<b>Wall Type "Stud Wall" As; (3 LF, 9'-6" H)</b>														
149		(5/8") Gypsum Board Type "X"	SF	57	5%	60	\$ 0.98	\$ 58.65	0.020	\$ 60.00	\$ 1.20	\$ 71.82	\$	\$ 130.47
150		(2"x6") Wood Studs @ 16" O.C. (3 EA, 31LF)	SF	29	5%	30	\$ 2.35	\$ 71.56	0.017	\$ 60.00	\$ 1.02	\$ 31.06	\$	\$ 102.62
151		(2"x6") Top Plate	LF	6	5%	6	\$ 2.35	\$ 14.81	0.017	\$ 60.00	\$ 1.02	\$ 6.43	\$	\$ 21.23
152		(2"x6") Bottom Plate	LF	3	5%	3	\$ 2.35	\$ 7.40	0.017	\$ 60.00	\$ 1.02	\$ 3.21	\$	\$ 10.62
153		Sealant (As Required)	LF	12	5%	13	\$ 0.25	\$ 3.15	0.010	\$ 60.00	\$ 0.60	\$ 7.56	\$	\$ 10.71
<b>Wall Type "Exterior Wall" As; (106 LF, 9'-6" H)</b>														
154		(5/8") Double Gypsum Board Type "X"	SF	1007	5%	1057	\$ 0.98	\$ 1,036.20	0.020	\$ 60.00	\$ 1.20	\$ 1,268.82	\$	\$ 2,305.02
155		(2"x6") Wood Studs @ 16" O.C. (81 EA, 767 LF)	SF	1007	5%	1057	\$ 2.35	\$ 2,484.77	0.017	\$ 60.00	\$ 1.02	\$ 1,078.50	\$	\$ 3,563.27
156		R-21 Unfaced Batt Insulation	SF	1007	5%	1057	\$ 0.88	\$ 930.47	0.010	\$ 60.00	\$ 0.60	\$ 634.41	\$	\$ 1,564.88
157		1/2" Plywood Sheathing	SF	1007	5%	1057	\$ 1.02	\$ 1,078.50	0.020	\$ 60.00	\$ 1.20	\$ 1,268.82	\$	\$ 2,347.32
158		(2"x6") Top Plate	LF	212	5%	223	\$ 2.35	\$ 523.11	0.017	\$ 60.00	\$ 1.02	\$ 227.05	\$	\$ 750.16
159		(2"x6") Bottom Plate	LF	106	5%	111	\$ 2.35	\$ 261.56	0.017	\$ 60.00	\$ 1.02	\$ 113.53	\$	\$ 375.08
160		Sealant (As Required)	LF	424	5%	445	\$ 0.25	\$ 111.30	0.010	\$ 60.00	\$ 0.60	\$ 267.12	\$	\$ 378.42
<b>Third Floor</b>														
<b>Wall Type "KNEE Wall" As; (111 LF, 9'-6" H)</b>														
161		(5/8") Gypsum Board Type "X"	SF	24	5%	25	\$ 0.98	\$ 24.70	0.020	\$ 60.00	\$ 1.20	\$ 30.24	\$	\$ 54.94
162		(2"x4") Wood Studs @ 16" O.C. (4 EA, 12 LF)	SF	12	5%	13	\$ 1.35	\$ 17.01	0.017	\$ 60.00	\$ 1.02	\$ 12.85	\$	\$ 29.86
163		(2"x4") Top Plate	LF	8	5%	8	\$ 1.35	\$ 11.34	0.017	\$ 60.00	\$ 1.02	\$ 8.57	\$	\$ 19.91
164		(2"x4") Bottom Plate	LF	4	5%	4	\$ 1.35	\$ 5.67	0.017	\$ 60.00	\$ 1.02	\$ 4.28	\$	\$ 9.95
165		Sealant (As Required)	LF	16	5%	17	\$ 0.25	\$ 4.20	0.010	\$ 60.00	\$ 0.60	\$ 10.08	\$	\$ 14.28
<b>Wall Type "Stud Wall" As; (82 LF, 9'-6" H)</b>														
166		(5/8") Gypsum Board Type "X"	SF	1558	5%	1636	\$ 0.98	\$ 1,603.18	0.020	\$ 60.00	\$ 1.20	\$ 1,963.08	\$	\$ 3,566.26
167		(2"x4") Wood Studs @ 16" O.C. (63 EA, 595 LF)	SF	779	5%	818	\$ 1.35	\$ 1,104.23	0.017	\$ 60.00	\$ 1.02	\$ 834.31	\$	\$ 1,938.54
168		(2"x4") Top Plate	LF	164	5%	172	\$ 1.35	\$ 232.47	0.017	\$ 60.00	\$ 1.02	\$ 175.64	\$	\$ 408.11
169														

Project ID:	(Single Family Residence)
Location:	***** Seaside Heights, NJ
Scope of Work:	All Trades - GC
Date:	*****



Item #	Ref. Sheet #	Item Description	Unit	Quantity	Wastage	Quantity w/ Wastage	Unit Material Cost	Total Material Cost	Unit Manhour	Hourly Wage	Unit Labor Cost	Total Labor Cost	Sub Cost	Total Trade Cost
182		(5/8") Double Gypsum Board Type "X"	SF	760	5%	798	\$ 0.98	\$ 782.04	0.020	\$ 60.00	\$ 1.20	\$ 957.60		\$ 1,739.64
183		(2"x6") Wood Studs @ 16" O.C. (61 EA, 581 LF)	SF	760	5%	798	\$ 2.35	\$ 1,875.30	0.017	\$ 60.00	\$ 1.02	\$ 813.96		\$ 2,689.26
184		R-21 Unfaced Batt Insulation	SF	1007	5%	1057	\$ 0.88	\$ 930.47	0.010	\$ 60.00	\$ 0.60	\$ 634.41		\$ 1,564.88
185		1/2" Plywood Sheathing	SF	1007	5%	1057	\$ 1.02	\$ 1,078.50	0.020	\$ 60.00	\$ 1.20	\$ 1,268.82		\$ 2,347.32
186		(2"x6") Top Plate	LF	160	5%	168	\$ 2.35	\$ 394.80	0.017	\$ 60.00	\$ 1.02	\$ 171.36		\$ 566.16
187		(2"x6") Bottom Plate	LF	80	5%	84	\$ 2.35	\$ 197.40	0.017	\$ 60.00	\$ 1.02	\$ 85.68		\$ 283.08
188		Sealant (As Required)	LF	320	5%	336	\$ 0.25	\$ 84.00	0.010	\$ 60.00	\$ 0.60	\$ 201.60		\$ 285.60
		<b>Ceiling</b>												
		<b>Foundation</b>												
189		5/8" Painted Gypsum Ceiling Board	SF	596	5%	626	\$ 0.82	\$ 513.16	0.028	\$ 60.00	\$ 1.68	\$ 1,051.34		\$ 1,564.50
		<b>First Floor</b>												
190		5/8" Painted Gypsum Ceiling Board	SF	840	5%	882	\$ 0.82	\$ 723.24	0.028	\$ 60.00	\$ 1.68	\$ 1,481.76		\$ 2,205.00
		<b>Second Floor</b>												
191		5/8" Painted Gypsum Ceiling Board	SF	725	5%	761	\$ 0.82	\$ 624.23	0.028	\$ 60.00	\$ 1.68	\$ 1,278.90		\$ 1,903.13
		<b>Third Floor</b>												
192		5/8" Painted Gypsum Ceiling Board	SF	412	5%	433	\$ 0.82	\$ 354.73	0.028	\$ 60.00	\$ 1.68	\$ 726.77		\$ 1,081.50
		<b>Wall Finishes</b>												
		<b>Foundation</b>												
193		Paint @ Wall	SF	1986	5%	2085	\$ 0.82	\$ 1,709.95	0.020	\$ 60.00	\$ 1.20	\$ 2,502.36		\$ 4,212.31
		<b>First Floor</b>												
194		Paint @ Wall	SF	2682	5%	2816	\$ 0.82	\$ 2,309.20	0.020	\$ 60.00	\$ 1.20	\$ 3,379.32		\$ 5,688.52
195		Subway Tile Back Splash	SF	38	5%	40	\$ 9.32	\$ 371.87	0.048	\$ 60.00	\$ 2.88	\$ 114.91		\$ 486.78
196		Wall Tile @ Bath	SF	196	5%	206	\$ 4.58	\$ 942.56	0.092	\$ 60.00	\$ 5.52	\$ 1,136.02		\$ 2,078.58
		<b>Second Floor</b>												
197		Paint @ Wall	SF	2898	5%	3043	\$ 0.82	\$ 2,495.18	0.020	\$ 60.00	\$ 1.20	\$ 3,651.48		\$ 6,146.66
198		Wall Tile @ Bath	SF	436	5%	458	\$ 4.58	\$ 2,096.72	0.092	\$ 60.00	\$ 5.52	\$ 2,527.06		\$ 4,623.78
		<b>Third Floor</b>												
199		Paint @ Wall	SF	2380	5%	2499	\$ 0.82	\$ 2,049.18	0.020	\$ 60.00	\$ 1.20	\$ 2,998.80		\$ 5,047.98
200		Wall Tile @ Bath	SF	210	5%	221	\$ 4.58	\$ 1,009.89	0.092	\$ 60.00	\$ 5.52	\$ 1,217.16		\$ 2,227.05
		<b>Flooring</b>												
		<b>Foundation</b>												
201		Paver @ Driveway	SF	224	5%	235	\$ 6.52	\$ 1,533.50	0.045	\$ 60.00	\$ 2.70	\$ 635.04		\$ 2,168.54
202		Sealed Concrete Floor	SF	444	5%	466	\$ 0.25	\$ 116.55	0.010	\$ 60.00	\$ 0.60	\$ 279.72		\$ 396.27
203		Vinyl Flooring	SF	115	5%	121	\$ 5.12	\$ 618.24	0.085	\$ 60.00	\$ 5.10	\$ 615.83		\$ 1,234.07
		<b>First Floor</b>												
204		Vinyl Flooring	SF	761	5%	799	\$ 5.12	\$ 4,091.14	0.085	\$ 60.00	\$ 5.10	\$ 4,075.16		\$ 8,166.29
205		Tile Flooring @ Bath	SF	46	5%	48	\$ 4.58	\$ 221.21	0.092	\$ 60.00	\$ 5.52	\$ 266.62		\$ 487.83
		<b>Second Floor</b>												
206		Vinyl Flooring	SF	562	5%	590	\$ 5.12	\$ 3,021.31	0.085	\$ 60.00	\$ 5.10	\$ 3,009.51		\$ 6,030.82
207		Tile Flooring @ Bath	SF	112	5%	118	\$ 4.58	\$ 538.61	0.092	\$ 60.00	\$ 5.52	\$ 649.15		\$ 1,187.76
208		Tile Flooring @ Laundry	SF	17	5%	18	\$ 4.58	\$ 81.75	0.092	\$ 60.00	\$ 5.52	\$ 98.53		\$ 180.29
		<b>Third Floor</b>												
209		Vinyl Flooring	SF	473	5%	497	\$ 5.12	\$ 2,542.85	0.085	\$ 60.00	\$ 5.10	\$ 2,532.92		\$ 5,075.76
210		Tile Flooring @ Bath	SF	46	5%	48	\$ 4.58	\$ 221.21	0.092	\$ 60.00	\$ 5.52	\$ 266.62		\$ 487.83
		<b>Wall Base</b>												
		<b>Foundation</b>												
211		Rubber Base	LF	107	5%	112	\$ 1.85	\$ 207.85	0.022	\$ 60.00	\$ 1.32	\$ 148.30		\$ 356.15
212		5-1/2" Colonial Base Molding (White)	LF	119	5%	125	\$ 1.48	\$ 184.93	0.025	\$ 60.00	\$ 1.50	\$ 187.43		\$ 372.35
		<b>First Floor</b>												
213		Tile Base @ Bath	LF	24	5%	25	\$ 2.85	\$ 71.82	0.056	\$ 60.00	\$ 3.36	\$ 84.67		\$ 156.49
214		5-1/2" Colonial Base Molding (White)	LF	240	5%	252	\$ 1.48	\$ 372.96	0.025	\$ 60.00	\$ 1.50	\$ 378.00		\$ 750.96
		<b>Second Floor</b>												
215		Tile Base @ Bath	LF	53	5%	56	\$ 2.85	\$ 158.60	0.056	\$ 60.00	\$ 3.36	\$ 186.98		\$ 345.59
216		5-1/2" Colonial Base Molding (White)	LF	253	5%	266	\$ 1.48	\$ 393.16	0.025	\$ 60.00	\$ 1.50	\$ 398.48		\$ 791.64
		<b>Third Floor</b>												
217		Tile Base @ Bath	LF	26	5%	27	\$ 2.85	\$ 77.81	0.056	\$ 60.00	\$ 3.36	\$ 91.73		\$ 169.53
218		5-1/2" Colonial Base Molding (White)	LF	220	5%	231	\$ 1.48	\$ 341.88	0.025	\$ 60.00	\$ 1.50	\$ 346.50		\$ 688.38
		<b>Exterior Finishes</b>												
219		(1'-4"x0'-8") Smart Flood Vent	EA	6	0%	6	\$ 155.10	\$ 930.60	1.420	\$ 60.00	\$ 85.20	\$ 511.20		\$ 1,441.80
220		6" Azek Trim	LF	97	5%	102	\$ 0.95	\$ 96.76	0.028	\$ 60.00	\$ 1.68	\$ 171.11		\$ 267.87
221		6" Azek Trim Board	LF	124	5%	130	\$ 1.10	\$ 143.22	0.038	\$ 60.00	\$ 2.28	\$ 296.86		\$ 440.08
222		Certain Cedar Impression Siding	SF	230	5%	242	\$ 6.20	\$ 1,497.30	0.085	\$ 60.00	\$ 5.10	\$ 1,231.65		\$ 2,728.95
223		Double 4 Vinyl Siding	SF	3164	5%	3322	\$ 6.20	\$ 20,597.64	0.085	\$ 60.00	\$ 5.10	\$ 16,943.22		\$ 37,540.86
224		Finished Cement Board Panel	SF	1043	5%	1095	\$ 4.20	\$ 4,599.63	0.085	\$ 60.00	\$ 5.10	\$ 5,585.27		\$ 10,184.90
225		Building Paper	SF	4437	5%	4659	\$ 0.25	\$ 1,164.71	0.015	\$ 60.00	\$ 0.90	\$ 4,192.97		\$ 5,357.68
226		Flashing AN Sealant	LF	141	5%	148	\$ 0.25	\$ 37.01	0.010	\$ 60.00	\$ 0.60	\$ 88.83		\$ 125.84
		<b>Opening Finishes</b>												
227		White Paint @ Doors W/ Frames	SF	4222	5%	4433	\$ 0.48	\$ 2,127.89	0.015	\$ 60.00	\$ 0.90	\$ 3,989.79		\$ 6,117.68
228		3-1/2 Colonial Casing Around Door White Paint	LF	580	5%	609	\$ 0.70	\$ 426.30	0.018	\$ 60.00	\$ 1.08	\$ 657.72		\$ 1,084.02
229		3-1/2 Colonial Casing Around Window White Paint	LF	387	5%	406	\$ 0.70	\$ 284.45	0.018	\$ 60.00	\$ 1.08	\$ 438.86		\$ 723.30
		<b>Subtotal (Finishes)</b>						\$ 105,628				\$ 108,657		\$ 214,285

DIVISION 10- SPECIALTIES														
		<b>First Floor</b>												
230		Granite Countertop @ Kitchen	SF	21	5%	22	\$ 85.00	\$ 1,874.25	0.233	\$ 60.00	\$ 13.98	\$ 308.26		\$ 2,182.51
231		Granite Countertop @ Lavatory	SF	6	5%	6	\$ 85.00	\$ 510.00	0.233	\$ 60.00	\$ 13.98	\$ 88.07		\$ 623.57
232		(3'-0"x5'-0") Kitchen Island	EA	1	0%	1	\$ 4,585.00	\$ 4,585.00	8.650	\$ 60.00	\$ 519.00	\$ 519.00		\$ 5,104.00
		(3'-0"x5'-0") Glass Shower Compartment	EA	1	0%	1	\$ 4,585.00	\$ 4,585.00	8.650	\$ 60.00	\$ 519.00	\$ 519.00		\$ 5,104.00
		<b>Bathroom Accessories</b>												
233		Mirror	EA	1	0%	1	\$ 148.66	\$ 148.66	0.720	\$ 60.00	\$ 43.20	\$ 43.20		\$ 191.86
234		Coat Hook	EA	1	0%	1	\$ 35.65	\$ 35.65	0.230	\$ 60.00	\$ 13.80	\$ 13.80		\$ 49.45
235		Soap Dispenser	EA	1	0%	1	\$ 41.65	\$ 41.65	0.300	\$ 60.00	\$ 18.00	\$ 18.00		\$ 59.65
236		Tissue Holder	EA	1	0%	1	\$ 48.98	\$ 48.98	0.320	\$ 60.00	\$ 19.20	\$ 19.20		\$ 68.18
237		(18" H) Grab Bar	EA	1	0%	1	\$ 29.65	\$ 29.65	0.320	\$ 60.00	\$ 19.20	\$ 19.20		\$ 48.85
238		(36" H) Grab Bar	EA	1	0%	1	\$ 38.95	\$ 38.95	0.398	\$ 60.00	\$ 23.88	\$ 23.88		\$ 62.83
239		(42" H) Grab Bar	EA	1	0%	1	\$ 45.00	\$ 45.00	0.420	\$ 60.00	\$ 25.20	\$ 25.20		\$ 70.20
		<b>Second Floor</b>												
240		(60"x36") Shower Compartment	EA	1	0%	1	\$ -	\$ -	0.000	\$ -	\$ -	\$ -		\$ -
241		Granite Countertop @ Lavatory	SF											

Project ID:	(Single Family Residence)
Location:	***** Seaside Heights, NJ
Scope of Work:	All Trades - GC
Date:	*****



Item #	Ref. Sheet #	Item Description	Unit	Quantity	Wastage	Quantity w/ Wastage	Unit Material Cost	Total Material Cost	Unit Manhour	Hourly Wage	Unit Labor Cost	Total Labor Cost	Sub Cost	Total Trade Cost
255		(36" H) Grab Bar	EA	1	0%	1	\$ 38.95	\$ 38.95	0.398	\$ 60.00	\$ 23.88	\$ 23.88	\$ 62.83	
256		(42" H) Grab Bar	EA	1	0%	1	\$ 45.00	\$ 45.00	0.420	\$ 60.00	\$ 25.20	\$ 25.20	\$ 70.20	
<b>Subtotal (Equipment)</b>								<b>\$ 23,879</b>			<b>\$ 3,283</b>		<b>\$ 27,162</b>	
<b>DIVISION 11- EQUIPMENT</b>														
<b>First Floor</b>														
257	A4-A6	Refrigerator	EA	1	0%	1	\$ 1,400.00	\$ 1,400.00	1.500	\$ 60.00	\$ 90.00	\$ 90.00	\$ 1,490.00	
258		Dishwasher	EA	1	0%	1	\$ 368.32	\$ 368.32	1.500	\$ 60.00	\$ 90.00	\$ 90.00	\$ 458.32	
259		Stove	EA	1	0%	1	\$ 1,488.00	\$ 1,488.00	1.980	\$ 60.00	\$ 118.80	\$ 118.80	\$ 1,606.80	
<b>Second Floor</b>														
260		Washer/Dryer	EA	1	0%	1	\$ 1,258.00	\$ 1,258.00	2.350	\$ 60.00	\$ 141.00	\$ 141.00	\$ 1,399.00	
<b>Subtotal (Equipment)</b>								<b>\$ 4,514</b>			<b>\$ 440</b>		<b>\$ 4,954</b>	
<b>DIVISION 22- PLUMBING</b>														
<b>Plumbing Fixtures</b>														
<b>First Floor</b>														
261		Allowance For Pipes & Fittings	SF	942	5%	989	\$ -	\$ -	0.000	\$ -	\$ -	\$ -	\$ 1,315.60	
262		Showerhead W/ Drain	EA	1	0%	1	\$ 1,499.00	\$ 1,499.00	2.860	\$ 60.00	\$ 171.60	\$ 171.60	\$ 1,670.60	
263		Lavatory	EA	1	0%	1	\$ 485.60	\$ 485.60	2.200	\$ 60.00	\$ 132.00	\$ 132.00	\$ 617.60	
264		Two Compartment Kitchen Sink	EA	1	0%	1	\$ 962.00	\$ 962.00	1.200	\$ 60.00	\$ 72.00	\$ 72.00	\$ 1,034.00	
265		Water Closet	EA	1	0%	1	\$ 1,144.00	\$ 1,144.00	3.200	\$ 60.00	\$ 192.00	\$ 192.00	\$ 1,336.00	
<b>Second Floor</b>														
266	A4-A6	Allowance For Pipes & Fittings	SF	834	5%	876	\$ -	\$ -	0.000	\$ -	\$ -	\$ -	\$ 1,315.60	
267		(36"x60") Bath Tub W/ Drain	EA	1	0%	1	\$ 3,510.12	\$ 3,510.12	5.200	\$ 60.00	\$ 312.00	\$ 312.00	\$ 3,822.12	
268		Lavatory	EA	1	0%	1	\$ 485.60	\$ 485.60	2.200	\$ 60.00	\$ 132.00	\$ 132.00	\$ 617.60	
269		Water Closet	EA	1	0%	1	\$ 1,144.00	\$ 1,144.00	3.200	\$ 60.00	\$ 192.00	\$ 192.00	\$ 1,336.00	
<b>Third Floor</b>														
270		Allowance For Pipes & Fittings	SF	510	5%	536	\$ -	\$ -	0.000	\$ -	\$ -	\$ -	\$ 1,315.60	
271		Showerhead W/ Drain	EA	1	0%	1	\$ 1,499.00	\$ 1,499.00	2.860	\$ 60.00	\$ 171.60	\$ 171.60	\$ 1,670.60	
272		Lavatory	EA	1	0%	1	\$ 485.60	\$ 485.60	2.200	\$ 60.00	\$ 132.00	\$ 132.00	\$ 617.60	
273		Water Closet	EA	1	0%	1	\$ 1,144.00	\$ 1,144.00	3.200	\$ 60.00	\$ 192.00	\$ 192.00	\$ 1,336.00	
<b>Subtotal (Plumbing)</b>								<b>\$ 12,359</b>			<b>\$ 1,699</b>		<b>\$ 18,005</b>	
<b>DIVISION 25- HVAC/MECHANICAL</b>														
<b>HVAC Fixtures</b>														
<b>Foundation</b>														
274		Allowance For Conduits And Supply	SF	942	5%	989	\$ -	\$ -	0.000	\$ -	\$ -	\$ -	\$ 1,315.60	
274		Exhaust Fan	SF	23	5%	24	\$ 195.15	\$ 4,712.87	2.860	\$ 60.00	\$ 171.60	\$ 4,144.14	\$ 8,857.01	
275		Tankless Gas Hot Water Heater	EA	1	0%	1	\$ 3,828.00	\$ 3,828.00	8.200	\$ 60.00	\$ 492.00	\$ 492.00	\$ 4,320.00	
<b>Second Floor</b>														
276	A4-A6	Allowance For Conduits And Supply	SF	834	5%	876	\$ -	\$ -	0.000	\$ -	\$ -	\$ -	\$ 1,315.60	
276		Exhaust Fan	EA	1	0%	1	\$ 195.15	\$ 195.15	2.860	\$ 60.00	\$ 171.60	\$ 171.60	\$ 366.75	
<b>Third Floor</b>														
277		Allowance For Conduits And Supply	SF	510	5%	536	\$ -	\$ -	0.000	\$ -	\$ -	\$ -	\$ 1,315.60	
277		Exhaust Fan	EA	1	0%	1	\$ 195.15	\$ 195.15	2.860	\$ 60.00	\$ 171.60	\$ 171.60	\$ 366.75	
<b>Subtotal (HVAC/Mechanical)</b>								<b>\$ 8,541</b>			<b>\$ 4,636</b>		<b>\$ 14,493</b>	
<b>DIVISION 26- ELECTRICAL</b>														
<b>Wiring Allowance</b>														
278		Allowance For Wires	LF	7968	5%	8366	\$ 1.50	\$ 12,549.60	0.012	\$ 60.00	\$ 0.72	\$ 6,023.81	\$ 18,573.41	
279		Allowance For Conduits	LF	2656	5%	2789	\$ 1.98	\$ 5,521.82	0.042	\$ 60.00	\$ 2.52	\$ 7,027.78	\$ 12,549.60	
<b>Power Fixtures</b>														
<b>Foundation</b>														
280		3-Way Switch	EA	3	0%	3	\$ 25.32	\$ 75.96	0.200	\$ 60.00	\$ 12.00	\$ 36.00	\$ 112	
281		4-Way Switch	EA	3	0%	3	\$ 42.35	\$ 127.05	0.200	\$ 60.00	\$ 12.00	\$ 36.00	\$ 163	
282		Duplex Outlet	EA	1	0%	1	\$ 28.15	\$ 28.15	0.320	\$ 60.00	\$ 19.20	\$ 19.20	\$ 47.35	
283		Single Pole Switch	EA	3	0%	3	\$ 21.20	\$ 63.60	0.320	\$ 60.00	\$ 19.20	\$ 57.60	\$ 121.20	
284		GFI Duplex Receptacle	EA	2	0%	2	\$ 32.25	\$ 64.50	0.320	\$ 60.00	\$ 19.20	\$ 38.40	\$ 102.90	
285		GFI Weatherproof Duplex Receptacle	EA	2	0%	2	\$ 35.25	\$ 70.50	0.320	\$ 60.00	\$ 19.20	\$ 38.40	\$ 108.90	
<b>First Floor</b>														
286		Single Pole Switch	EA	10	0%	10	\$ 21.20	\$ 212.00	0.320	\$ 60.00	\$ 19.20	\$ 192.00	\$ 404.00	
287		3-Way Switch	EA	6	0%	6	\$ 25.32	\$ 151.92	0.200	\$ 60.00	\$ 12.00	\$ 72.00	\$ 224	
288		Duplex Outlet	EA	10	0%	10	\$ 28.15	\$ 281.50	0.320	\$ 60.00	\$ 19.20	\$ 192.00	\$ 473.50	
289		GFI Duplex Receptacle	EA	11	0%	11	\$ 32.25	\$ 354.75	0.320	\$ 60.00	\$ 19.20	\$ 211.20	\$ 565.95	
290		GFI Weatherproof Duplex Receptacle	EA	1	0%	1	\$ 35.25	\$ 35.25	0.320	\$ 60.00	\$ 19.20	\$ 19.20	\$ 54.45	
<b>Second Floor</b>														
291		3-Way Switch	EA	4	0%	4	\$ 25.32	\$ 101.28	0.200	\$ 60.00	\$ 12.00	\$ 48.00	\$ 149	
292		Single Pole Switch	EA	10	0%	10	\$ 21.20	\$ 212.00	0.320	\$ 60.00	\$ 19.20	\$ 192.00	\$ 404.00	
293		Duplex Outlet	EA	12	0%	12	\$ 28.15	\$ 337.80	0.320	\$ 60.00	\$ 19.20	\$ 230.40	\$ 568.20	
294		GFI Duplex Receptacle	EA	3	0%	3	\$ 32.25	\$ 96.75	0.320	\$ 60.00	\$ 19.20	\$ 57.60	\$ 154.35	
295		GFI Weatherproof Duplex Receptacle	EA	1	0%	1	\$ 35.25	\$ 35.25	0.320	\$ 60.00	\$ 19.20	\$ 19.20	\$ 54.45	
<b>Third Floor</b>														
296		3-Way Switch	EA	6	0%	6	\$ 25.32	\$ 151.92	0.200	\$ 60.00	\$ 12.00	\$ 72.00	\$ 224	
297		Single Pole Switch	EA	4	0%	4	\$ 21.20	\$ 84.80	0.320	\$ 60.00	\$ 19.20	\$ 76.80	\$ 161.60	
298		Duplex Outlet	EA	13	0%	13	\$ 28.15	\$ 365.95	0.320	\$ 60.00	\$ 19.20	\$ 249.60	\$ 615.55	
299		GFI Duplex Receptacle	EA	1	0%	1	\$ 32.25	\$ 32.25	0.320	\$ 60.00	\$ 19.20	\$ 19.20	\$ 51.45	
300		GFI Weatherproof Duplex Receptacle	EA	1	0%	1	\$ 35.25	\$ 35.25	0.320	\$ 60.00	\$ 19.20	\$ 19.20	\$ 54.45	
<b>Lighting Fixtures</b>														
<b>Foundation</b>														
301		Ceiling Mounted Light Fixtures	EA	2	0%	2	\$ 175.20	\$ 350.40	0.852	\$ 60.00	\$ 51.12	\$ 102.24	\$ 452.64	
302		Recessed Light Fixtures	EA	7	0%	7	\$ 82.00	\$ 574.00	0.852	\$ 60.00	\$ 51.12	\$ 357.84	\$ 931.84	
302		Wall Mounted Light Fixtures	EA	1	0%	1	\$ 175.20	\$ 175.20	0.852	\$ 60.00	\$ 51.12	\$ 51.12	\$ 226.32	
<b>First Floor</b>														
303		Recessed Light Fixtures	EA	13	0%	13	\$ 82.00	\$ 1,066.00	0.852	\$ 60.00	\$ 51.12	\$ 664.56	\$ 1,730.56	
304		Ceiling Mounted Light Fixtures	EA	4	0%	4	\$ 175.20	\$ 700.80	0.852	\$ 60.00	\$ 51.12	\$ 204.48	\$ 905.28	
305		Smoke Detector W/ Battery	EA	1	0%	1	\$ 75.20	\$ 75.20	0.320	\$ 60.00	\$ 19.20	\$ 19.20	\$ 94.40	
306		Smoke Detector Carbon Monoxide	EA	1	0%	1	\$ 126.32	\$ 126.32	0.320	\$ 60.00	\$ 19.20	\$ 19.20	\$ 145.52	
<b>Second Floor</b>														
307		Recessed Light Fixtures	EA	4	0%	4	\$ 82.00	\$ 328.00	0.852	\$ 60.00	\$ 51.12	\$ 204.48	\$ 532.48	
308		Wall Mounted Light Fixtures	EA	4	0%	4	\$ 175.20	\$ 700.80	0.852	\$ 60.00	\$ 51.12	\$ 204.48	\$ 905.28	
309		Ceiling Mounted Light Fixtures	EA	4	0%	4	\$ 175.20	\$ 700.80	0.852	\$ 60.00	\$ 51.12	\$ 204.48	\$ 905.28	
310		Smoke Detector Carbon Monoxide	EA	2	0%	2	\$ 126.32	\$ 252.64	0.320	\$ 60.00	\$ 19.20	\$ 38.40	\$ 291.04	
311		Smoke Detector W/ Battery	EA	2	0%	2	\$ 75.20	\$ 150.40	0.320	\$ 60.00	\$ 19.20	\$ 38.40	\$ 188.80	
<b>Third Floor</b>														
312		Recessed Light Fixtures	EA	4	0%	4	\$ 82.00	\$ 328.00	0.852	\$ 60.00	\$ 51.12	\$ 204.48	\$ 532.48	
313		Wall Mounted Light Fixtures	EA	2	0%	2	\$ 175.20	\$ 350.40	0.852	\$ 60.00	\$ 51.12	\$ 102.24	\$ 452.64	
314		Ceiling Mounted Light Fixtures	EA	2	0%	2	\$ 175.20	\$ 350.40	0.852	\$ 60.00	\$ 51.12	\$ 102.24	\$ 452.64	
315		Smoke Detector Carbon Monoxide	EA	1	0%	1	\$ 126.32	\$ 126.32	0.320	\$ 60.00	\$ 19.20	\$ 19.20	\$ 145.52	
316		Smoke Detector W/ Battery	EA	1	0%	1	\$ 75.20	\$ 75.20	0.320	\$ 60.00	\$ 19.20	\$ 19.20	\$ 94.40	
<b>Subtotal (Electrical)</b>								<b>\$ 27,421</b>			<b>\$ 17,504</b>		<b>\$ 44,925</b>	

Building Data Summary

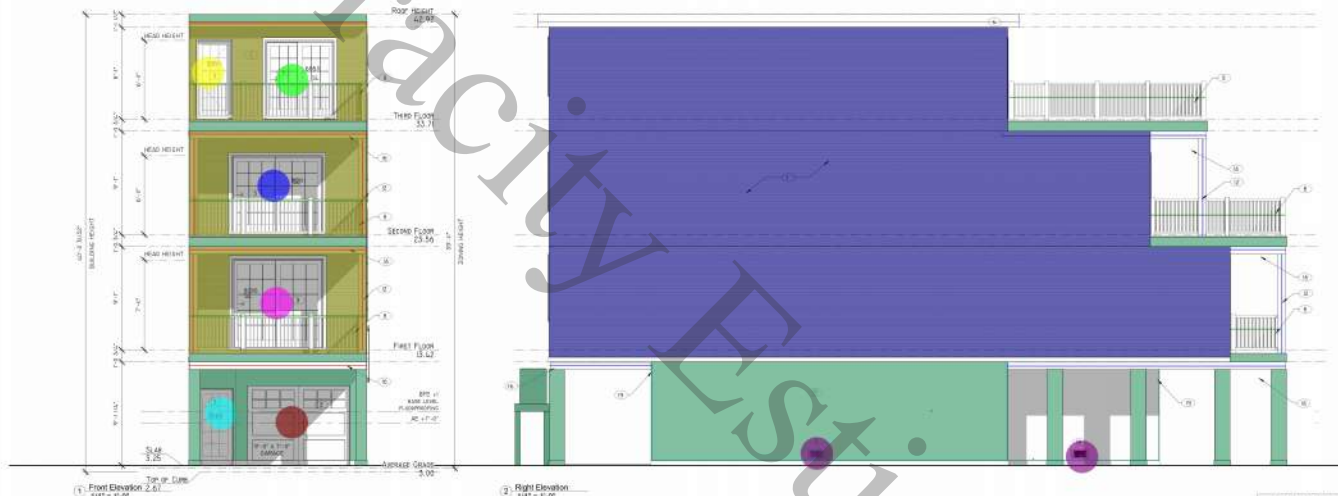
Project ID:	(Single Family Residence)
Location:	***** Seaside Heights, NJ
Scope of Work:	All Trades - GC
Date:	*****



Item #	Ref. Sheet #	Item Description	Unit	Quantity	Wastage	Quantity w/ Wastage	Unit Material Cost	Total Material Cost	Unit Manhour	Hourly Wage	Unit Labor Cost	Total Labor Cost	Sub Cost	Total Trade Cost	
													PROJECTED COST	\$ 561,798	
													INSURANCE	3%	\$ 16,854
													CONTINGENCY	5%	\$ 28,090
													OVERHEAD AND PROFIT	15%	\$ 84,270
													TAX	0.00%	\$ -
													SUGGESTED BID	\$ 691,011	

- Note:**
1. Please verify the equipment's and their prices with owner.
  2. Online sources are used for pricing.
  3. Prices can vary depending upon field conditions.

Veracity Estimating



NO GLAZING PERMITTED WHERE LESS THAN 4'-0" TO PROPERTY LINE  
NO ROOF OVERHANG PERMITTED  
NO FINISHES PERMITTED

- Certain Cedar Impression Siding
- Double 4 Vinyl Siding
- 6" Azek Trim
- (6'-0"x7'-0") Silver Line Screen Door W/ Frame
- (3'-0"x7'-0") Silver Line Window W/ Frame
- (7'-0"x8'-0") Silver Line Window W/ Frame
- (8'-0"x8'-0") Silver Line Window W/ Frame
- (3'-0"x6'-8") Insulated Exterior Door W/ Frame
- (9'-0"x7'-0") Garage Door
- White Vinyl Railing 36" High
- Finished Cement Board Panel
- (1'-4"x0'-8") Smart Flood Vent
- Flashing And Sealant
- 6" Azek Trim Board

229.2 SQ FT	■
1494.8 SQ FT	■
96.9 FT	■
1.0 EA	●
1.0 EA	●
1.0 EA	●
1.0 EA	●
1.0 EA	●
1.0 EA	●
1.0 EA	●
80.3 FT	■
467.2 SQ FT	■
2.0 EA	●
70.3 FT	■
60.6 FT	■

- ELEVATION NOTES:**
1. REFER TO ALL OTHER DRAWINGS FOR DIMENSIONS AND MATERIALS.
  2. REFER TO ALL OTHER DRAWINGS FOR DIMENSIONS AND MATERIALS.
  3. REFER TO ALL OTHER DRAWINGS FOR DIMENSIONS AND MATERIALS.
  4. REFER TO ALL OTHER DRAWINGS FOR DIMENSIONS AND MATERIALS.
  5. REFER TO ALL OTHER DRAWINGS FOR DIMENSIONS AND MATERIALS.
  6. REFER TO ALL OTHER DRAWINGS FOR DIMENSIONS AND MATERIALS.
  7. REFER TO ALL OTHER DRAWINGS FOR DIMENSIONS AND MATERIALS.
  8. REFER TO ALL OTHER DRAWINGS FOR DIMENSIONS AND MATERIALS.
  9. REFER TO ALL OTHER DRAWINGS FOR DIMENSIONS AND MATERIALS.
  10. REFER TO ALL OTHER DRAWINGS FOR DIMENSIONS AND MATERIALS.
  11. REFER TO ALL OTHER DRAWINGS FOR DIMENSIONS AND MATERIALS.
  12. REFER TO ALL OTHER DRAWINGS FOR DIMENSIONS AND MATERIALS.
  13. REFER TO ALL OTHER DRAWINGS FOR DIMENSIONS AND MATERIALS.
  14. REFER TO ALL OTHER DRAWINGS FOR DIMENSIONS AND MATERIALS.
  15. REFER TO ALL OTHER DRAWINGS FOR DIMENSIONS AND MATERIALS.

Veracity Estimating



1) Rear Elevation  
1/4" = 1'-0"

2) Left Elevation  
1/4" = 1'-0"

● Double 4 Vinyl Siding	1668.4 SQ FT
● (3'-0"x5'-0") Double Hung Silver Line Window W/ Frame	3.0 EA
● (1'-4"x0'-8") Smart Flood Vent	4.0 EA
● Finished Cement Board Panel	578.2 SQ FT
■ 6" Azek Trim Board	62.9 FT
■ White Vinyl Railing 36"High	33.7 FT
● (3'-0"x3'-0") Silver Line Window W/ Frame	1.0 EA
● (2'-8"x4'-0") Silver Line Window W/ Frame	4.0 EA
● (3'-0"x4'-0") Silver Line Window W/ Frame	4.0 EA
● (4'-0"x2'-0") Silver Line Window W/ Frame	3.0 EA
● (3'-0"x5'-6") Silver Line Window W/ Frame	2.0 EA
● (2'-0"x3'-6") Silver Line Window W/ Frame	1.0 EA
● (3'-0"x8'-8") Insulated Exterior Door W/ Frame	1.0 EA
■ Flashing And Sealant	70.5 FT

GLAZING IN SLOPED AREA - 10% OF RAIL AREA - 10% OF 10% 2" x 1/2" x 1/2" = 0.1%

1/2" THICK 1" FIBER REINFORCED GLASS FIBER CEMENT FIBER W/ JOINT AT WALL CLOSER THAN 5 FEET TO PROPERTY LINE

NO ROOF OVERHANG PERMITTED

- ELEVATION NOTES**
1. ALL WORK SHALL BE DONE IN ACCORDANCE WITH THE LATEST EDITIONS OF THE INTERNATIONAL RESIDENTIAL CODE BOOK (IRC) AND THE INTERNATIONAL BUILDING CODE (IBC).
  2. ALL WORK SHALL BE DONE IN ACCORDANCE WITH THE LATEST EDITIONS OF THE INTERNATIONAL RESIDENTIAL CODE BOOK (IRC) AND THE INTERNATIONAL BUILDING CODE (IBC).
  3. ALL WORK SHALL BE DONE IN ACCORDANCE WITH THE LATEST EDITIONS OF THE INTERNATIONAL RESIDENTIAL CODE BOOK (IRC) AND THE INTERNATIONAL BUILDING CODE (IBC).
  4. ALL WORK SHALL BE DONE IN ACCORDANCE WITH THE LATEST EDITIONS OF THE INTERNATIONAL RESIDENTIAL CODE BOOK (IRC) AND THE INTERNATIONAL BUILDING CODE (IBC).
  5. ALL WORK SHALL BE DONE IN ACCORDANCE WITH THE LATEST EDITIONS OF THE INTERNATIONAL RESIDENTIAL CODE BOOK (IRC) AND THE INTERNATIONAL BUILDING CODE (IBC).
  6. ALL WORK SHALL BE DONE IN ACCORDANCE WITH THE LATEST EDITIONS OF THE INTERNATIONAL RESIDENTIAL CODE BOOK (IRC) AND THE INTERNATIONAL BUILDING CODE (IBC).
  7. ALL WORK SHALL BE DONE IN ACCORDANCE WITH THE LATEST EDITIONS OF THE INTERNATIONAL RESIDENTIAL CODE BOOK (IRC) AND THE INTERNATIONAL BUILDING CODE (IBC).
  8. ALL WORK SHALL BE DONE IN ACCORDANCE WITH THE LATEST EDITIONS OF THE INTERNATIONAL RESIDENTIAL CODE BOOK (IRC) AND THE INTERNATIONAL BUILDING CODE (IBC).
  9. ALL WORK SHALL BE DONE IN ACCORDANCE WITH THE LATEST EDITIONS OF THE INTERNATIONAL RESIDENTIAL CODE BOOK (IRC) AND THE INTERNATIONAL BUILDING CODE (IBC).
  10. ALL WORK SHALL BE DONE IN ACCORDANCE WITH THE LATEST EDITIONS OF THE INTERNATIONAL RESIDENTIAL CODE BOOK (IRC) AND THE INTERNATIONAL BUILDING CODE (IBC).
  11. ALL WORK SHALL BE DONE IN ACCORDANCE WITH THE LATEST EDITIONS OF THE INTERNATIONAL RESIDENTIAL CODE BOOK (IRC) AND THE INTERNATIONAL BUILDING CODE (IBC).
  12. ALL WORK SHALL BE DONE IN ACCORDANCE WITH THE LATEST EDITIONS OF THE INTERNATIONAL RESIDENTIAL CODE BOOK (IRC) AND THE INTERNATIONAL BUILDING CODE (IBC).
  13. ALL WORK SHALL BE DONE IN ACCORDANCE WITH THE LATEST EDITIONS OF THE INTERNATIONAL RESIDENTIAL CODE BOOK (IRC) AND THE INTERNATIONAL BUILDING CODE (IBC).
  14. ALL WORK SHALL BE DONE IN ACCORDANCE WITH THE LATEST EDITIONS OF THE INTERNATIONAL RESIDENTIAL CODE BOOK (IRC) AND THE INTERNATIONAL BUILDING CODE (IBC).
  15. ALL WORK SHALL BE DONE IN ACCORDANCE WITH THE LATEST EDITIONS OF THE INTERNATIONAL RESIDENTIAL CODE BOOK (IRC) AND THE INTERNATIONAL BUILDING CODE (IBC).



**VERACITY ESTIMATING**  
Construction Estimation Services

---

PROPOSED NEW RESIDENCE

ELEVATIONS

---

The 10 ARCHITECTURE LLC  
1000 S.W. 15TH AVENUE  
MIAMI, FL 33135  
TEL: 305.441.1000  
WWW.TEN10ARCH.COM  
COURT OF APPEALS # 10-0000



TEN 10 ARCHITECTURE  
ARCHITECTURE

---

DESIGNER	DATE
P.A.P.	05-07-2024
CHECKED	SCALE
D.M.W.	1/4" = 1'-0"
DWG. NO.	FILE NO.
A2	23-96







Veracity



**WELCOME ESTIMATING**  
 PLEASE REFER TO THE PROJECT MANUAL FOR THE MOST CURRENT AND COMPLETE LIST OF MATERIALS AND METHODS OF CONSTRUCTION.  
 ALL MATERIALS AND METHODS OF CONSTRUCTION SHALL BE AS SHOWN UNLESS OTHERWISE NOTED.  
 ALL DIMENSIONS SHALL BE TO FACE UNLESS OTHERWISE NOTED.  
 ALL FINISHES SHALL BE AS SHOWN UNLESS OTHERWISE NOTED.  
 ALL WORK SHALL BE IN ACCORDANCE WITH THE LATEST EDITIONS OF THE BUILDING CODES AND STANDARDS.  
 ALL WORK SHALL BE SUBJECT TO INSPECTION AND APPROVAL BY THE ARCHITECT.

**FLOOR PLAN REVISIONS**  
 1. AS SHOWN UNLESS OTHERWISE NOTED.  
 2. AS SHOWN UNLESS OTHERWISE NOTED.  
 3. AS SHOWN UNLESS OTHERWISE NOTED.  
 4. AS SHOWN UNLESS OTHERWISE NOTED.  
 5. AS SHOWN UNLESS OTHERWISE NOTED.

- Water Closet
- Lavatory
- (36"x60") Bath Tub
- (2) 2x10 Drp Beam
- PT 2x Ledger Board For Shear Wall
- 1-3/4" x 11-7/8" LVL Beam
- Double 2x10 D.J Ripped @ 16" O.C
- 11-7/8" TJI 210 @ 16" O.C.
- Standard Joist
- Standard Joist
- Standard Joist
- 2x10 Low Joist @ 16" O.C
- Standard Joist
- (2) 2x10 Low Beam
- Standard Joist
- (2) 2x8 Header
- (2) 2x10 Header
- Fiber Glass
- 1/2" Plywood Floor Sheathing
- (2'-6"x6'-8") Door W/ Frame
- (2'-8"x6'-8") Door W/ Frame
- (2'-0"x6'-8") Door W/ Frame
- (5'-0"x6'-8") Door W/ Frame
- (1'-6" W) Closets
- (2'-0" Wide) Soft Close Vanity Base Cabinet
- Cloth Washer & Dryer
- (60"x36") Shower Compartment
- Granite Countertop @ Lavatory
- Wall Tile @ Bath 7'H
- Wall Tile @ Bath Full Height
- Tile Base @ Bath
- Paint @ Bath Wall 3'H
- Paint @ Wall 9'-6" h
- Vinyl Flooring
- Tile Flooring @ Bath
- 5-1/2" Colonial Base Molding (White)
- 5-1/2" Colonial Base Molding (White)
- 5/8" Painted Gypsum Ceiling Board
- Tile Flooring @ Laundry
- 6x6 Post 9'-6" H W/ #4 CS16 Strap Each Post
- (2x4) Stud Wall 9'-6" H
- 2x6 Stud Wall 9'-6" H
- 2x6 Exterior Stud 9'-6" H

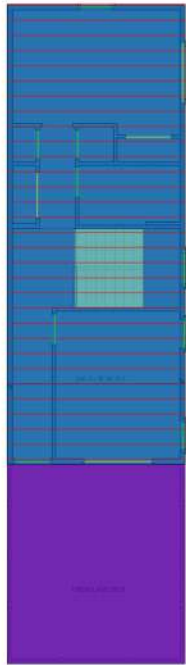
QTY	UNIT	AREA
2.0	EA	2.0
3.0	EA	3.0
1.0	EA	1.0
25.5	FT	25.5
38.2	FT	38.2
63.6	FT	63.6
275.0	SQ FT	275.0
560.2	SQ FT	560.2
203.2	FT	203.2
158.4	FT	158.4
36.8	FT	36.8
29.4	SQ FT	29.4
22.3	FT	22.3
15.0	FT	15.0
23.6	FT	23.6
27.4	FT	27.4
23.1	FT	23.1
190.2	SQ FT	190.2
980.9	SQ FT	980.9
5.0	EA	5.0
3.0	EA	3.0
2.0	EA	2.0
1.0	EA	1.0
30.1	FT	30.1
7.9	FT	7.9
1.0	EA	1.0
1.0	EA	1.0
15.5	SQ FT	15.5
30.1	FT	30.1
23.0	FT	23.0
63.0	FT	63.0
62.2	FT	62.2
284.6	FT	284.6
561.5	SQ FT	561.5
111.4	SQ FT	111.4
724.5	SQ FT	724.5
16.1	SQ FT	16.1
2.0	EA	2.0
30.4	FT	30.4
110.7	FT	110.7
2.1	FT	2.1
105.3	FT	105.3

1 Second Floor - Structure  
 1/4" = 1'-0"

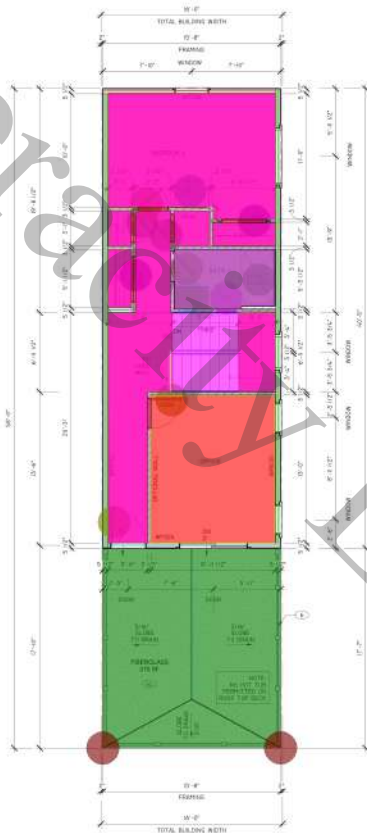
2 Second Floor Plan  
 1/4" = 1'-0"  
 LIVING AREA: 430.00  
 FINISH FLOOR AREA: 108.00

**DECK INSULATION NOTE:**  
 1. ALL IMPACT BUILT  
 2. ALL IMPACT BUILT  
 3. ALL IMPACT BUILT  
 4. ALL IMPACT BUILT  
 5. ALL IMPACT BUILT

DATE	05-07-2024
SCALE	1/4" = 1'-0"
FILE NO.	
DWG. NO.	A5
23-96	



1 Third Floor - Structure  
1/4" = 1'-0"



2 Third Floor Plan  
1/4" = 1'-0"

LAVATORY AREA - 653 SF  
BATH BOD AREA - 215 SF



3 Roof Plan  
1/4" = 1'-0"

- Water Closet 1.0 EA
- Lavatory 1.0 EA
- (36"x60") Bath Tub 1.0 EA
- Fiber Glass 276.1 SQ FT
- 2x6 Ceiling Joist @ 16" O.C 634.0 SQ FT
- Standard Joist 486.1 FT
- (2) 2x8 Header 25.2 FT
- (2) 2x10 Header 18.1 FT
- 1/2" Plywood Floor Sheathing 868.1 SQ FT
- (2'-6"x6'-8") Masonite Door W/ Frame White Painted 2.0 EA
- (2'-8"x6'-8") Door W/ Frame 4.0 EA
- (4'-0"x6'-8") Door W/ Frame 2.0 EA
- (1'-6" W) Closets 13.7 FT
- (22"x30" Attic Access Panel 1.0 EA
- (2'-0" Wide) Soft Close Vanity Base Cabinet 3.0 FT
- Granite Countertop @ Lavatory 5.9 SQ FT
- Wall Tile @ Bath 7H 14.7 FT
- Wall Tile @ Bath Full Height 10.9 FT
- Tile Base @ Bath 25.6 FT
- Paint @ Bath Wall 3H 35.7 FT
- Paint @ Wall 9'-6" h 238.9 FT
- Vinyl Flooring 472.5 SQ FT
- Tile Flooring @ Bath 45.7 SQ FT
- 5-1/2" Colonial Base Molding (White) 188.9 FT
- 5-1/2" Colonial Base Molding (White) 23.4 FT
- 5/8" Painted Gypsum Ceiling Board 411.8 SQ FT
- Ridge 55.7 FT
- Hip 20.1 FT
- 2x2 Roof Rafter @ 1/4" O.C ..... 1/2" Plywo... 841.0 SQ FT
- Grade Aluminum White Gutter & Leader..... Fa... 133.7 FT
- Leader & Down Spout 8.0 EA
- Fascia And Rake TRIM W/ Pre-Coated White Al... 149.4 FT
- (2x4) Stud Wall 9'-6" H 81.2 FT
- 2x6 Stud Wall 9'-6" H 17.3 FT
- 2x6 Braced Wall 9'-6" H 15.3 FT
- 2x6 Exterior Stud 9'-6" H 79.8 FT
- 2x4 Knee Wall 36" H 3.6 FT

ITEM	QUANTITY	UNIT	PRICE	TOTAL
Water Closet	1.0	EA		
Lavatory	1.0	EA		
(36"x60") Bath Tub	1.0	EA		
Fiber Glass	276.1	SQ FT		
2x6 Ceiling Joist @ 16" O.C	634.0	SQ FT		
Standard Joist	486.1	FT		
(2) 2x8 Header	25.2	FT		
(2) 2x10 Header	18.1	FT		
1/2" Plywood Floor Sheathing	868.1	SQ FT		
(2'-6"x6'-8") Masonite Door W/ Frame White Painted	2.0	EA		
(2'-8"x6'-8") Door W/ Frame	4.0	EA		
(4'-0"x6'-8") Door W/ Frame	2.0	EA		
(1'-6" W) Closets	13.7	FT		
(22"x30" Attic Access Panel	1.0	EA		
(2'-0" Wide) Soft Close Vanity Base Cabinet	3.0	FT		
Granite Countertop @ Lavatory	5.9	SQ FT		
Wall Tile @ Bath 7H	14.7	FT		
Wall Tile @ Bath Full Height	10.9	FT		
Tile Base @ Bath	25.6	FT		
Paint @ Bath Wall 3H	35.7	FT		
Paint @ Wall 9'-6" h	238.9	FT		
Vinyl Flooring	472.5	SQ FT		
Tile Flooring @ Bath	45.7	SQ FT		
5-1/2" Colonial Base Molding (White)	188.9	FT		
5-1/2" Colonial Base Molding (White)	23.4	FT		
5/8" Painted Gypsum Ceiling Board	411.8	SQ FT		
Ridge	55.7	FT		
Hip	20.1	FT		
2x2 Roof Rafter @ 1/4" O.C ..... 1/2" Plywo...	841.0	SQ FT		
Grade Aluminum White Gutter & Leader..... Fa...	133.7	FT		
Leader & Down Spout	8.0	EA		
Fascia And Rake TRIM W/ Pre-Coated White Al...	149.4	FT		
(2x4) Stud Wall 9'-6" H	81.2	FT		
2x6 Stud Wall 9'-6" H	17.3	FT		
2x6 Braced Wall 9'-6" H	15.3	FT		
2x6 Exterior Stud 9'-6" H	79.8	FT		
2x4 Knee Wall 36" H	3.6	FT		

**GENERAL NOTES:**

- ALL WORK SHALL BE DONE IN ACCORDANCE WITH THE 2018 INTERNATIONAL RESIDENTIAL CODE BOOK (IRC) AND THE 2018 INTERNATIONAL MECHANICAL, ELECTRICAL AND PLUMBING CODE (IMC).
- ALL WORK SHALL BE DONE IN ACCORDANCE WITH THE 2018 INTERNATIONAL BUILDING DEPARTMENT (IBD) CODE BOOK (IBC).
- ALL WORK SHALL BE DONE IN ACCORDANCE WITH THE 2018 INTERNATIONAL FIRE AND SAFETY CODE (IFSC).
- ALL WORK SHALL BE DONE IN ACCORDANCE WITH THE 2018 INTERNATIONAL ENERGY CONSERVATION CODE (IECC).
- ALL WORK SHALL BE DONE IN ACCORDANCE WITH THE 2018 INTERNATIONAL SWEET'S CATALOG (S&C).
- ALL WORK SHALL BE DONE IN ACCORDANCE WITH THE 2018 INTERNATIONAL CONSTRUCTION COST DATA (ICCD).
- ALL WORK SHALL BE DONE IN ACCORDANCE WITH THE 2018 INTERNATIONAL CONSTRUCTION ESTIMATING (ICE).
- ALL WORK SHALL BE DONE IN ACCORDANCE WITH THE 2018 INTERNATIONAL CONSTRUCTION ESTIMATING SERVICES (ICES).

**DETAIL NOTES:**

- SEE ARCHITECTURAL DRAWINGS FOR ALL DETAILS.
- SEE ARCHITECTURAL DRAWINGS FOR ALL DETAILS.
- SEE ARCHITECTURAL DRAWINGS FOR ALL DETAILS.
- SEE ARCHITECTURAL DRAWINGS FOR ALL DETAILS.
- SEE ARCHITECTURAL DRAWINGS FOR ALL DETAILS.
- SEE ARCHITECTURAL DRAWINGS FOR ALL DETAILS.
- SEE ARCHITECTURAL DRAWINGS FOR ALL DETAILS.
- SEE ARCHITECTURAL DRAWINGS FOR ALL DETAILS.

**ROOF NOTES:**

- SEE ARCHITECTURAL DRAWINGS FOR ALL DETAILS.
- SEE ARCHITECTURAL DRAWINGS FOR ALL DETAILS.
- SEE ARCHITECTURAL DRAWINGS FOR ALL DETAILS.
- SEE ARCHITECTURAL DRAWINGS FOR ALL DETAILS.
- SEE ARCHITECTURAL DRAWINGS FOR ALL DETAILS.
- SEE ARCHITECTURAL DRAWINGS FOR ALL DETAILS.
- SEE ARCHITECTURAL DRAWINGS FOR ALL DETAILS.
- SEE ARCHITECTURAL DRAWINGS FOR ALL DETAILS.

**ARCHITECT**

DATE: 05-07-2024

SCALE: 1/4" = 1'-0"

DWG. NO.: A6

FILE NO.: 23-96

