

MATERIAL LIST	
Project ID:	*****
Location:	
Scope:	Lumber Breakdown
Date:	September 25, 2024



1 - Lumber Grades

Conclusions
 I called for the following lumber grades: Joists/Rafters: DF #2 & DF#1
 Plate: DF #2
 Studs: DF #2 2x4 , DF #2 2x6 , DF #2 2x8 , DF #2 2x10 Misc.: DF #1 & DF #2
 I called all non-treated lumber as "Dry"

2 - Sheathing

Items to Reference
 Page S1.1 calls for 3/8 plywood wall sheathing and calls for 1-1/8" T&G Floor Plywood Sheathing & 5/8 CDX roof sheathing.

2 - Rim, Blocking

Items to Reference
 Structural Blocking on Framing Page S1.2-S1.4
Conclusions
 I called for the following Blocking & Rim.

Item #	Item Description	Unit (EA)	Quantity	Unit (LF) / (SF)	Quantity
Wall Framing					
Basement					
(4" Thick) Stud Wall					
1	(20'-0" L) (2"x4") Top & Bottom Wood Plate	EA	51	LF	1011
2	(11'-6" H) (2"x4") Wood Stud @ 16" O.C (3876 SF)	EA	254	LF	2926
(6" Thick) Stud Wall					
3	(20'-0" L) (2"x6") Top & Bottom Wood Plate	EA	29	LF	570
4	(11'-6" H) (2"x6") Wood Stud @ 16" O.C (2185 SF)	EA	143	LF	1655
(8" Thick) Stud Wall					
5	(20'-0" L) (2"x8") Top & Bottom Wood Plate	EA	4	LF	78
6	(11'-6" H) (2"x8") Wood Stud @ 16" O.C (299 SF)	EA	20	LF	236
(10" Thick) Stud Wall					
7	(20'-0" L) (2"x10") Top & Bottom Wood Plate	EA	4	LF	63
8	(11'-6" H) (2"x10") Wood Stud @ 16" O.C (242 SF)	EA	16	LF	193
Exterior Wall Sheathing					
9	(4x8) (3/8" Thick) CDX Plywood Sheathing	EA	206	SF	6602
First Floor					
(4" Thick) Stud Wall					
10	(20'-0" L) (2"x4") Top & Bottom Wood Plate	EA	32	LF	630
11	(10'-6" H) (2"x4") Wood Stud @ 16" O.C (966 SF)	EA	69	LF	726
12	(11'-6" H) (2"x4") Wood Stud @ 16" O.C (253 SF)	EA	16	LF	190
13	(12'-6" H) (2"x4") Wood Stud @ 16" O.C (213 SF)	EA	12	LF	159
14	(14'-0" H) (2"x4") Wood Stud @ 16" O.C (140 SF)	EA	8	LF	105
15	(14'-9" H) (2"x4") Wood Stud @ 16" O.C (251 SF)	EA	12	LF	188
16	(18'-0" H) (2"x4") Wood Stud @ 16" O.C (198 SF)	EA	8	LF	148
17	(21'-0" H) (2"x4") Wood Stud @ 16" O.C (420 SF)	EA	15	LF	315
18	(7'-0" H) (2"x4") Wood Stud @ 16" O.C (70 SF)	EA	8	LF	52
19	(8'-9" H) (2"x4") Wood Stud @ 16" O.C (97 SF)	EA	8	LF	72
(6" Thick) Stud Wall					
20	(20'-0" L) (2"x6") Top & Bottom Wood Plate	EA	35	LF	678
21	(10'-6" H) (2"x6") Wood Stud @ 16" O.C (357 SF)	EA	25	LF	268
22	(11'-6" H) (2"x6") Wood Stud @ 16" O.C (265 SF)	EA	18	LF	200
23	(12'-6" H) (2"x6") Wood Stud @ 16" O.C (1225 SF)	EA	74	LF	922
24	(17'-0" H) (2"x6") Wood Stud @ 16" O.C (1207 SF)	EA	54	LF	908
(6" Thick) Stud Wall					
25	(20'-0" L) (2"x6") Top Wood Plate	EA	25	LF	498

Item #	Item Description	Unit (EA)	Quantity	Unit (LF) / (SF)	Quantity
26	(12'-6" H) (2"x6") Wood Stud @ 16" O.C (588 SF)	EA	35	LF	442
	(8" Thick) Stud Wall				
27	(20'-0" L) (2"x8") Top Wood Plate	EA	19	LF	364
28	(10'-6" H) (2"x8") Wood Stud @ 16" O.C (1082 SF)	EA	77	LF	814
29	(11'-0" H) (2"x8") Wood Stud @ 16" O.C (132 SF)	EA	10	LF	100
30	(12'-0" H) (2"x8") Wood Stud @ 16" O.C (288 SF)	EA	18	LF	216
31	(16'-0" H) (2"x8") Wood Stud @ 16" O.C (688 SF)	EA	33	LF	518
	(10" Thick) Stud Wall				
32	(20'-0" L) (2"x10") Top Wood Plate	EA	7	LF	138
33	(10'-6" H) (2"x10") Wood Stud @ 16" O.C (525 SF)	EA	37	LF	395
34	(12'-6" H) (2"x10") Wood Stud @ 16" O.C (238 SF)	EA	14	LF	178
	Pressure Treated Plate				
35	(20'-0" L) 3x6 Pressure Treated Plate	EA	24	LF	466
	Exterior Wall Sheathing				
36	(4x8) (3/8" Thick) CDX Plywood Sheathing	EA	177	SF	5661
	Second Floor				
	(4" Thick) Stud Wall				
37	(20'-0" L) (2"x4") Top & Bottom Wood Plate	EA	5	LF	87
38	(10'-6" H) (2"x4") Wood Stud @ 16" O.C (210 SF)	EA	15	LF	157
39	(13'-6" H) (2"x4") Wood Stud @ 16" O.C (81 SF)	EA	5	LF	60
40	(14'-0" H) (2"x4") Wood Stud @ 16" O.C (518 SF)	EA	28	LF	390
41	(6'-6" H) (2"x4") Wood Stud @ 16" O.C (20 SF)	EA	2	LF	15
42	(20'-0" L) (2"x4") Top Wood Plate	EA	1	LF	18
43	(14'-6" H) (2"x4") Wood Stud @ 16" O.C (131 SF)	EA	6	LF	98
	(6" Thick) Stud Wall				
44	(20'-0" L) (2"x6") Top & Bottom Wood Plate	EA	17	LF	321
45	(14'-6" H) (2"x6") Wood Stud @ 16" O.C (537 SF)	EA	27	LF	404
46	(13'-6" H) (2"x6") Wood Stud @ 16" O.C (797 SF)	EA	44	LF	600
47	(12'-6" H) (2"x6") Wood Stud @ 16" O.C (138 SF)	EA	8	LF	104
48	(20'-0" L) (2"x6") Top Wood Plate	EA	22	LF	428
49	(10'-6" H) (2"x6") Wood Stud @ 16" O.C (1208 SF)	EA	86	LF	908
50	(21'-0" H) (2"x6") Wood Stud @ 16" O.C (168 SF)	EA	6	LF	126
51	(5'-6" H) (2"x6") Wood Stud @ 16" O.C (99 SF)	EA	13	LF	74
52	(7'-6" H) (2"x6") Wood Stud @ 16" O.C (368 SF)	EA	36	LF	276
53	(8'-9" H) (2"x6") Wood Stud @ 16" O.C (105 SF)	EA	10	LF	78
54	(9'-6" H) (2"x6") Wood Stud @ 16" O.C (114 SF)	EA	10	LF	85
	(10" Thick) Stud Wall				
55	(20'-0" L) (2"x10") Top Wood Plate	EA	5	LF	98
56	(14'-6" H) (2"x10") Wood Stud @ 16" O.C (610 SF)	EA	32	LF	458
57	(13'-6" H) (2"x10") Wood Stud @ 16" O.C (216 SF)	EA	12	LF	162
	Pressure Treated Plate				
58	(20'-0" L) 3x6 Pressure Treated Plate	EA	14	LF	272
	Exterior Wall Sheathing				
59	(4x8) (3/8" Thick) CDX Plywood Sheathing	EA	90	SF	2886
	Structural Framing				
	Basement				
	Wood Post				
60	(11'-6" Long) (4"x6") Wood Post	EA	12	LF	138
61	(11'-6" Long) (6"x6") Wood Post	EA	5	LF	58
62	(11'-6" Long) (6"x6") P.T Wood Post	EA	4	LF	46
	Hardware				
63	"HDU11" Holdown (9535#)	EA	2		
64	"HDU5" Holdown (5645#)	EA	6		
65	"HDU8" Holdown (6970#)	EA	2		
66	(5/8" Dia x 6" Embed) Galv. Thru-Bolts	EA	161		
	Pressure Treated Plate				
67	(20'-0" L) 2"x4" P.T DF Plate	EA	23	LF	455
	Shear Wall Sheathing				
68	(8'-0"x4'-0") 15/32" Thick (770#fl) Shear Wall Plywood Sheathing	EA	8	SF	245
69	(8'-0"x4'-0") 15/32" Thick (600#fl) Shear Wall Plywood Sheathing	EA	3	SF	92
70	(8'-0"x4'-0") 15/32" Thick (460#fl) Shear Wall Plywood Sheathing	EA	3	SF	92

Item #	Item Description	Unit (EA)	Quantity	Unit (LF) / (SF)	Quantity
71	(8'-0"x4'-0") 15/32" Thick (310#fl) Shear Wall Plywood Sheathing	EA	3	SF	92
	First Floor				
	Wood Post				
72	(10'-6" Long) (4"x6") Wood Post	EA	39	LF	410
73	(10'-6" Long) (4"x6") King Wood Post	EA	4	LF	42
74	(11'-6" Long) (4"x6") Wood Post	EA	2	LF	23
75	(12'-6" Long) (4"x6") Wood Post	EA	5	LF	63
76	(14'-6" Long) (4"x6") Wood Post	EA	2	LF	29
77	(16'-6" Long) (4"x6") Wood Post	EA	4	LF	66
78	(17'-6" Long) (4"x6") Wood Post	EA	2	LF	35
79	(21'-6" Long) (4"x6") Wood Post	EA	4	LF	84
80	(10'-0" Long) (6"x6") Wood Post	EA	13	LF	169
81	(12'-6" Long) (6"x6") Wood Post	EA	4	LF	16
82	(14'-0" Long) (6"x6") Wood Post	EA	2	LF	4
83	(10'-6" Long) 1-3/4"x11-7/8" LVL Vertical Post	EA	2	LF	4
	Wood Beam / Header				
84	(16'-0" Long) (3-1/2"x11-7/8") LSL Beam	EA	2	LF	32
85	(8'-0" Long) (3-1/2"x11-7/8") LSL Beam	EA	4	LF	32
86	(16'-0" Long) (3-1/2"x14") LSL Beam	EA	2	LF	32
87	(20'-0" Long) (3-1/2"x14") LSL Beam	EA	7	LF	140
88	(4'-0" Long) (3-1/2"x14") LSL Beam	EA	4	LF	16
89	(6'-0" Long) (3-1/2"x14") LSL Beam	EA	2	LF	12
90	(6'-0" Long) (5-1/4"x14") LSL Beam	EA	2	LF	12
91	(12'-0" Long) (5-1/4"x14") LSL Beam	EA	2	LF	24
92	(16'-0" Long) (5-1/4"x14") LSL Beam	EA	2	LF	32
93	(14'-0" Long) (3-1/2"x14") PSL Beam	EA	2	LF	28
94	(16'-0" Long) (3-1/2"x14") PSL Beam	EA	2	LF	32
95	(4'-0" Long) (3-1/2"x14") PSL Beam	EA	1	LF	4
96	(12'-0" Long) (5-1/4"x11-1/4") PSL Header	EA	1	LF	11
97	(6'-0" Long) (6"x10") DF Header	EA	1	LF	6
98	(14'-0" Long) (6"x10") DF Header	EA	1	LF	14
99	(20'-0" Long) (6"x10") DF Header	EA	2	LF	40
100	(14'-0" Long) (6"x10") DF Header	EA	1	LF	14
101	(15'-0" Long) (7"x14") PSL Beam	EA	2	LF	30
102	(16'-0" Long) (5-1/4"x18") PSL Beam	EA	2	LF	32
103	(10'-0" Long) (5-1/4"x18") PSL Beam	EA	1	LF	10
104	(12'-0" Long) (5-1/4"x18") PSL Beam	EA	1	LF	12
105	(16'-0" Long) (7"x11-7/8") PSL Beam	EA	1	LF	16
106	(16'-0" Long) (5-1/4"x11-7/8") PSL Header	EA	2	LF	32
107	(8'-0" Long) (6"x12") DF Header	EA	1	LF	8
	Hardware				
108	"BA3.56/14" Simpson	EA	4		
109	"CCQ46" Simpson	EA	1		
110	"CCTQ46" Simpson	EA	1		
111	"CMST12" Strap Simpson	EA	2		
112	"CMSTC14" Strap Simpson	EA	2		
113	"CMSTC16" Strap Simpson (4690#)	EA	21		
114	"CS16" Strap Simpson	EA	4		
115	"ECCLQ46" Simpson	EA	1		
116	"ECCQ46" Simpson	EA	2		
117	"ECCQ46" Simpson	EA	3		
118	"EGQ5.3746" Simpson	EA	4		
119	"HB5.50/11.88" Simpson	EA	8		
120	"HDQ8" Horizontal Holdown	EA	2		
121	"HDU2" Holdown (3075#)	EA	8		
122	"HDU5" Holdown (5645#)	EA	18		
123	"HDU8" Holdown (6970#)	EA	7		
124	"HGLTV7" Simpson	EA	4		
125	"HGUS7.25/14" Simpson	EA	10		
126	"HHGU5.50" Simpson	EA	2		
127	"HHUS410" Simpson	EA	8		

Item #	Item Description	Unit (EA)	Quantity	Unit (LF) / (SF)	Quantity
128	"HU412" Holdown	EA	8		
129	"HU414" Holdown	EA	4		
130	"HU610" Holdown	EA	8		
131	"HUC412" Simpson	EA	8		
132	"HUCQ612" Simpson	EA	2		
133	"MASTC66B3Z" Simpson	EA	1		
134	"MPBZ66" Simpson	EA	2		
135	"MSTC48B3" Simpson	EA	1		
136	"PCZ66" Simpson	EA	2		
137	Shear Plate 3/8" W/ (3) 3/4" A325N Bolts In Horizontal	EA	22		
138	"LPT4" Simpson Typ.	EA	1704		
139	WSWH 12x11 Panel - Anchor Bolt Model: WSWH-AB1x36 - 36" Anchor Bolts Length - (2) #3Hairpins	EA	1		
140	WSWH 18x10 Panel - Anchor Bolt Model: WSWH-AB1x36 - 36" Anchor Bolts Length - (2) #3Hairpins	EA	2		
141	WSWH 18x11 Panel - Anchor Bolt Model: WSWH-AB1x36 - 36" Anchor Bolts Length - (2) #3Hairpins	EA	2		
142	WSWH 18x12 Panel - Anchor Bolt Model: WSWH-AB1x36 - 36" Anchor Bolts Length - (2) #3Hairpins	EA	2		
143	WSWH 24x10 Panel - Anchor Bolt Model: WSWH-AB1x36 - 36" Anchor Bolts Length - (2) #3Hairpins	EA	2		
144	WSWH 24x10 Panel - Anchor Bolt Model: WSWH-AB1x36HS - 36" Anchor Bolts Length - (2) #3Hairpins	EA	4		
145	WSWH 24x12 Panel - Anchor Bolt Model: WSWH-AB1x36HS - 36" Anchor Bolts Length - (2) #3Hairpins	EA	3		
	Joist				
146	(2"x10") Floor Joist @ 16" O.C	SF	112	LF	81
147	(6'-0" Long) (2"x10") Floor Joist	EA	2	6	12
148	(4'-0" Long) (2"x10") Floor Joist	EA	4	4	16
149	(9'-0" Long) (2"x10") Floor Joist	EA	1	9	9
150	(8'-0" Long) (2"x10") Floor Joist	EA	2	8	16
151	(7'-0" Long) (2"x10") Floor Joist	EA	4	7	28
152	14" TJI 360 Floor Joist @ 19.2" O.C	SF	510	LF	422
153	(15'-0" Long) 14" TJI 360 Floor Joist	EA	8	15	120
154	(16'-0" Long) 14" TJI 360 Floor Joist	EA	11	16	176
155	(20'-0" Long) 14" TJI 360 Floor Joist	EA	6	20	120
156	(6'-0" Long) 14" TJI 360 Floor Joist	EA	1	6	6
157	11-7/8" TJI 360 Floor Joist @ 16" O.C	SF	1041	LF	805
158	(15'-0" Long) 11-7/8" TJI 360 Floor Joist	EA	35	15	525
159	(14'-0" Long) 11-7/8" TJI 360 Floor Joist	EA	4	14	56
160	(16'-0" Long) 11-7/8" TJI 360 Floor Joist	EA	14	16	224
161	1-3/4"x11-1/4" LVL Joist @ 16" O.C	SF	123	LF	88
162	(11'-0" Long) 1-3/4"x11-1/4" LVL Joist	EA	8	11	88
163	14" TJI 360 Floor Joist @ 16" O.C	SF	2638	LF	2045
164	(8'-0" Long) 14" TJI 360 Floor Joist	EA	1	8	8
165	(10'-0" Long) 14" TJI 360 Floor Joist	EA	6	10	60
166	(12'-0" Long) 14" TJI 360 Floor Joist	EA	9	12	108

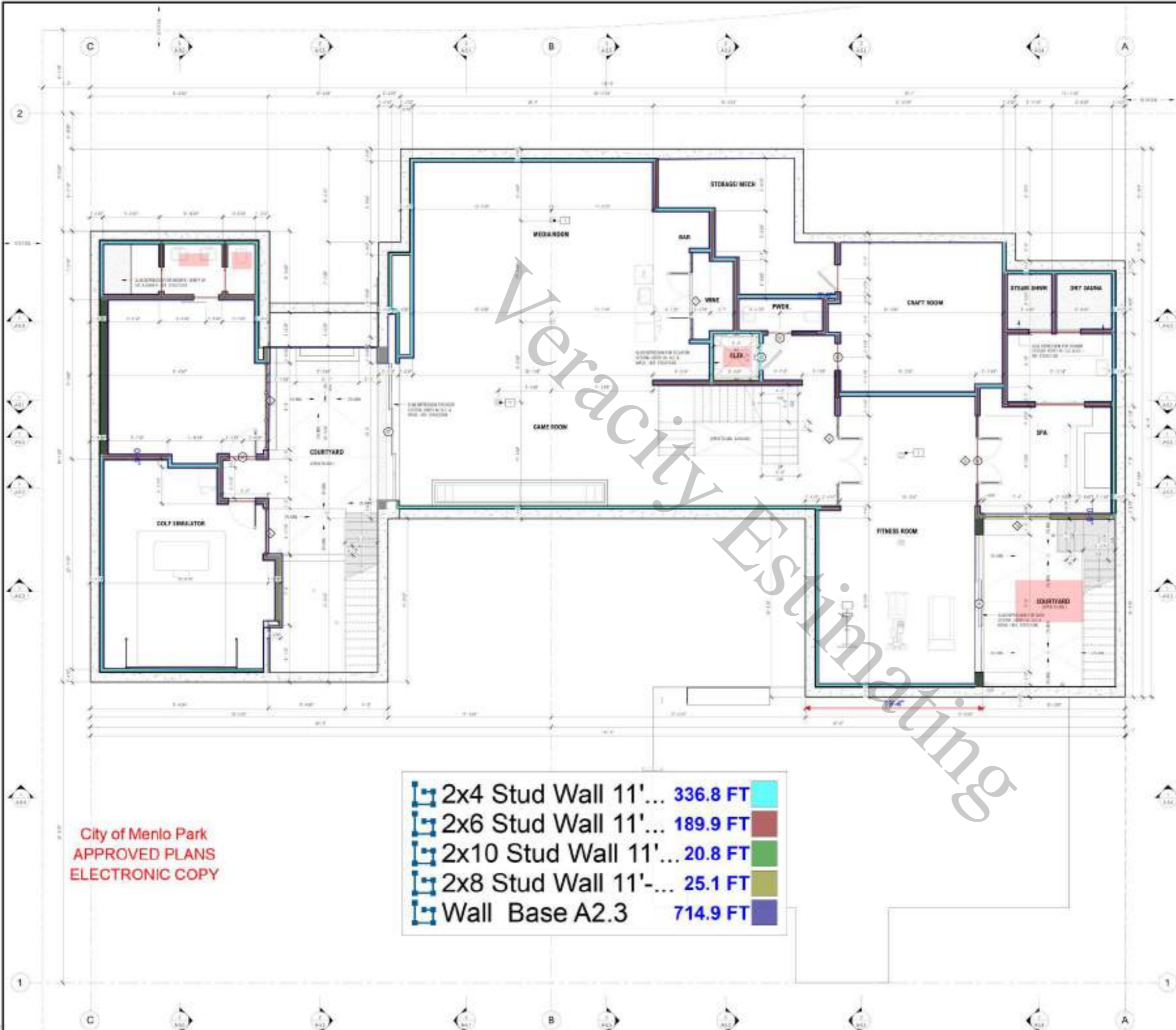
Item #	Item Description	Unit (EA)	Quantity	Unit (LF) / (SF)	Quantity
167	(14'-0" Long) 14" TJI 360 Floor Joist	EA	17	14	238
168	(16'-0" Long) 14" TJI 360 Floor Joist	EA	42	16	672
169	(18'-0" Long) 14" TJI 360 Floor Joist	EA	12	18	216
170	(20'-0" Long) 14" TJI 360 Floor Joist	EA	42	20	840
	Sheathing				
171	(8'-0"x4'-0") (1-1/8" Thick) T&G Plywood Sheathing	EA	135	SF	4312
172	(8'-0"x4'-0") (5/8" Thick) CDX Plywood Sheathing	EA	4	SF	112
	Shear Wall Sheathing				
173	(8'-0"x4'-0") 15/32" Thick (770#fl) Shear Wall Plywood Sheathing	EA	4	SF	112
174	(8'-0"x4'-0") 15/32" Thick (600#fl) Shear Wall Plywood Sheathing	EA	18	SF	577
175	(8'-0"x4'-0") 15/32" Thick (460#fl) Shear Wall Plywood Sheathing	EA	26	SF	828
176	(8'-0"x4'-0") 15/32" Thick (310#fl) Shear Wall Plywood Sheathing	EA	41	SF	1303
	Blocking				
177	1-3/4" LSL Blocking W/ 8d Toenails			LF	246
178	2x6 Blocking			LF	12
179	2x12 PT Rim Plate W/ 5/8" Dia Anchor Bolts			LF	63
180	1-3/4" LVL Blocking			LF	6
	Second Floor/ Low Roof Framing				
	Wood Post				
181	(10'-6" Long) (4"x6") Wood Post	EA	5	LF	53
182	(12'-6" Long) (4"x6") Wood Post	EA	1	LF	13
183	(13'-6" Long) (4"x6") Wood Post	EA	3	LF	41
184	(14'-6" Long) (4"x6") Wood Post	EA	3	LF	44
185	(16'-6" Long) (4"x6") Wood Post	EA	1	LF	17
186	(17'-6" Long) (4"x6") Wood Post	EA	2	LF	35
187	(7'-6" Long) (4"x6") Wood Post	EA	1	LF	8
188	(10'-6" Long) (6"x6") Wood Post	EA	4	LF	42
189	(16'-6" Long) (6"x6") Wood Post	EA	1	LF	16
	Hardware				
190	5/8" Dia Anchor Bolts	EA	16		
191	"BA412" Hanger	EA	2		
192	"CCQ46" Simpson	EA	2		
193	"CCQ46" Simpson	EA	2		
194	"CCQ66" Simpson	EA	2		
195	"CCTQ46" Simpson	EA	1		
196	"CMST14" Strap (6475#)	EA	4		
197	"CMSTC16" Strap Simpson (4690#)	EA	45		
198	"CS14" Strap Simpson	EA	4		
199	"CS16" Strap Simpson	EA	16		
200	"ECCQ46" Simpson	EA	10		
201	"ECCQ66" Simpson	EA	11		
202	"EPCZ46" Simpson	EA	4		
203	"HDU2" Holdown	EA	2		
204	"HHUS410" Simpson	EA	10		
205	"HU412" Simpson	EA	4		
206	"HU68" Simpson	EA	6		
207	"HUC412" Simpson	EA	4		
208	"LCE66" Simpson	EA	2		
209	"LPCZ46" Simpson	EA	1		
210	"MSTC48B3" Bent Strap	EA	3		
211	"MSTC48B3" Strap Simpson	EA	1		
212	"PCZ46" Simpson	EA	1		
213	"HHUS5.50/10" Simpson	EA	4		
214	"LPT4" Simpson Typ.	EA	1848		
	Wood Beam / Header				
215	(10'-0" Long) (4"x10") DF#1 Beam	EA	2	LF	20
216	(10'-0" Long) (5-1/4"x14") PSL Beam	EA	1	LF	10
217	(10'-0" Long) (6"x8") DF#1 Beam	EA	1	LF	10
218	(10'-0" Long) (6"x8") DF#1 Header	EA	3	LF	30
219	(12'-0" Long) (3-1/2"x14") LSL Beam	EA	2	LF	24
220	(12'-0" Long) (3-1/2"x14") PSL Beam	EA	1	LF	12

Item #	Item Description	Unit (EA)	Quantity	Unit (LF) / (SF)	Quantity
221	(12'-0" Long) (3-1/2"x14") PSL Ridge Beam	EA	4	LF	48
222	(12'-0" Long) (4"x10") DF#1 Beam	EA	1	LF	12
223	(12'-0" Long) (4"x12") DF#1 Beam	EA	1	LF	12
224	(12'-0" Long) (5-1/4"x14") PSL Beam	EA	1	LF	12
225	(12'-0" Long) (6"x12") DF#1 Header	EA	2	LF	20
226	(12'-0" Long) (6"x8") DF#1 Header	EA	1	LF	12
227	(14'-0" Long) (2"x8") Sloped Beam	EA	1	LF	10
228	(14'-0" Long) (4"x10") DF Sloped Beam	EA	2	LF	28
229	(14'-0" Long) (4"x8") Sloped Beam	EA	2	LF	28
230	(14'-0" Long) (5-1/4"x11-1/4") PSL Header	EA	1	LF	14
231	(14'-0" Long) (5-1/4"x14") PSL Header	EA	1	LF	19
232	(14'-0" Long) (6"x12") DF#1 Beam	EA	1	LF	7
233	(14'-0" Long) (6"x8") DF#1 Beam	EA	2	LF	28
234	(14'-0" Long) (6"x8") DF#1 Header	EA	1	LF	14
235	(15'-0" Long) (4"x10") DF Sloped Beam	EA	4	LF	60
236	(15'-0" Long) (5-1/4"x11-7/8") PSL Beam	EA	1	LF	15
237	(16'-0" Long) (3-1/2"x14") LSL Beam	EA	4	LF	64
238	(16'-0" Long) (3-1/2"x14") PSL Beam	EA	1	LF	16
239	(16'-0" Long) (5-1/4"x14") PSL Beam	EA	1	LF	15
240	(18'-0" Long) (2"x8") Valley Beam	EA	2	LF	16
241	(18'-0" Long) (5-1/4"x14") PSL Beam	EA	2	LF	34
242	(18'-0" Long) (6"x8") Cedar Beam	EA	12	LF	204
243	(18'-0" Long) (8"x12") Cedar Beam	EA	4	LF	64
244	(2'-0" Long) (3-1/2"x14") PSL Ridge Beam	EA	1	LF	2
245	(20'-0" Long) (5-1/4"x14") PSL Beam	EA	2	LF	38
246	(4'-0" Long) (3-1/2"x14") LSL Beam	EA	1	LF	4
247	(4'-0" Long) (4"x12") DF#1 Beam	EA	2	LF	8
248	(4'-0" Long) (4"x6") DF#1 Header	EA	4	LF	16
249	(4'-0" Long) (6"x8") DF#1 Header	EA	22	LF	88
250	(6'-0" Long) (3-1/2"x14") LSL Beam	EA	1	LF	6
251	(6'-0" Long) (5-1/4"x11-1/4") PSL Header	EA	1	LF	6
252	(6'-0" Long) (5-1/4"x11-7/8") PSL Beam	EA	1	LF	6
253	(6'-0" Long) (5-1/4"x14") PSL Beam	EA	1	LF	6
254	(6'-0" Long) (6"x8") DF#1 Header	EA	9	LF	54
255	(7'-0" Long) (4"x8") DF#1 Beam	EA	2	LF	14
256	(8'-0" Long) (2"x8") Hip Beam	EA	1	LF	8
257	(8'-0" Long) (3-1/2"x14") LSL Beam	EA	2	LF	14
258	(8'-0" Long) (3-1/2"x14") PSL Ridge Beam	EA	1	LF	8
259	(8'-0" Long) (4"x12") DF Ridge Beam	EA	1	LF	8
260	(8'-0" Long) (4"x12") DF#1 Beam	EA	1	LF	8
261	(8'-0" Long) (6"x10") DF#1 Header	EA	3	LF	21
262	(8'-0" Long) (6"x8") DF#1 Beam	EA	1	LF	8
263	(8'-0" Long) (6"x8") DF#1 Header	EA	9	LF	63
264	(9'-0" Long) (2"x8") Hip Beam	EA	1	LF	9
265	(9'-0" Long) (6"x8") DF#1 Header	EA	2	LF	18
	Joist				
266	(2"x10") DF#2 Flat Roof Joist @ 24" O.C	SF	386	LF	264
267	(14'-0" Long) (2"x10") DF#2 Flat Roof Joist	EA	7	14	98
268	(6'-0" Long) (2"x10") DF#2 Flat Roof Joist	EA	1	6	6
269	(8'-0" Long) (2"x10") DF#2 Flat Roof Joist	EA	20	8	160
270	(2"x12") DF#2 Ceiling Joist @ 24" O.C	SF	887	LF	458
271	(2'-0" Long) (2"x12") DF#2 Ceiling Joist	EA	4	2	8
272	(18'-0" Long) (2"x12") DF#2 Ceiling Joist	EA	25	18	450
273	(2"x10") Floor Joist @ 16" O.C	SF	50	LF	42
274	(12'-0" Long) (2"x10") Floor Joist	EA	3	12	36
275	(6'-0" Long) (2"x10") Floor Joist	EA	1	6	6
276	(2"x4") Ceiling Joist @ 16" O.C	SF	54	LF	50
277	(6'-0" Long) (2"x4") Ceiling Joist	EA	6	10	60
278	14" TJI 360 Floor Joist @ 16" O.C	SF	1178	LF	1170
279	(10'-0" Long) 14" TJI 360 Floor Joist	EA	4	10	40
280	(14'-0" Long) 14" TJI 360 Floor Joist	EA	21	14	294

Item #	Item Description	Unit (EA)	Quantity	Unit (LF) / (SF)	Quantity
281	(16'-0" Long) 14" TJI 360 Floor Joist	EA	26	16	416
282	(18'-0" Long) 14" TJI 360 Floor Joist	EA	22	18	396
283	(2'-0" Long) 14" TJI 360 Floor Joist	EA	5	2	10
284	(4'-0" Long) 14" TJI 360 Floor Joist	EA	2	4	8
285	(6'-0" Long) 14" TJI 360 Floor Joist	EA	1	6	6
286	(2"x6") DF#2 Ceiling Joist @ 16" O.C	SF	80	LF	64
287	(8'-0" Long) (2"x6") DF#2 Ceiling Joist	EA	8	8	64
288	(2"x10") DF#2 Flat Roof Joist @ 24" O.C	SF	386	LF	246
289	(14'-0" Long) (2"x10") DF#2 Flat Roof Joist	EA	7	14	98
290	(6'-0" Long) (2"x10") DF#2 Flat Roof Joist	EA	10	6	60
291	(8'-0" Long) (2"x10") DF#2 Flat Roof Joist	EA	11	8	88
292	14" TJI 360 Floor Joist @ 16" O.C	SF	207	LF	188
293	(10'-0" Long) 14" TJI 360 Floor Joist	EA	6	10	60
294	(16'-0" Long) 14" TJI 360 Floor Joist	EA	8	16	128
295	(2"x12") DF#2 Joist @ 16" O.C	SF	526	LF	368
296	(12'-0" Long) (2"x12") DF#2 Joist	EA	30	12	360
297	(4'-0" Long) (2"x12") DF#2 Joist	EA	2	4	8
298	(2"x10") DF#2 Ceiling Joist @ 24" O.C	SF	194	LF	82
299	(16'-0" Long) (2"x10") DF#2 Ceiling Joist	EA	5	16	80
300	(2'-0" Long) (2"x10") DF#2 Ceiling Joist	EA	1	2	2
301	1-3/4"x11-1/4" LVL Flat Roof Joist 24" O.C	SF	353	LF	260
302	(20'-0" Long) 1-3/4"x11-1/4" LVL Flat Roof Joist	EA	13	20	260
303	(2"x8") DF#2 Flat Roof Joist 24" O.C	SF	82	LF	44
304	(20'-0" Long) (2"x8") DF#2 Flat Roof Joist	EA	11	4	44
305	(2"x12") DF#2 Ceiling Joist @ 24" O.C	SF	1093	LF	528
306	(12'-0" Long) (2"x12") DF#2 Ceiling Joist	EA	42	12	504
307	(10'-0" Long) (2"x12") DF#2 Ceiling Joist	EA	2	10	20
308	(2'-0" Long) (2"x12") DF#2 Ceiling Joist	EA	2	2	4
	Rafter				
309	(2"x8") DF#2 Rafter @ 24" O.C	SF	986	LF	526
310	(4'-0" Long) (2"x8") DF#2 Rafter	EA	4	4	16
311	(2'-0" Long) (2"x8") DF#2 Rafter	EA	2	2	4
312	(20'-0" Long) (2"x8") DF#2 Rafter	EA	19	20	380
313	(18'-0" Long) (2"x8") DF#2 Rafter	EA	7	18	126
314	(2"x6") DF Rafter @ 24" O.C	SF	54	LF	28
315	(4'-0" Long) (2"x6") DF Rafter	EA	7	4	28
316	(2"x10") DF#2 Rafter @ 24" O.C	SF	1096	LF	780
317	(20'-0" Long) (2"x10") DF#2 Rafter	EA	22	20	440
318	(14'-0" Long) (2"x10") DF#2 Rafter	EA	24	14	336
319	(2'-0" Long) (2"x10") DF#2 Rafter	EA	2	2	4
	Ledger/ Blocking				
320	(1-3/4") LSL Blocking			LF	176
321	(2"x12") Fascia Rim			LF	104
322	(2"x4") Blocking			LF	232
323	(2"x8") Fascia Rim			LF	138
324	(2"x8") Ledger			LF	14
	Shear wall Sheathing				
325	(8'-0"x4'-0") 15/32" Thick (310#fl) Shear Wall Plywood Sheathing	EA	14	SF	431
326	(8'-0"x4'-0") 15/32" Thick (460#fl) Shear Wall Plywood Sheathing	EA	20	SF	620
	Sheathing				
327	(8'-0"x4'-0") (1-1/8" Thick) T&G Plywood Sheathing	EA	37	SF	1178
328	(8'-0"x4'-0") (5/8" Thick) CDX Plywood Sheathing	EA	90	SF	2861
329	(8'-0"x4'-0") (3/4" Thick) CDX Plywood Sheathing	EA	28	SF	879
	Second Floor Ceiling Framing & Garage Roof				
	Wood Post				
330	(10'-6" Long) (4"x6") Wood Post	EA	6	LF	63
	Wood Beam / Header				
331	(6'-0" Long) (4"x8") DF Ceiling BM	EA	1	LF	6
332	(4'-0" Long) (4"x8") DF Beam	EA	1	LF	4
333	(8'-0" Long) (4"x8") DF Beam	EA	1	LF	8
334	(14'-0" Long) (4"x12") DF#1 Ridge Beam	EA	1	LF	14

Item #	Item Description	Unit (EA)	Quantity	Unit (LF) / (SF)	Quantity
335	(14'-0" Long) (5-1/4"x11-1/4") PSL Beam	EA	1	LF	14
336	(18'-0" Long) (5-1/4"x11-1/4") PSL Beam	EA	1	LF	18
337	(12'-0" Long) (4"x8") DF Beam	EA	4	LF	48
338	(14'-0" Long) (5-1/4"x14") PSL Beam	EA	2	LF	28
339	(18'-0" Long) (5-1/4"x14") PSL Beam	EA	2	LF	36
340	(14'-0" Long) (4"x10") DF Beam	EA	4	LF	28
341	(4'-0" Long) (2"x8") Valley Beam	EA	4	LF	16
342	(8'-0" Long) (6"x10") Header	EA	2	LF	16
343	(10'-0" Long) (6"x12") DF#1 Header	EA	2	LF	20
344	(10'-0" Long) (4"x12") DF Beam	EA	1	LF	10
	Hardware				
345	"CMSTC16" Strap Simpson	EA	6		
346	"CMSTC16" Strap Simpson	EA	2		
347	"CS16" Strap Simpson	EA	4		
348	"ECCQ46" Simpson	EA	1		
349	"ECCQ66" Simpson	EA	6		
350	"EPCZ46" Simpson	EA	4		
351	"HU410" Simpson	EA	8		
352	"HUC412" Simpson	EA	2		
353	"LSSR410" Simpson	EA	8		
354	"A35" Clip Simpson	EA	476		
	Joist				
355	(2"x6") DF#2 Ceiling Joist @ 24" O.C	SF	854	LF	513
356	(19'-0" Long) (2"x6") DF#2 Ceiling Joist	EA	27	19	513
357	(2"x6") Flat Roof Joist @ 16" O.C	SF	609	LF	446
358	(12'-0" Long) (2"x6") Flat Roof Joist	EA	14	12	168
359	(16'-0" Long) (2"x6") Flat Roof Joist	EA	3	16	48
360	(4'-0" Long) (2"x6") Flat Roof Joist	EA	8	4	32
361	(6'-0" Long) (2"x6") Flat Roof Joist	EA	33	6	198
	Rafter				
362	(2"x8") DF#2 Rafter @ 24" O.C	SF	539	LF	457
363	(10'-0" Long) (2"x8") DF#2 Rafter	EA	10	10	100
364	(18'-0" Long) (2"x8") DF#2 Rafter	EA	10	18	180
365	(12'-0" Long) (2"x8") DF#2 Rafter	EA	12	12	144
366	(16'-0" Long) (2"x8") DF#2 Rafter	EA	1	16	16
367	(20'-0" Long) (2"x8") DF#2 Rafter	EA	1	20	20
368	(8'-0" Long) (2"x8") DF#2 Rafter	EA	1	8	8
369	(2"x8") Roof Rafter @ 24" O.C	SF	41	LF	44
370	(6'-0" Long) (2"x8") Roof Rafter	EA	6	6	36
371	(4'-0" Long) (2"x8") Roof Rafter	EA	2	4	8
	Sheathing				
372	(8'-0"x4'-0") (5/8" Thick) CDX Plywood Sheathing	EA	20	SF	634
373	(8'-0"x4'-0") (3/4" Thick) CDX Plywood Sheathing	EA	20	SF	609
	Blocking				
374	2x8 Blocking			LF	12
	Roof Framing				
	Hardware				
375	"LSSR410" Simpson	EA	16		
376	"CCQ46" Simpson	EA	4		
377	"ECCQ46" Simpson	EA	6		
378	"CS16" Strap 6'L	EA	2		
379	"CS14" Strap 4'L	EA	4		
380	"CMSTC16" Strap 4'L	EA	4		
381	"HU48" Hanger	EA	4		
382	"CS16" 4'L @ 48" O.C	EA	33		
383	"A35" Simpson Clip	EA	396		
	Rafter				
384	(2"x8") DF#2 Rafter @ 24" O.C	SF	539	LF	457
385	(10'-0" Long) (2"x8") DF#2 Rafter	EA	4	10	40
386	(12'-0" Long) (2"x8") DF#2 Rafter	EA	1	12	12
387	(14'-0" Long) (2"x8") DF#2 Rafter	EA	1	14	14

Item #	Item Description	Unit (EA)	Quantity	Unit (LF) / (SF)	Quantity
388	(16'-0" Long) (2"x8") DF#2 Rafter	EA	8	16	128
389	(2'-0" Long) (2"x8") DF#2 Rafter	EA	2	2	4
390	(20'-0" Long) (2"x8") DF#2 Rafter	EA	3	20	60
391	(6'-0" Long) (2"x8") DF#2 Rafter	EA	6	6	36
392	(10'-0" Long) (2"x8") DF#2 Rafter	EA	9	10	90
393	(14'-0" Long) (2"x8") DF#2 Rafter	EA	2	14	28
394	(18'-0" Long) (2"x8") DF#2 Rafter	EA	2	18	36
395	(12'-0" Long) (2"x8") DF#2 Rafter	EA	49	12	588
396	(14'-0" Long) (2"x8") DF#2 Rafter	EA	4	14	56
397	(18'-0" Long) (2"x8") DF#2 Rafter	EA	2	18	36
398	(12'-0" Long) (2"x8") DF#2 Rafter	EA	7	12	84
	Beam				
399	(16'-0" Long) (3-1/2"x14") PSL Ridge Beam	EA	4	LF	64
400	(12'-0" Long) (4"x10") DF Valley Beam	EA	2	LF	24
401	(18'-0" Long) (4"x10") DF Valley Beam	EA	6	LF	108
402	(8'-0" Long) (4"x10") DF Valley Beam	EA	2	LF	16
403	(18'-0" Long) (3-1/2"x11-1/4") PSL Ridge Beam	EA	1	LF	18
404	(16'-0" Long) (3-1/2"x11-1/4") PSL Ridge Beam	EA	2	LF	32
405	(10'-0" Long) (4"x8") Sloped DF Beam	EA	6	LF	60
406	(10'-0" Long) (2"x8") Beam	EA	4	LF	40
	Sheathing				
407	(8'-0"x4'-0") (5/8" Thick) CDX Plywood Sheathing	EA	54	SF	1723
	Blocking				
408	2x8 Fascia Rim			LF	182
	Trims				
	Door Trims - (Trim size assumed)				
409	(1x4) Exterior Door Trims			LF	376
410	(1x4) Interior Door Trims			LF	724
	Window Trims - (Trim size assumed)				
411	(1x4) Exterior Window Trim			LF	649
412	(1x4) Interior Window Trim			LF	579
	Stairs				
413	(3'-6"x1'-0") 3/8" Wood Finish On Treads (12.85 SF/Tread) (72 EA)	Loc	1		
	Wall Base				
414	4" Wood Wall Base			LF	1734



City of Menlo Park
APPROVED PLANS
ELECTRONIC COPY

	2x4 Stud Wall 11'...	336.8 FT
	2x6 Stud Wall 11'...	189.9 FT
	2x10 Stud Wall 11'...	20.8 FT
	2x8 Stud Wall 11'-...	25.1 FT
	Wall Base A2.3	714.9 FT

GENERAL NOTES:

1. ALL DIMENSIONS UNLESS OTHERWISE SPECIFIED SHALL BE IN FEET AND INCHES TO THE NEAREST 1/8". DIMENSIONS SHOWN ON THIS PLAN SHALL BE CONSIDERED TO TAKE PRECEDENCE OVER ANY OTHER DIMENSIONS SHOWN ON OTHER PLANS OR SPECIFICATIONS.

2. THE CONTRACTOR SHALL BE RESPONSIBLE FOR OBTAINING ALL NECESSARY PERMITS AND APPROVALS FROM THE CITY OF MENLO PARK AND THE COUNTY OF SANTA CLARA.

3. THE CONTRACTOR SHALL BE RESPONSIBLE FOR OBTAINING ALL NECESSARY PERMITS AND APPROVALS FROM THE CITY OF MENLO PARK AND THE COUNTY OF SANTA CLARA.

4. THE CONTRACTOR SHALL BE RESPONSIBLE FOR OBTAINING ALL NECESSARY PERMITS AND APPROVALS FROM THE CITY OF MENLO PARK AND THE COUNTY OF SANTA CLARA.

5. THE CONTRACTOR SHALL BE RESPONSIBLE FOR OBTAINING ALL NECESSARY PERMITS AND APPROVALS FROM THE CITY OF MENLO PARK AND THE COUNTY OF SANTA CLARA.

6. THE CONTRACTOR SHALL BE RESPONSIBLE FOR OBTAINING ALL NECESSARY PERMITS AND APPROVALS FROM THE CITY OF MENLO PARK AND THE COUNTY OF SANTA CLARA.

7. THE CONTRACTOR SHALL BE RESPONSIBLE FOR OBTAINING ALL NECESSARY PERMITS AND APPROVALS FROM THE CITY OF MENLO PARK AND THE COUNTY OF SANTA CLARA.

8. THE CONTRACTOR SHALL BE RESPONSIBLE FOR OBTAINING ALL NECESSARY PERMITS AND APPROVALS FROM THE CITY OF MENLO PARK AND THE COUNTY OF SANTA CLARA.

9. THE CONTRACTOR SHALL BE RESPONSIBLE FOR OBTAINING ALL NECESSARY PERMITS AND APPROVALS FROM THE CITY OF MENLO PARK AND THE COUNTY OF SANTA CLARA.

10. THE CONTRACTOR SHALL BE RESPONSIBLE FOR OBTAINING ALL NECESSARY PERMITS AND APPROVALS FROM THE CITY OF MENLO PARK AND THE COUNTY OF SANTA CLARA.

11. THE CONTRACTOR SHALL BE RESPONSIBLE FOR OBTAINING ALL NECESSARY PERMITS AND APPROVALS FROM THE CITY OF MENLO PARK AND THE COUNTY OF SANTA CLARA.

12. THE CONTRACTOR SHALL BE RESPONSIBLE FOR OBTAINING ALL NECESSARY PERMITS AND APPROVALS FROM THE CITY OF MENLO PARK AND THE COUNTY OF SANTA CLARA.

13. THE CONTRACTOR SHALL BE RESPONSIBLE FOR OBTAINING ALL NECESSARY PERMITS AND APPROVALS FROM THE CITY OF MENLO PARK AND THE COUNTY OF SANTA CLARA.

14. THE CONTRACTOR SHALL BE RESPONSIBLE FOR OBTAINING ALL NECESSARY PERMITS AND APPROVALS FROM THE CITY OF MENLO PARK AND THE COUNTY OF SANTA CLARA.

15. THE CONTRACTOR SHALL BE RESPONSIBLE FOR OBTAINING ALL NECESSARY PERMITS AND APPROVALS FROM THE CITY OF MENLO PARK AND THE COUNTY OF SANTA CLARA.

ROOM NAME

STORAGE MEZZ

BAR

WINE

PWR

GAME ROOM

FITNESS ROOM

GOLF SIMULATOR

COURTYARD

STAIR

ELEVATOR

MECHANICAL

ELECTRICAL

PLUMBING

FINISH

PROJECT ADDRESS:

11111 BAY STREET, MENLO PARK, CA 94025

OWNER:

11111 BAY STREET, MENLO PARK, CA 94025

DATE:

11/11/2023

SCALE:

AS SHOWN

PROJECT NO.:

2023-1111

PROJECT NAME:

11111 BAY STREET, MENLO PARK, CA 94025

BASEMENT LEVEL DIMENSION PLAN

A-2.3

BRANDON ARCHITECTS

11111 BAY STREET, MENLO PARK, CA 94025

TEL: 650.321.1111

WWW.BRANDONARCHITECTS.COM

PHASE DATE:

11/11/2023

PLAN SHEET NO.:

2023-1111

PROJECT NO.:

2023-1111

PROJECT NAME:

11111 BAY STREET, MENLO PARK, CA 94025

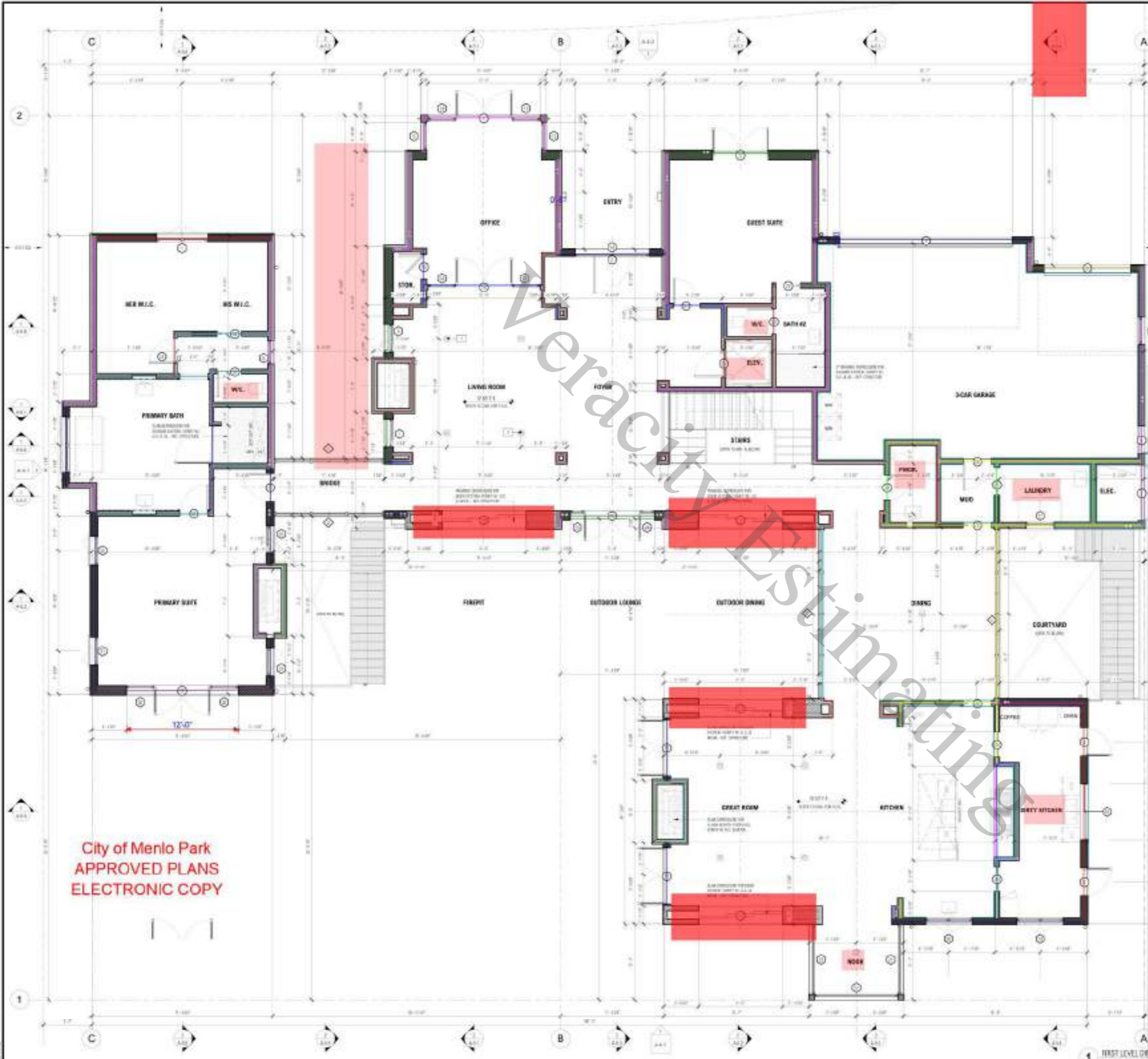
VERACITY ESTIMATING

Construction Estimation Services

11111 BAY STREET, MENLO PARK, CA 94025

TEL: 650.321.1111

WWW.VERACITYESTIMATING.COM



NOTES:
 1. ALL DIMENSIONS ARE UNLESS OTHERWISE SPECIFIED IN THIS PLAN.
 2. ALL WALLS SHALL BE CONSTRUCTED WITH 2x4 STUD WALLS UNLESS OTHERWISE SPECIFIED.
 3. ALL WALLS SHALL BE FINISHED WITH GYPSONUM BOARD UNLESS OTHERWISE SPECIFIED.
 4. ALL WALLS SHALL BE FINISHED WITH PLASTER OR GYPSONUM BOARD UNLESS OTHERWISE SPECIFIED.
 5. ALL WALLS SHALL BE FINISHED WITH PAINT UNLESS OTHERWISE SPECIFIED.
 6. ALL WALLS SHALL BE FINISHED WITH TILE UNLESS OTHERWISE SPECIFIED.
 7. ALL WALLS SHALL BE FINISHED WITH STONE UNLESS OTHERWISE SPECIFIED.
 8. ALL WALLS SHALL BE FINISHED WITH BRICK UNLESS OTHERWISE SPECIFIED.
 9. ALL WALLS SHALL BE FINISHED WITH CONCRETE UNLESS OTHERWISE SPECIFIED.
 10. ALL WALLS SHALL BE FINISHED WITH BLOCK UNLESS OTHERWISE SPECIFIED.
 11. ALL WALLS SHALL BE FINISHED WITH CMU UNLESS OTHERWISE SPECIFIED.
 12. ALL WALLS SHALL BE FINISHED WITH CMU BLOCK UNLESS OTHERWISE SPECIFIED.
 13. ALL WALLS SHALL BE FINISHED WITH CMU BLOCK UNLESS OTHERWISE SPECIFIED.
 14. ALL WALLS SHALL BE FINISHED WITH CMU BLOCK UNLESS OTHERWISE SPECIFIED.
 15. ALL WALLS SHALL BE FINISHED WITH CMU BLOCK UNLESS OTHERWISE SPECIFIED.

BRANDON ARCHITECTS
 114 ALVARADO DRIVE, SUITE 204
 SAN JOSE, CA 95128
 408.949.0000

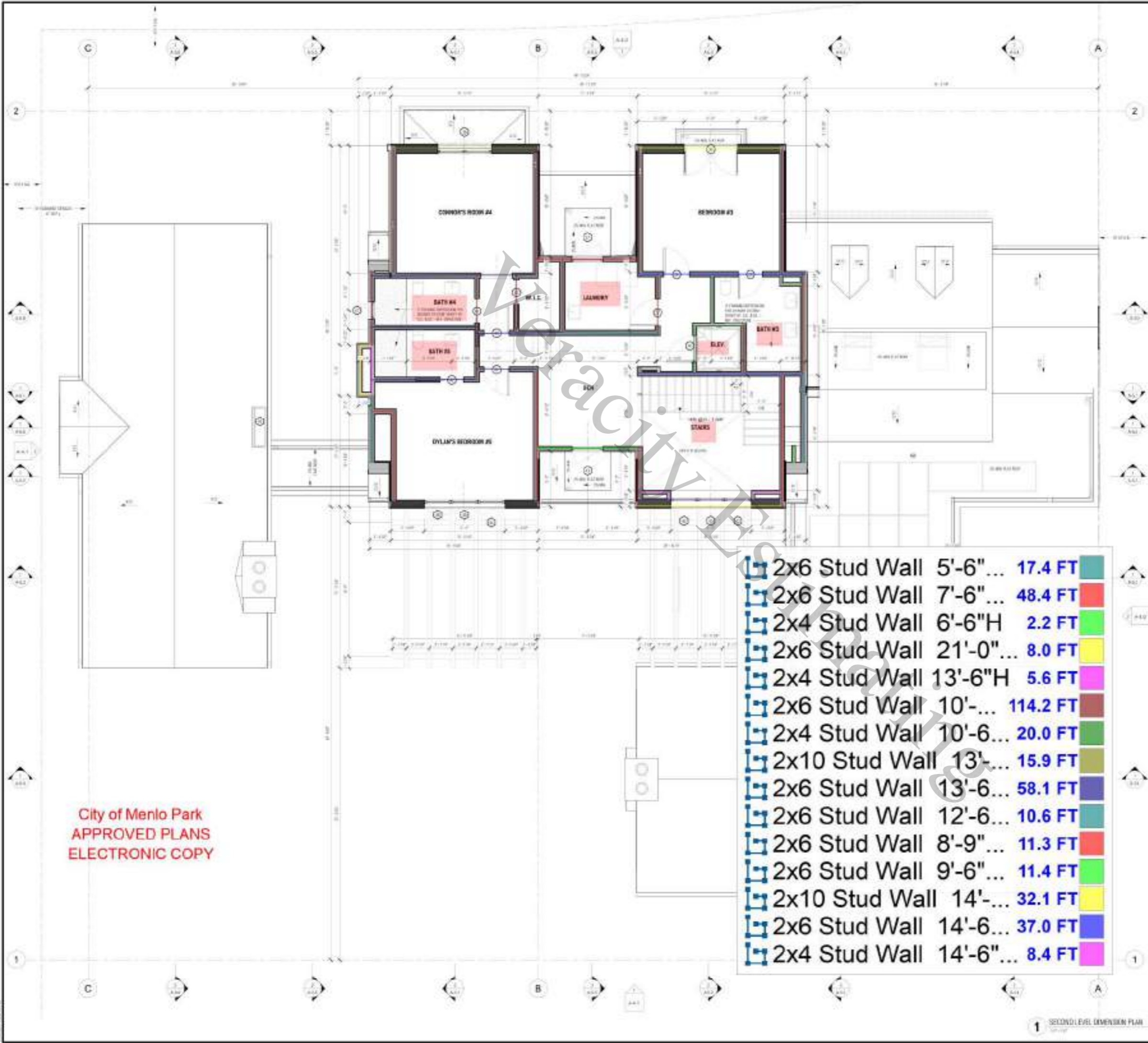
PROJECT DATA:
 PROJECT: [REDACTED]
 PLAN SHEET NO: [REDACTED]

PROJECT OWNER:
 [REDACTED]



2x8 Stud Wall 10'-6" ...	92.6 FT
2x10 Stud Wall 12'-6" ...	18.8 FT
2x6 Stud Wall 17'-0" h	70.7 FT
2x8 Stud Wall 16'-0" ...	42.5 FT
2x6 Stud Wall 10'-6" ...	167.2 FT
2x4 Stud Wall 10'-6" h	91.6 FT
2x10 Stud Wall 10'-6" ...	49.9 FT
2x4 Stud Wall 14'-9" h	16.1 FT
2x6 Stud Wall 12'-6" ...	27.8 FT
2x4 Stud Wall 11'-6" h	21.9 FT
2x6 Stud Wall 11'-6" h	22.5 FT
2x6 Stud Wall 12'-6" h	97.5 FT
2x4 Stud Wall 12'-6" h	16.1 FT
2x4 Stud Wall 8'-9" h	10.3 FT
2x4 Stud Wall 14'-0" H	9.7 FT
2x4 Stud Wall 7'-0" H	9.9 FT
2x4 Stud Wall 21'-0" H	19.9 FT
2x8 Stud Wall 11'-0" ...	11.5 FT
2x8 Stud Wall 12'-0" ...	23.7 FT
2x4 Stud Wall 18'-0" H	10.7 FT
2x6 Stud Wall 10'-6" ...	34.0 FT
2x8 Stud Wall 10'-6" h ...	9.3 FT
2x6 Stud Wall 12'-6" ...	18.8 FT
Wall Base A2.4	236.9 FT

City of Menlo Park
 APPROVED PLANS
 ELECTRONIC COPY



GENERAL NOTES:

1. ALL DIMENSIONS ARE TO FACE UNLESS NOTED OTHERWISE.
2. ROOM FINISHES TO BE DETERMINED BY THE ARCHITECT.
3. ALL FINISHES TO BE DETERMINED BY THE ARCHITECT.
4. ALL DIMENSIONS ARE TO FACE UNLESS NOTED OTHERWISE.
5. ALL DIMENSIONS ARE TO FACE UNLESS NOTED OTHERWISE.

GENERAL NOTES:

ROOM NAME:

- 2x6 Stud Wall 5'-6" ... 17.4 FT
- 2x6 Stud Wall 7'-6" ... 48.4 FT
- 2x4 Stud Wall 6'-6"H ... 2.2 FT
- 2x6 Stud Wall 21'-0" ... 8.0 FT
- 2x4 Stud Wall 13'-6"H ... 5.6 FT
- 2x6 Stud Wall 10'-... 114.2 FT
- 2x4 Stud Wall 10'-6... 20.0 FT
- 2x10 Stud Wall 13'-... 15.9 FT
- 2x6 Stud Wall 13'-6... 58.1 FT
- 2x6 Stud Wall 12'-6... 10.6 FT
- 2x6 Stud Wall 8'-9" ... 11.3 FT
- 2x6 Stud Wall 9'-6" ... 11.4 FT
- 2x10 Stud Wall 14'-... 32.1 FT
- 2x6 Stud Wall 14'-6... 37.0 FT
- 2x4 Stud Wall 14'-6" ... 8.4 FT

2x6 Stud Wall	5'-6"	17.4 FT
2x6 Stud Wall	7'-6"	48.4 FT
2x4 Stud Wall	6'-6"H	2.2 FT
2x6 Stud Wall	21'-0"	8.0 FT
2x4 Stud Wall	13'-6"H	5.6 FT
2x6 Stud Wall	10'	114.2 FT
2x4 Stud Wall	10'-6"	20.0 FT
2x10 Stud Wall	13'	15.9 FT
2x6 Stud Wall	13'-6"	58.1 FT
2x6 Stud Wall	12'-6"	10.6 FT
2x6 Stud Wall	8'-9"	11.3 FT
2x6 Stud Wall	9'-6"	11.4 FT
2x10 Stud Wall	14'	32.1 FT
2x6 Stud Wall	14'-6"	37.0 FT
2x4 Stud Wall	14'-6"	8.4 FT

City of Menlo Park
APPROVED PLANS
ELECTRONIC COPY

BRANDON ARCHITECTS
134 ALVARADO, SUITE 504
TAYLOR, CA 94784
925-942-2222

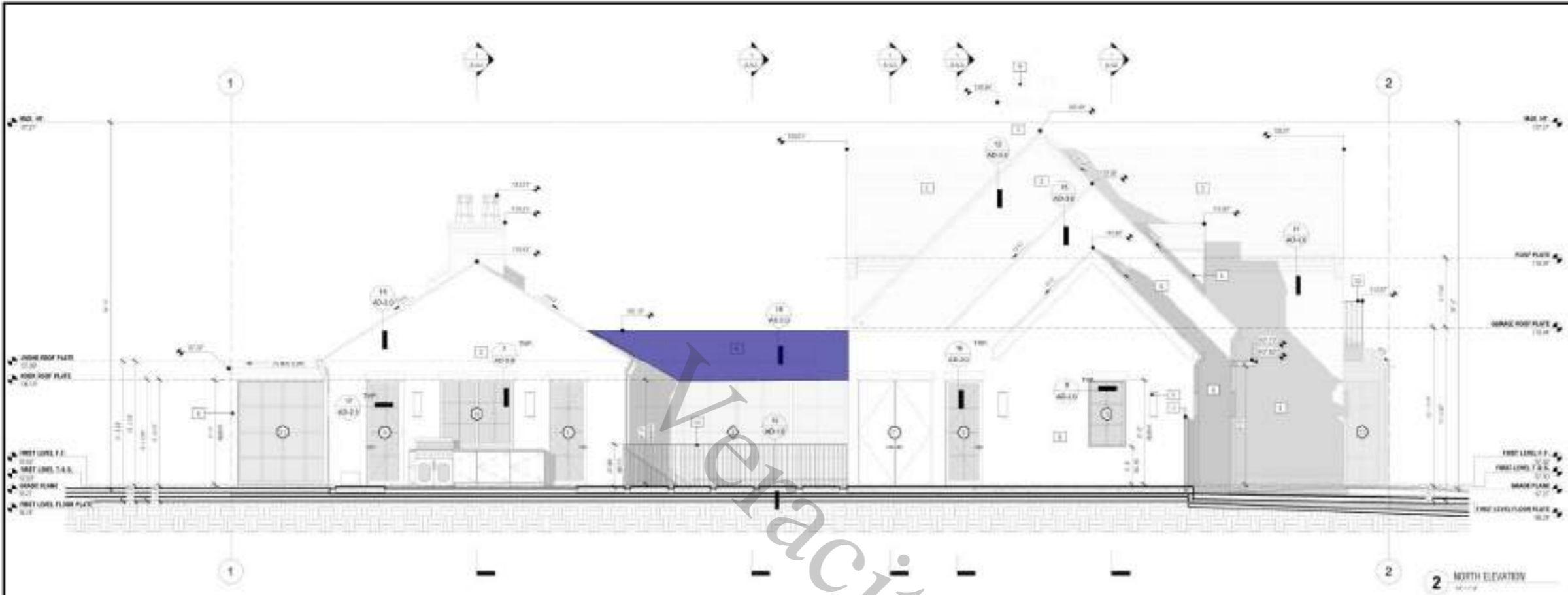
PROJECT DATA:
PROJECT:
PLAN SHEET NO.
SHEET 01502



VERACITY ESTIMATING
Construction Estimating Services

PROJECT ADDRESS:
134 ALVARADO, SUITE 504
TAYLOR, CA 94784

DATE:
12/18/2024



ROOFING & POOLS

ROOFING: ASPHALT/FLY ASPHALT SHINGLES
 GUTTERS: 5" ALUMINUM
 FLASHING: 3" ALUMINUM
 CHIMNEY: 6" DIA. BRICK
 POOLS: NONE

WALLS & CEILING

WALLS: EXTERIOR - 4" CMU
 CEILING: 5/8" PLASTER OVER 1" GYP BOARD

FLOORING

FIRST FLOOR: 3/4" T&G PLYWOOD OVER 1" GYP BOARD
 SECOND FLOOR: 3/4" T&G PLYWOOD OVER 1" GYP BOARD

PAINTS

EXTERIOR: WHITE
 INTERIOR: WHITE

FINISHES

CEILING: 5/8" PLASTER OVER 1" GYP BOARD
 FLOORS: 3/4" T&G PLYWOOD OVER 1" GYP BOARD

BRANDON ARCHITECTS
 115 KALAMAZOO DRIVE, SUITE 104
 MENLO PARK, CA 94025
 TEL: 650.796.4000
 WWW.BRANDONARCHITECTS.COM

PROJECT STATUS
 PERMITS

PLAN NUMBER
 A-4.0

PROJECT OWNER
 CLIENT NAME



DATE
 DATE

City of Menlo Park
 APPROVED PLANS
 ELECTRONIC COPY

T&G Plywood Pa... 71.6 SQ FT

KEYNOTE LEGEND

1. ROOF FINISH: ASPHALT/FLY ASPHALT SHINGLES
2. GUTTERS: 5" ALUMINUM
3. FLASHING: 3" ALUMINUM
4. CHIMNEY: 6" DIA. BRICK
5. WALLS: EXTERIOR - 4" CMU
6. CEILING: 5/8" PLASTER OVER 1" GYP BOARD
7. FLOORS: 3/4" T&G PLYWOOD OVER 1" GYP BOARD
8. PAINTS: EXTERIOR - WHITE, INTERIOR - WHITE
9. FINISHES: CEILING - 5/8" PLASTER OVER 1" GYP BOARD, FLOORS - 3/4" T&G PLYWOOD OVER 1" GYP BOARD
10. POOLS: NONE

MATERIAL SPECIFICATIONS

ROOFING: ASPHALT/FLY ASPHALT SHINGLES
 GUTTERS: 5" ALUMINUM
 FLASHING: 3" ALUMINUM
 CHIMNEY: 6" DIA. BRICK
 WALLS: EXTERIOR - 4" CMU
 CEILING: 5/8" PLASTER OVER 1" GYP BOARD
 FLOORS: 3/4" T&G PLYWOOD OVER 1" GYP BOARD
 PAINTS: EXTERIOR - WHITE, INTERIOR - WHITE
 FINISHES: CEILING - 5/8" PLASTER OVER 1" GYP BOARD, FLOORS - 3/4" T&G PLYWOOD OVER 1" GYP BOARD



VERACITY ESTIMATING
 Construction Estimation Services



PROJECT ADDRESS
 PROJECT ADDRESS

OWNER INFORMATION
 OWNER INFORMATION

DATE
 DATE

ISSUANCE
 ISSUE NUMBER

EXTERIOR ELEVATIONS

A-4.0

- (5'-6"x5'-6") Wood W... 1.0 EA
- (2'-10"x2'-0") Wood ... 2.0 EA
- (1'-3"x2'-9") Wood W... 1.0 EA
- (2'-6"x5'-0") Wood W... 1.0 EA
- (3'-0"x5'-0") Wood W... 3.0 EA
- (3'-0"x8'-6") Wood W... 4.0 EA
- (2'-0"x8'-0") Wood W... 2.0 EA
- (8'-0"x2'-0") Wood W... 1.0 EA
- (3'-0"x5'-6") Wood W... 1.0 EA
- (6'-0"x5'-6") Wood W... 1.0 EA
- (5'-0"x5'-0") Wood W... 2.0 EA
- (7'-6"x8'-6") Wood W... 2.0 EA
- (9'-0"x8'-6") Wood W... 1.0 EA
- (1'-6"x8'-6") Wood W... 2.0 EA
- (3'-0"x6'-0") Wood W... 2.0 EA
- (3'-0"x8'-6") Wood W... 1.0 EA

NO.	LEVEL	DESCRIPTION	ROUGH OPENING WIDTH	HEIGHT	MANUFACTURER	MODEL	MATERIAL	FINISH	T-24 U-FACTOR	S.H.G.C.	GLAZING TYPE	HEAD HT.	COMMENTS
1	1	WOOD WINDOW	5'-6"	5'-6"	ALUMINUM	ALUMINUM	ALUMINUM	ALUMINUM	0.35	0.45	TEMP	1'-0"	
2	1	WOOD WINDOW	2'-10"	2'-0"	ALUMINUM	ALUMINUM	ALUMINUM	ALUMINUM	0.35	0.45	TEMP	1'-0"	
3	1	WOOD WINDOW	1'-3"	2'-9"	ALUMINUM	ALUMINUM	ALUMINUM	ALUMINUM	0.35	0.45	TEMP	1'-0"	
4	1	WOOD WINDOW	2'-6"	5'-0"	ALUMINUM	ALUMINUM	ALUMINUM	ALUMINUM	0.35	0.45	TEMP	1'-0"	
5	1	WOOD WINDOW	3'-0"	5'-0"	ALUMINUM	ALUMINUM	ALUMINUM	ALUMINUM	0.35	0.45	TEMP	1'-0"	
6	1	WOOD WINDOW	3'-0"	8'-6"	ALUMINUM	ALUMINUM	ALUMINUM	ALUMINUM	0.35	0.45	TEMP	1'-0"	
7	1	WOOD WINDOW	2'-0"	8'-0"	ALUMINUM	ALUMINUM	ALUMINUM	ALUMINUM	0.35	0.45	TEMP	1'-0"	
8	1	WOOD WINDOW	8'-0"	2'-0"	ALUMINUM	ALUMINUM	ALUMINUM	ALUMINUM	0.35	0.45	TEMP	1'-0"	
9	1	WOOD WINDOW	3'-0"	5'-6"	ALUMINUM	ALUMINUM	ALUMINUM	ALUMINUM	0.35	0.45	TEMP	1'-0"	
10	1	WOOD WINDOW	6'-0"	5'-6"	ALUMINUM	ALUMINUM	ALUMINUM	ALUMINUM	0.35	0.45	TEMP	1'-0"	
11	1	WOOD WINDOW	5'-0"	5'-0"	ALUMINUM	ALUMINUM	ALUMINUM	ALUMINUM	0.35	0.45	TEMP	1'-0"	
12	1	WOOD WINDOW	7'-6"	8'-6"	ALUMINUM	ALUMINUM	ALUMINUM	ALUMINUM	0.35	0.45	TEMP	1'-0"	
13	1	WOOD WINDOW	9'-0"	8'-6"	ALUMINUM	ALUMINUM	ALUMINUM	ALUMINUM	0.35	0.45	TEMP	1'-0"	
14	1	WOOD WINDOW	1'-6"	8'-6"	ALUMINUM	ALUMINUM	ALUMINUM	ALUMINUM	0.35	0.45	TEMP	1'-0"	
15	1	WOOD WINDOW	3'-0"	6'-0"	ALUMINUM	ALUMINUM	ALUMINUM	ALUMINUM	0.35	0.45	TEMP	1'-0"	
16	1	WOOD WINDOW	3'-0"	8'-6"	ALUMINUM	ALUMINUM	ALUMINUM	ALUMINUM	0.35	0.45	TEMP	1'-0"	

NO.	LEVEL	DESCRIPTION	WIDTH	HEIGHT	MANUFACTURER	MODEL	GLAZING	RATING	T-24 U-FACTOR	S.H.G.C.	DOOR FRAME	COMMENTS
1	1	WOOD DOOR	3'-0"	7'-0"	ALUMINUM	ALUMINUM	ALUMINUM	ALUMINUM	0.35	0.45	TEMP	
2	1	WOOD DOOR	3'-0"	7'-0"	ALUMINUM	ALUMINUM	ALUMINUM	ALUMINUM	0.35	0.45	TEMP	
3	1	WOOD DOOR	3'-0"	7'-0"	ALUMINUM	ALUMINUM	ALUMINUM	ALUMINUM	0.35	0.45	TEMP	
4	1	WOOD DOOR	3'-0"	7'-0"	ALUMINUM	ALUMINUM	ALUMINUM	ALUMINUM	0.35	0.45	TEMP	
5	1	WOOD DOOR	3'-0"	7'-0"	ALUMINUM	ALUMINUM	ALUMINUM	ALUMINUM	0.35	0.45	TEMP	
6	1	WOOD DOOR	3'-0"	7'-0"	ALUMINUM	ALUMINUM	ALUMINUM	ALUMINUM	0.35	0.45	TEMP	
7	1	WOOD DOOR	3'-0"	7'-0"	ALUMINUM	ALUMINUM	ALUMINUM	ALUMINUM	0.35	0.45	TEMP	
8	1	WOOD DOOR	3'-0"	7'-0"	ALUMINUM	ALUMINUM	ALUMINUM	ALUMINUM	0.35	0.45	TEMP	
9	1	WOOD DOOR	3'-0"	7'-0"	ALUMINUM	ALUMINUM	ALUMINUM	ALUMINUM	0.35	0.45	TEMP	
10	1	WOOD DOOR	3'-0"	7'-0"	ALUMINUM	ALUMINUM	ALUMINUM	ALUMINUM	0.35	0.45	TEMP	
11	1	WOOD DOOR	3'-0"	7'-0"	ALUMINUM	ALUMINUM	ALUMINUM	ALUMINUM	0.35	0.45	TEMP	
12	1	WOOD DOOR	3'-0"	7'-0"	ALUMINUM	ALUMINUM	ALUMINUM	ALUMINUM	0.35	0.45	TEMP	
13	1	WOOD DOOR	3'-0"	7'-0"	ALUMINUM	ALUMINUM	ALUMINUM	ALUMINUM	0.35	0.45	TEMP	
14	1	WOOD DOOR	3'-0"	7'-0"	ALUMINUM	ALUMINUM	ALUMINUM	ALUMINUM	0.35	0.45	TEMP	
15	1	WOOD DOOR	3'-0"	7'-0"	ALUMINUM	ALUMINUM	ALUMINUM	ALUMINUM	0.35	0.45	TEMP	
16	1	WOOD DOOR	3'-0"	7'-0"	ALUMINUM	ALUMINUM	ALUMINUM	ALUMINUM	0.35	0.45	TEMP	
17	1	WOOD DOOR	3'-0"	7'-0"	ALUMINUM	ALUMINUM	ALUMINUM	ALUMINUM	0.35	0.45	TEMP	
18	1	WOOD DOOR	3'-0"	7'-0"	ALUMINUM	ALUMINUM	ALUMINUM	ALUMINUM	0.35	0.45	TEMP	
19	1	WOOD DOOR	3'-0"	7'-0"	ALUMINUM	ALUMINUM	ALUMINUM	ALUMINUM	0.35	0.45	TEMP	
20	1	WOOD DOOR	3'-0"	7'-0"	ALUMINUM	ALUMINUM	ALUMINUM	ALUMINUM	0.35	0.45	TEMP	
21	1	WOOD DOOR	3'-0"	7'-0"	ALUMINUM	ALUMINUM	ALUMINUM	ALUMINUM	0.35	0.45	TEMP	
22	1	WOOD DOOR	3'-0"	7'-0"	ALUMINUM	ALUMINUM	ALUMINUM	ALUMINUM	0.35	0.45	TEMP	
23	1	WOOD DOOR	3'-0"	7'-0"	ALUMINUM	ALUMINUM	ALUMINUM	ALUMINUM	0.35	0.45	TEMP	
24	1	WOOD DOOR	3'-0"	7'-0"	ALUMINUM	ALUMINUM	ALUMINUM	ALUMINUM	0.35	0.45	TEMP	
25	1	WOOD DOOR	3'-0"	7'-0"	ALUMINUM	ALUMINUM	ALUMINUM	ALUMINUM	0.35	0.45	TEMP	
26	1	WOOD DOOR	3'-0"	7'-0"	ALUMINUM	ALUMINUM	ALUMINUM	ALUMINUM	0.35	0.45	TEMP	
27	1	WOOD DOOR	3'-0"	7'-0"	ALUMINUM	ALUMINUM	ALUMINUM	ALUMINUM	0.35	0.45	TEMP	
28	1	WOOD DOOR	3'-0"	7'-0"	ALUMINUM	ALUMINUM	ALUMINUM	ALUMINUM	0.35	0.45	TEMP	
29	1	WOOD DOOR	3'-0"	7'-0"	ALUMINUM	ALUMINUM	ALUMINUM	ALUMINUM	0.35	0.45	TEMP	
30	1	WOOD DOOR	3'-0"	7'-0"	ALUMINUM	ALUMINUM	ALUMINUM	ALUMINUM	0.35	0.45	TEMP	
31	1	WOOD DOOR	3'-0"	7'-0"	ALUMINUM	ALUMINUM	ALUMINUM	ALUMINUM	0.35	0.45	TEMP	
32	1	WOOD DOOR	3'-0"	7'-0"	ALUMINUM	ALUMINUM	ALUMINUM	ALUMINUM	0.35	0.45	TEMP	
33	1	WOOD DOOR	3'-0"	7'-0"	ALUMINUM	ALUMINUM	ALUMINUM	ALUMINUM	0.35	0.45	TEMP	
34	1	WOOD DOOR	3'-0"	7'-0"	ALUMINUM	ALUMINUM	ALUMINUM	ALUMINUM	0.35	0.45	TEMP	
35	1	WOOD DOOR	3'-0"	7'-0"	ALUMINUM	ALUMINUM	ALUMINUM	ALUMINUM	0.35	0.45	TEMP	
36	1	WOOD DOOR	3'-0"	7'-0"	ALUMINUM	ALUMINUM	ALUMINUM	ALUMINUM	0.35	0.45	TEMP	
37	1	WOOD DOOR	3'-0"	7'-0"	ALUMINUM	ALUMINUM	ALUMINUM	ALUMINUM	0.35	0.45	TEMP	
38	1	WOOD DOOR	3'-0"	7'-0"	ALUMINUM	ALUMINUM	ALUMINUM	ALUMINUM	0.35	0.45	TEMP	
39	1	WOOD DOOR	3'-0"	7'-0"	ALUMINUM	ALUMINUM	ALUMINUM	ALUMINUM	0.35	0.45	TEMP	
40	1	WOOD DOOR	3'-0"	7'-0"	ALUMINUM	ALUMINUM	ALUMINUM	ALUMINUM	0.35	0.45	TEMP	
41	1	WOOD DOOR	3'-0"	7'-0"	ALUMINUM	ALUMINUM	ALUMINUM	ALUMINUM	0.35	0.45	TEMP	
42	1	WOOD DOOR	3'-0"	7'-0"	ALUMINUM	ALUMINUM	ALUMINUM	ALUMINUM	0.35	0.45	TEMP	
43	1	WOOD DOOR	3'-0"	7'-0"	ALUMINUM	ALUMINUM	ALUMINUM	ALUMINUM	0.35	0.45	TEMP	
44	1	WOOD DOOR	3'-0"	7'-0"	ALUMINUM	ALUMINUM	ALUMINUM	ALUMINUM	0.35	0.45	TEMP	
45	1	WOOD DOOR	3'-0"	7'-0"	ALUMINUM	ALUMINUM	ALUMINUM	ALUMINUM	0.35	0.45	TEMP	
46	1	WOOD DOOR	3'-0"	7'-0"	ALUMINUM	ALUMINUM	ALUMINUM	ALUMINUM	0.35	0.45	TEMP	
47	1	WOOD DOOR	3'-0"	7'-0"	ALUMINUM	ALUMINUM	ALUMINUM	ALUMINUM	0.35	0.45	TEMP	
48	1	WOOD DOOR	3'-0"	7'-0"	ALUMINUM	ALUMINUM	ALUMINUM	ALUMINUM	0.35	0.45	TEMP	
49	1	WOOD DOOR	3'-0"	7'-0"	ALUMINUM	ALUMINUM	ALUMINUM	ALUMINUM	0.35	0.45	TEMP	
50	1	WOOD DOOR	3'-0"	7'-0"	ALUMINUM	ALUMINUM	ALUMINUM	ALUMINUM	0.35	0.45	TEMP	
51	1	WOOD DOOR	3'-0"	7'-0"	ALUMINUM	ALUMINUM	ALUMINUM	ALUMINUM	0.35	0.45	TEMP	
52	1	WOOD DOOR	3'-0"	7'-0"	ALUMINUM	ALUMINUM	ALUMINUM	ALUMINUM	0.35	0.45	TEMP	
53	1	WOOD DOOR	3'-0"	7'-0"	ALUMINUM	ALUMINUM	ALUMINUM	ALUMINUM	0.35	0.45	TEMP	
54	1	WOOD DOOR	3'-0"	7'-0"	ALUMINUM	ALUMINUM	ALUMINUM	ALUMINUM	0.35	0.45	TEMP	
55	1	WOOD DOOR	3'-0"	7'-0"	ALUMINUM	ALUMINUM	ALUMINUM	ALUMINUM	0.35	0.45	TEMP	
56	1	WOOD DOOR	3'-0"	7'-0"	ALUMINUM	ALUMINUM	ALUMINUM	ALUMINUM	0.35	0.45	TEMP	
57	1	WOOD DOOR	3'-0"	7'-0"	ALUMINUM	ALUMINUM	ALUMINUM	ALUMINUM	0.35	0.45	TEMP	
58	1	WOOD DOOR	3'-0"	7'-0"	ALUMINUM	ALUMINUM	ALUMINUM	ALUMINUM	0.35	0.45	TEMP	
59	1	WOOD DOOR	3'-0"	7'-0"	ALUMINUM	ALUMINUM	ALUMINUM	ALUMINUM	0.35	0.45	TEMP	
60	1	WOOD DOOR	3'-0"	7'-0"	ALUMINUM	ALUMINUM	ALUMINUM	ALUMINUM	0.35	0.45	TEMP	
61	1	WOOD DOOR	3'-0"	7'-0"	ALUMINUM	ALUMINUM	ALUMINUM	ALUMINUM	0.35	0.45	TEMP	
62	1	WOOD DOOR	3'-0"	7'-0"	ALUMINUM	ALUMINUM	ALUMINUM	ALUMINUM	0.35	0.45	TEMP	
63	1	WOOD DOOR	3'-0"	7'-0"	ALUMINUM	ALUMINUM	ALUMINUM	ALUMINUM	0.35	0.45	TEMP	
64	1	WOOD DOOR	3'-0"	7'-0"	ALUMINUM	ALUMINUM	ALUMINUM	ALUMINUM	0.35	0.45	TEMP	
65	1	WOOD DOOR	3'-0"	7'-0"	ALUMINUM	ALUMINUM	ALUMINUM	ALUMINUM	0.35	0.45	TEMP	
66	1	WOOD DOOR	3'-0"	7'-0"	ALUMINUM	ALUMINUM	ALUMINUM	ALUMINUM	0.35	0.45	TEMP	
67	1	WOOD DOOR	3'-0"	7'-0"	ALUMINUM	ALUMINUM	ALUMINUM	ALUMINUM	0.35	0.45	TEMP	
68	1	WOOD DOOR	3'-0"	7'-0"	ALUMINUM	ALUMINUM	ALUMINUM	ALUMINUM	0.35	0.45	TEMP	
69	1	WOOD DOOR	3'-0"	7'-0"	ALUMINUM	ALUMINUM	ALUMINUM	ALUMINUM	0.35	0.45	TEMP	
70	1	WOOD DOOR	3'-0"	7'-0"	ALUMINUM	ALUMINUM	ALUMINUM	ALUMINUM	0.35	0.45	TEMP	

NO.	LEVEL	ROUGH OPENING (FIELD VERIFY)	WIDTH	HEIGHT	AREA	MANUFACTURER	MODEL	T-24 U-FACTOR	S.H.G.C.	GLAZING	COMMENTS
1	1	WOOD WINDOW	5'-6"	5'-6"	31.32	ALUMINUM	ALUMINUM	0.35	0.45	TEMP	
2	1	WOOD WINDOW	2'-10"	2'-0"	3.70	ALUMINUM	ALUMINUM	0.35	0.45	TEMP	
3	1	WOOD WINDOW	1'-3"	2'-9"	3.04	ALUMINUM	ALUMINUM	0.35	0.45	TEMP	
4	1	WOOD WINDOW	2'-6"	5'-0"	13.50	ALUMINUM	ALUMINUM	0.35	0.45	TEMP	
5	1	WOOD WINDOW	3'-0"	5'-0"	15.00	ALUMINUM	ALUMINUM	0.35	0.45	TEMP	
6	1	WOOD WINDOW	3'-0"	8'-6"	25.31	ALUMINUM	ALUMINUM	0.35	0.45	TEMP	
7	1	WOOD WINDOW	2'-0"	8'-0"	16.00	ALUMINUM	ALUMINUM	0.35	0.45	TEMP	
8	1	WOOD WINDOW	8'-0"	2'-0"	16.00	ALUMINUM	ALUMINUM	0.35	0.45	TEMP	
9	1	WOOD WINDOW	3'-0"	5'-6"	16.50	ALUMINUM	ALUMINUM	0.35	0.45	TEMP	
10	1	WOOD WINDOW	6'-0"	5'-6"	33.00	ALUMINUM	ALUMINUM	0.35	0.45	TEMP	
11	1	WOOD WINDOW	5'-0"	5'-0"	25.00	ALUMINUM	ALUMINUM	0.35	0.45	TEMP	
12	1	WOOD WINDOW	7'-6"	8'-6"	65.70	ALUMINUM	ALUMINUM	0.35	0.45	TEMP	
13	1	WOOD WINDOW	9'-0"	8'-6"	77.40	ALUMINUM	ALUMINUM	0.35	0.45	TEMP	
14	1	WOOD WINDOW	1'-6"	8'-6"	13.50	ALUMINUM	ALUMINUM	0.35	0.45	TEMP	
15	1	WOOD WINDOW	3'-0"	6'-0"	18.00	ALUMINUM	ALUMINUM	0.35	0.45	TEMP	
16	1	WOOD WINDOW	3'-0"	8'-6"	25.31	ALUMINUM	ALUMINUM	0.35	0.45	TEMP	

BRANDON ARCHITECTS
114 ALVARADO DRIVE, SUITE 204
DUBLIN, CA 94568
TEL: 925.835.4000
WWW.BRANDONARCHITECTS.COM

PROJECT DATA
PROJECT: 10000
PLAN SHEET NO.: A-7.0
DATE: 10/20/2023

PROJECT OWNER
CITY OF MENLO PARK

VERACITY ESTIMATING
Construction Estimating Services

PROJECT ADDRESS
10000
DUBLIN, CA 94568

DATE
10/20/2023

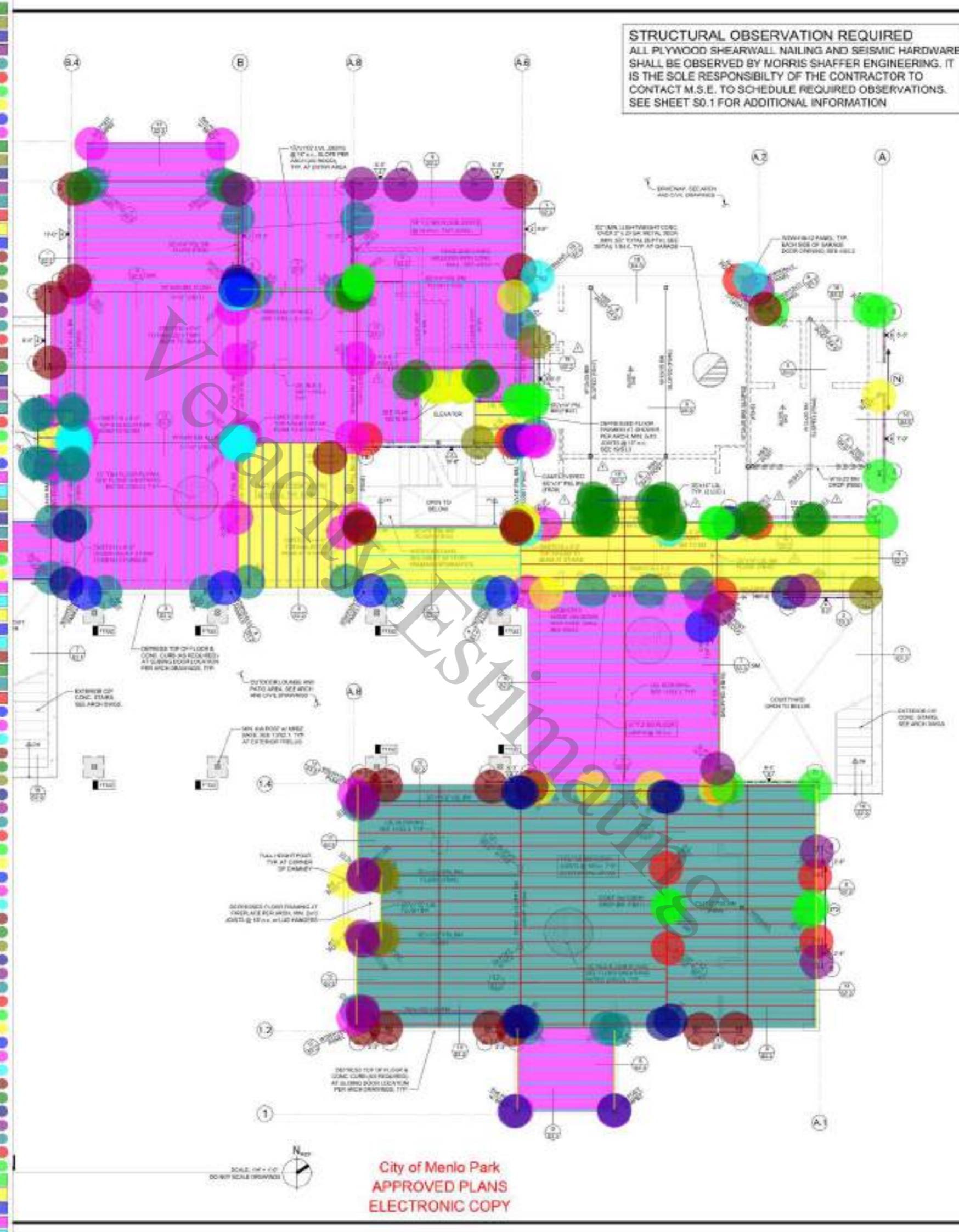
GENERAL NOTES

DOOR & WINDOW SCHEDULE

A-7.0

City of Menlo Park
APPROVED PLANS
ELECTRONIC COPY

6	10'-6" h	59.8 FT
6	21'-6" h	7.7 FT
4	16'-0" h	14.1 FT
4	10'-6" h	55.8 FT
4x6 Post (10'-6" H)	4.0 EA	
4x6 Post (16'-0" H)	4.0 EA	
4x6 Post (17'-0" H)	2.0 EA	
4x6 Post (21'-0" H)	4.0 EA	
4x6 Post (14'-0" H)	2.0 EA	
6x6 Post (10'-6" H)	13.0 EA	
3-1/2"x14" LSL Beam	139.0 FT	
5-1/4"x14" PSL Beam	122.9 FT	
3-1/2"x11-7/8" PSL Beam	6.0 FT	
3-1/2"x14" PSL Beam	116.0 FT	
5-1/4"x11-1/4" PSL Header	11.0 FT	
6x10 DF Header	53.0 FT	
2x10 Floor Joist @ 16" O.C. & 5/8" CDX Plywood Sheathing	1112.90 FT	
Standard Joist	81.0 FT	
"HDU5" Holdown	18.0 EA	
"HDU2" Holdown	3.0 EA	
"T4b" CMSTC16 (4690#) 20" Length	6.0 EA	
CMSTC16 Strap 6" Length	4.0 EA	
WSWH 24x12 Panel	3.0 EA	
"CCQ46" Tie Simpson	1.0 EA	
"ECCQ46" Simpson	2.0 EA	
1-3/4" LSL Blocking W/ 8d Toenails	245.9 FT	
"HU414" Holdown	4.0 EA	
3	10'-6" h	54.6 FT
6	12'-6" h	39.8 FT
2	16'-0" h	6.2 FT
6x6 Post (12'-6" H)	4.0 EA	
4x6 Post (11'-0" H)	2.0 EA	
4x6 Post (12'-6" H)	5.0 EA	
6x6 Post (14'-0" H)	2.0 EA	
7"x14" PSL Beam	30.1 FT	
5-1/4"x18" PSL Beam	51.0 FT	
7"x11-7/8" PSL Beam	16.0 FT	
3-1/2"x11-7/8" LSL Beam	39.0 FT	
5-1/4"x11-7/8" PSL Header	32.0 FT	
6x12 DF Header	7.0 FT	
1-3/4"x11-7/8" LVL Vertical Post (10'-6" H)	2.0 EA	
2x4 King Stud (10'-6" H)	4.0 EA	
1-3/4"x11-1/4" LVL Joist @ 16" O.C. & 1-1/8" T&G Floor Plywo...	1224.90 FT	
Standard Joist	88.0 FT	
14" TJI 360 Floor Joist @ 19.2" O.C. & 1-1/8" T&G Floor Plyw...	609.90 FT	
Standard Joist	120.0 FT	
Standard Joist	90.0 FT	
Standard Joist	126.0 FT	
Standard Joist	96.0 FT	
11-7/8" TJI 360 Floor Joist @ 16" O.C. & 1-1/8" T&G Floor Ply...	1040.80 FT	
Standard Joist	905.0 FT	
WSWH 24x10 Panel	4.0 EA	
WSWH 18x11 Panel	2.0 EA	
WSWH 18x12 Panel	2.0 EA	
WSWH 12x11 Panel	1.0 EA	
WSWH 18x10 Panel	2.0 EA	
WSWH 24x10 Panel	2.0 EA	
"MSTC48B3" 21" L	4.0 EA	
"HDU8" Holdown (6970#)	7.0 EA	
"MASTC86B3Z" 21" L	1.0 EA	
"T9" CMST12 39" L	2.0 EA	
"HDU2" Holdown (3075#)	5.0 EA	
"HDQ8" Horizontal Holdown	2.0 EA	
"CMSTC16" 10'L	1.0 EA	
"CMSTC16" 6'L	6.0 EA	
"CMSTC16" 4'L	2.0 EA	
"CS16" 4'L	4.0 EA	
"HU412" Holdown	8.0 EA	
"HU610" Holdown	8.0 EA	
"ECCQ46" Simpson	3.0 EA	
"ECCLLQ46" Simpson	1.0 EA	
"PCZ66" Simpson	2.0 EA	
"HGLTV7" Simpson	4.0 EA	
"EGQ5.3746" Simpson	4.0 EA	
"CCTQ46" Simpson	1.0 EA	
"HUCQ612" Simpson	2.0 EA	
"HGUS7.25/14" Simpson	10.0 EA	
"BA3.56/14" Simpson	4.0 EA	
Shear Plate 3/8" W/ (3) 3/4" A325N Bolts In Horizontal	22.0 EA	
"MPBZ66" Simpson	2.0 EA	
"HB5.50/11.88" Simpson	8.0 EA	
"HUC412" Simpson	9.0 EA	
"HHGU5.50" Simpson	2.0 EA	
"HHUS410"	8.0 EA	
2x6 Blocking	11.3 FT	
2x12 PT Rim Plate W/ 5/8" Dia Anchor Bolts	62.8 FT	
1-3/4" LVL Blocking	6.6 FT	
14" TJI 360 Floor Joist @ 16" O.C. & 1-1/8" T&G Floor Plywo...	2637.00 FT	



STRUCTURAL OBSERVATION REQUIRED
 ALL PLYWOOD SHEARWALL, NAILING AND SEISMIC HARDWARE SHALL BE OBSERVED BY MORRIS SHAFFER ENGINEERING. IT IS THE SOLE RESPONSIBILITY OF THE CONTRACTOR TO CONTACT M.S.E. TO SCHEDULE REQUIRED OBSERVATIONS. SEE SHEET S0.1 FOR ADDITIONAL INFORMATION

FRAMING PLAN NOTES

- SEE SHEET S0.1 FOR GENERAL STRUCTURAL NOTES AND APPROVALS AND SHEETS S0.1, S0.2, S0.3 AND S0.4 FOR TYPICAL FRAMING DETAILS.
- ALL REINFORCING AND ENCASED STEEL ITEMS SHALL BE EXACTLY ATTACHED TO FORMATION OR FULLY SHOWN FROM TOP DOWNHETE PLACEMENT.
- ALL FOOTING DEPTHS AND SPACING APPROXIMATE AND THE FINAL DEPTH SHALL BE DETERMINED BY THE GEOTECHNICAL ENGINEER AT THE TIME OF OBSERVATION.
- ALL BRACING SHALL BE 80% WEIGHT AT 20% RIGIDITY AND SUPPORT AT 20% WALL'S LINE. BRACING SHALL BE PLACED AS SHOWN AND NOT TO BE PLACED IN THE WALLS UNLESS SHOWN OTHERWISE. THE SIZE AND SPACING SHALL BE AS SHOWN.
- ALL EXTERIOR WALLS AND SHEAR WALLS SHALL HAVE CONTINUOUS TOP PLATES PER ARCH. DRAWING UNLESS OTHERWISE NOTED. A STRAP IS REQUIRED AT THE BRIM IN THE PLATES.
- CONTRACTOR IS RESPONSIBLE FOR ALL WORKING AND BRACING DURING CONSTRUCTION LAYS. ALL FINAL CONNECTIONS HAVE BEEN COMPLETED IN ACCORDANCE WITH THE STRUCTURAL DRAWINGS.
- DO NOT SCALE DRAWINGS. SCALE IS FOR REFERENCE ONLY. ALL DIMENSIONS SHOWN ON THE STRUCTURAL PLANS ARE FOR GENERAL INFORMATION ONLY AND SHALL BE VERIFIED BY THE CONTRACTOR PRIOR TO CONSTRUCTION.
- VERIFY ALL DIMENSIONS WITH ARCHITECTURAL DRAWINGS BEFORE PROCEEDING WITH FRAMING. WHEN ALL DIMENSIONS ARE TO THE CENTER OF THE MEMBER AND ARCHITECT PRIOR TO PROCEEDING WITH FRAMING.
- PROVIDE 1/2" DIA. LVL VERTICAL POSTS AT ALL DOOR THRESHOLDS PER ARCH. DRAWING. TYP. AT ALL DOOR THRESHOLDS.

FRAMING LEGEND

- SOLID WOOD WALLS ON FLOOR LEVEL. ALL EXTERIOR WALLS SHALL BE BRACED AS SHOWN.
- WALLS BUILT BY OTHER TRADES.
- POST ABOVE AND BELOW MATCH WALL THICKNESS PER ARCH. DRAWING.
- POST ABOVE MATCH WALL THICKNESS PER ARCH. DRAWING.
- 4x4 POST ABOVE AND BELOW.
- FRAMING MEMBER AT TOP PLATE. HANGING BOARD SHOWN ABOVE.
- FLOOR JOIST AT BRIM TO TOP OF SHEAR WALL (TYP).
- WALLS FRAMED BELOW THE PLAN.
- STRAP CONNECTIONS SHALL BE TO THE CENTER OF THE MEMBER AND ARCHITECT PRIOR TO PROCEEDING WITH FRAMING.
- BRACING WALLS AND MAXIMUM LENGTH DEPENDS ON OUTSIDE EDGE TO OUTSIDE EDGE OF HOLDOWN POST. SEE SHEET S0.1 FOR DETAILS AND FOR REQUIREMENTS.
- POST IS MAXIMUM LENGTH OF 8' OR LESS UNLESS OTHERWISE NOTED. SEE HOLDOWN SCHEDULE (TYP.).
- DETACHED FRAMING FACTORY BUILT PANEL. SEE PLAN FOR TYPE & SIZE.
- SHEARWALL BRACING WITH STRAP ABOVE & BELOW. OTHERWISE, SEE DETAIL.
- OPEN TO BELOW. SEE ARCH. DRAWING.

VERACITY ESTIMATING
 Construction Estimating Services

1585 BAY LAUREL
 MENLO PARK, CA

OMALLEY O

FOOTING SCHEDULE

FOOTING	LENGTH	WIDTH	DEPTH	REINFORCEMENT	DETAILS
FT-1	12'	12"	18"	4#4 BARS	TOP & BOTTOM

1. DETAIL REFERENCES IN TABLE TO TYPICAL DETAIL REFERENCES SPECIFIED IN PROVISIONS AND SUPPLEMENT TO THIS SPECIFICATION. ADDITIONAL DETAILS MAY BE REQUIRED BY E.O. OR GEOTECHNICAL ENGINEER IN FIELD.

2. REFER TO SHEET S0.1 FOR TYPICAL TIE-BACKS, REINFORCING ANCHOR BOLTS AND HOLD-DOWN ANCHORS.

PROFESSIONAL SEAL

MORRIS SHAFFER ENGINEERING

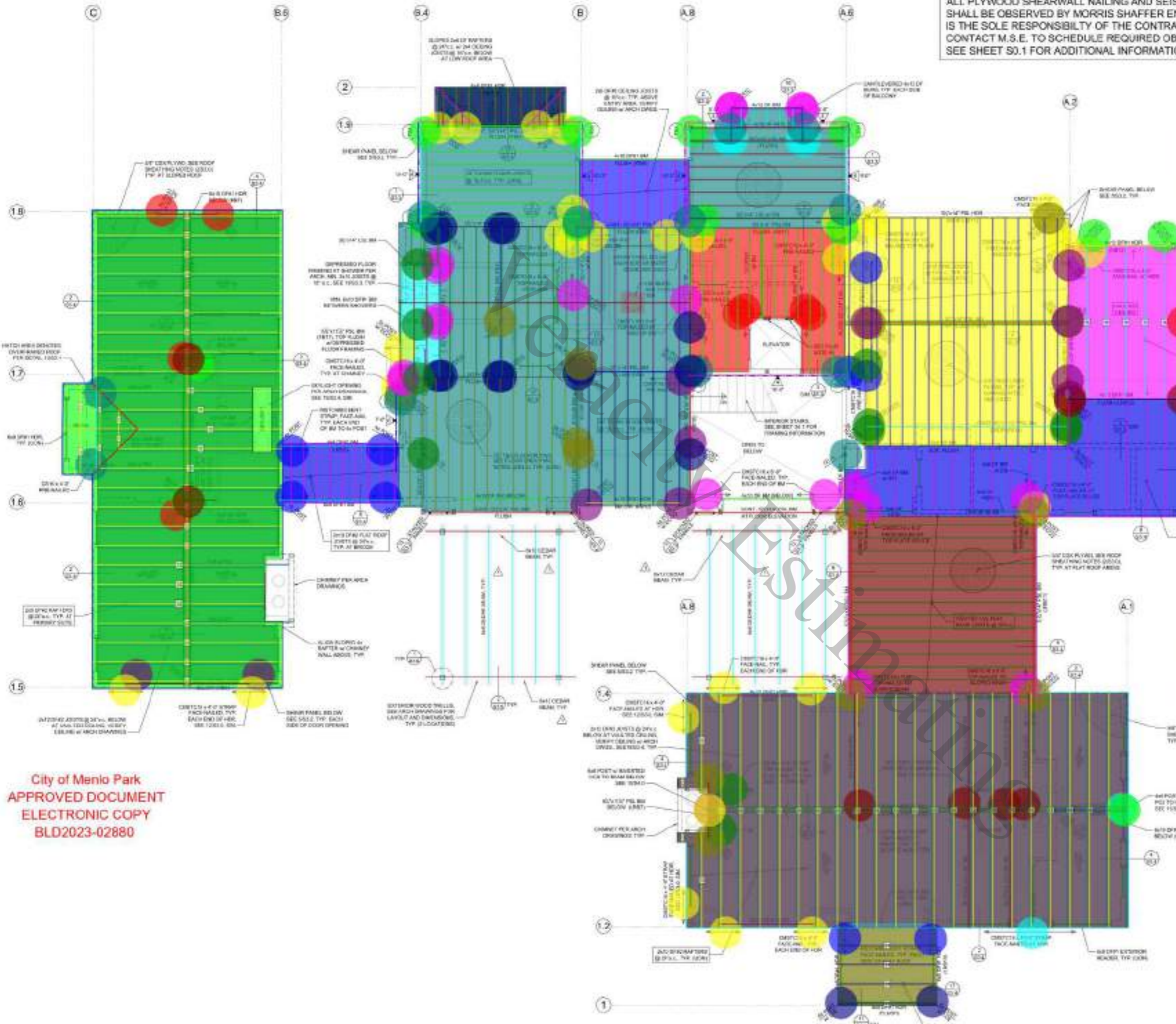
1585 BAY LAUREL
 MENLO PARK, CA 94025
 TEL: 650.321.1234
 FAX: 650.321.1234

DATE: SEPT. 14, 2023

PROJECT: S1.1

City of Menlo Park
 APPROVED PLANS
 ELECTRONIC COPY

STRUCTURAL OBSERVATION REQUI
 ALL PLYWOOD SHEARWALL NAILING AND SEISM SHALL BE OBSERVED BY MORRIS SHAFFER ENG IS THE SOLE RESPONSIBILITY OF THE CONTRACTOR M.S.E. TO SCHEDULE REQUIRED OBS SEE SHEET S0.1 FOR ADDITIONAL INFORMATION



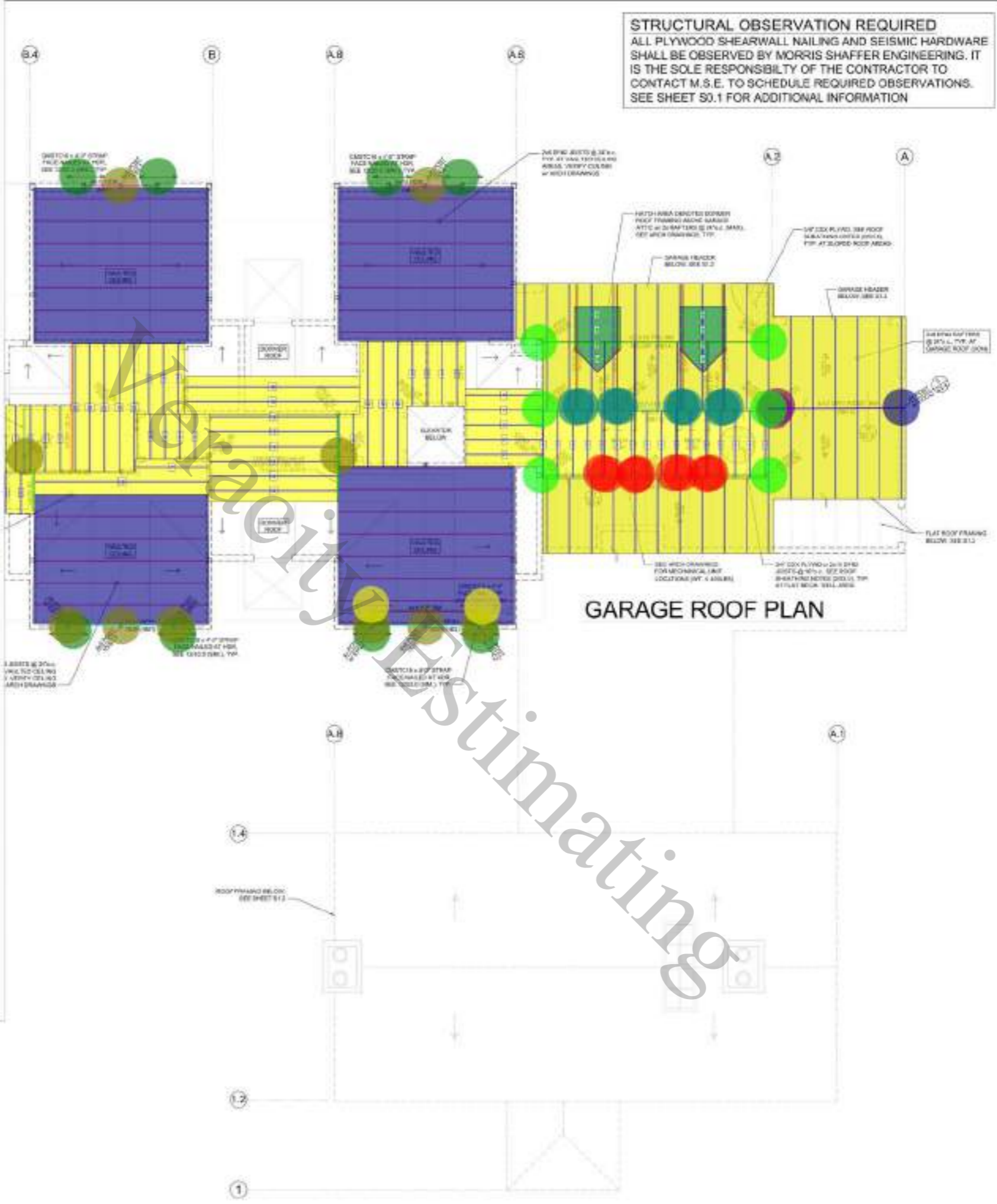
ITEM	DESCRIPTION	QUANTITY	UNIT	PRICE	TOTAL
1	4x6 Post (17'-0" H)	2	EA	100.00	200.00
2	4x6 Post (13'-6" H)	2	EA	100.00	200.00
3	4x6 Post (14'-6" H)	2	EA	100.00	200.00
4	4x6 Post (10'-6" H)	2	EA	100.00	200.00
5	4x6 Post (7'-6" H)	2	EA	100.00	200.00
6	4x6 Post (12'-6" H)	2	EA	100.00	200.00
7	4x6 Post (16'-0" H)	2	EA	100.00	200.00
8	2x4 Stud Wall 7'-0" H	4	LF	15.00	60.00
9	2x4 Stud Wall 15'-0" H	4	LF	15.00	60.00
10	2x8 DF#1 Beam	2	EA	100.00	200.00
11	5-1/4"x11-1/4" PSL Header	2	EA	100.00	200.00
12	6x8 DF#1 Header	2	EA	100.00	200.00
13	6x10 DF#1 Header	2	EA	100.00	200.00
14	3-1/2"x14" LSL Beam	2	EA	100.00	200.00
15	5-1/4"x14" PSL Beam	2	EA	100.00	200.00
16	4x10 DF#1 Beam	2	EA	100.00	200.00
17	6x12 DF#1 Header	2	EA	100.00	200.00
18	3-1/2"x14" PSL Beam	2	EA	100.00	200.00
19	4x8 DF#1 Beam	2	EA	100.00	200.00
20	5-1/4"x11-7/8" PSL Beam	2	EA	100.00	200.00
21	4x10 DF Sloped Beam	2	EA	100.00	200.00
22	6x12 DF#1 Beam	2	EA	100.00	200.00
23	5-1/4"x14" PSL Header	2	EA	100.00	200.00
24	4x12 DF#1 Beam	2	EA	100.00	200.00
25	4x6 DF#1 Header	2	EA	100.00	200.00
26	4x8 Sloped Beam	2	EA	100.00	200.00
27	2x8 Sloped Beam	2	EA	100.00	200.00
28	3-1/2"x14" PSL Ridge Beam	2	EA	100.00	200.00
29	4"x12" DF Ridge Beam	2	EA	100.00	200.00
30	2x8 Hip Beam	2	EA	100.00	200.00
31	6x8 Cedar Beam	2	EA	100.00	200.00
32	8x12 Cedar Beam	2	EA	100.00	200.00
33	2x12 DF#2 Ceiling Joist @ 24" O.C	2	EA	100.00	200.00
34	Standard Joist	2	EA	100.00	200.00
35	2x8 Valley Beam	2	EA	100.00	200.00
36	2x8 DF#2 Rafter @ 24" O.C & 5/8" CDX Plywood Sheathing	2	EA	100.00	200.00
37	Standard Joist	2	EA	100.00	200.00
38	2x10 DF#2 Flat Roof Joist @ 24" O.C & 5/8" CDX Plywood Sheathing	2	EA	100.00	200.00
39	Standard Joist	2	EA	100.00	200.00
40	2x10 Floor Joist @ 16" O.C & 5/8" Plywood Sheathing	2	EA	100.00	200.00
41	Standard Joist	2	EA	100.00	200.00
42	2x4 Ceiling Joist @ 16" O.C	2	EA	100.00	200.00
43	Standard Joist	2	EA	100.00	200.00
44	2x8 DF Rafter @ 24" O.C & 5/8" Plywood Sheathing	2	EA	100.00	200.00
45	Standard Joist	2	EA	100.00	200.00
46	14" TJI 360 Floor Joist @ 16" O.C & 1-1/8" T&G Floor Plywood Sheathing	2	EA	100.00	200.00
47	Standard Joist	2	EA	100.00	200.00
48	2x6 DF#2 Ceiling Joist @ 16" O.C	2	EA	100.00	200.00
49	Standard Joist	2	EA	100.00	200.00
50	Standard Joist	2	EA	100.00	200.00
51	Standard Joist	2	EA	100.00	200.00
52	Standard Joist	2	EA	100.00	200.00
53	Standard Joist	2	EA	100.00	200.00
54	Standard Joist	2	EA	100.00	200.00
55	14" TJI 360 Floor Joist @ 16" O.C & 5/8" Plywood Sheathing	2	EA	100.00	200.00
56	Standard Joist	2	EA	100.00	200.00
57	2x12 DF#2 Joist @ 16" O.C & 3/4" T&G Floor Plywood	2	EA	100.00	200.00
58	Standard Joist	2	EA	100.00	200.00
59	2x10 DF#2 Ceiling Joist @ 24" O.C	2	EA	100.00	200.00
60	Standard Joist	2	EA	100.00	200.00
61	1-3/4"x11-1/4" LVL Flat Roof Joist & 3/4" CDX Plywood Roof Sheathing	2	EA	100.00	200.00
62	Standard Joist	2	EA	100.00	200.00
63	2x8 DF#2 Flat Roof Joist & 5/8" Plywood Sheathing	2	EA	100.00	200.00
64	Standard Joist	2	EA	100.00	200.00
65	2x10 DF#2 Rafter @ 24" O.C & 5/8" CDX Plywood Sheathing	2	EA	100.00	200.00
66	Standard Joist	2	EA	100.00	200.00
67	2x12 DF#2 Ceiling Joist @ 24" O.C	2	EA	100.00	200.00
68	Standard Joist	2	EA	100.00	200.00
69	2x8 Fascia Rim	2	EA	100.00	200.00
70	2x12 Fascia Rim	2	EA	100.00	200.00
71	1-3/4" LSL Rim	2	EA	100.00	200.00
72	1-3/4" LSL Blocking	2	EA	100.00	200.00
73	2x4 Blocking	2	EA	100.00	200.00
74	2x8 Ledger	2	EA	100.00	200.00
75	CS16 Strap 4L @ 48" O.C	2	EA	100.00	200.00
76	ECCQ46" Simpson	2	EA	100.00	200.00
77	CS16 Strap 4L	2	EA	100.00	200.00
78	EPC246" Simpson	2	EA	100.00	200.00
79	CCQ46" Simpson	2	EA	100.00	200.00
80	CMSTC16" Strap 4L	2	EA	100.00	200.00
81	MSTC48B3" Bent Strap	2	EA	100.00	200.00
82	CMSTC16" Strap 6L	2	EA	100.00	200.00
83	CMSTC16" Simpson 10L	2	EA	100.00	200.00
84	CS14" Strap 4L	2	EA	100.00	200.00
85	CS16" Strap 6L	2	EA	100.00	200.00
86	ECCQ66" Simpson	2	EA	100.00	200.00
87	LCE66" Simpson	2	EA	100.00	200.00
88	CCQ66" Simpson	2	EA	100.00	200.00
89	CCQ46" Simpson	2	EA	100.00	200.00
90	CS16" Simpson 4L	2	EA	100.00	200.00
91	ECCQ46" Simpson	2	EA	100.00	200.00
92	CCQ46" Simpson	2	EA	100.00	200.00
93	CMSTC16" Strap 5L	2	EA	100.00	200.00
94	HUC412"	2	EA	100.00	200.00
95	HU412" Simpson	2	EA	100.00	200.00
96	LPC246" Simpson	2	EA	100.00	200.00
97	HHUS5.50/10	2	EA	100.00	200.00
98	HHUS410" Simpson	2	EA	100.00	200.00
99	CMST14" Strap Simpson 6L	2	EA	100.00	200.00
100	CMSTC16" Strap (469Ct)	2	EA	100.00	200.00
101	CMST14" Strap (647Sk)	2	EA	100.00	200.00
102	MSTC48B3" Strap Simpson 21"	2	EA	100.00	200.00
103	New Count	2	EA	100.00	200.00
104	HU88" Simpson	2	EA	100.00	200.00
105	PC246" Simpson	2	EA	100.00	200.00
106	BA412" Harger	2	EA	100.00	200.00

City of Menlo Park
 APPROVED DOCUMENT
 ELECTRONIC COPY
 BLD2023-02880

SECOND FLOOR / LOW ROOF FRAMING PLAN



4x6 Post (10'-6" H)	6.0 EA
2x6 DF#2 Ceiling J...	853.9 SQ FT
Standard Joist	513.0 FT
4x8 DF Ceiling BM	6.0 FT
2x8 Blocking	11.5 FT
4x8 DF Beam	12.0 FT
2x8 DF#2 Rafter @ ...	592.2 SQ FT
Standard Joist	457.0 FT
4x12 DF#1 Ridge Beam	13.0 FT
5-1/4"x11-1/4" PSL Beam	21.0 FT
4x8 DF Beam	48.0 FT
5-1/4"x14" PSL Beam	42.0 FT
4x10 DF Beam	50.0 FT
2x8 Valley Beam	12.0 FT
2x8 Roof Rafter @ 2...	40.8 SQ FT
Standard Joist	44.0 FT
2x6 Flat Roof Joist ...	609.0 SQ FT
Standard Joist	481.0 FT
6x10 Header	14.0 FT
6x12 DF#1 Header	20.0 FT
4x12 DF Beam	10.0 FT
"CMSTC16" Simpson 4'L	8.0 EA
"EPCZ46" Simpson	4.0 EA
"ECCQ46" Simpson	1.0 EA
"HUC412" Simpson	2.0 EA
"LSSR410" Simpson	8.0 EA
"HU410" Simpson	8.0 EA
"ECCQ66" Simpson	6.0 EA
"CMSTC16" Strap 4'L	2.0 EA
"CS16" Strap 4' @ 48" ...	12.4 FT



STRUCTURAL OBSERVATION REQUIRED
 ALL PLYWOOD SHEARWALL NAILING AND SEISMIC HARDWARE SHALL BE OBSERVED BY MORRIS SHAFFER ENGINEERING. IT IS THE SOLE RESPONSIBILITY OF THE CONTRACTOR TO CONTACT M.S.E. TO SCHEDULE REQUIRED OBSERVATIONS. SEE SHEET S0.1 FOR ADDITIONAL INFORMATION

- FRAMING PLAN NOTES**
- SEE SHEET S0.1 FOR DIMENSIONS, STRUCTURAL NOTES AND CONNECTIONS. SEE SHEETS S1.1, S1.2 AND S1.3 FOR TYPICAL FRAMING DETAILS.
 - ALL MEMBERS SHALL BE BRUNNEN OR SPT AT 24 INCHES AND S40901 AT 24 INCHES UNLESS OTHERWISE NOTED. ALL MEMBERS SHALL BE GRADE DRY KILN DRIED OR TREATED TO PREVENT ROT AND INSECT DAMAGE. ALL MEMBERS SHALL BE CALLED OUT ON PLAN EXCEPT FOR THE SIDE ROOF TRUSS ABOVE.
 - ALL EXTERIOR WALLS AND ROOF TRUSSES SHALL HAVE CORNER BRACE JOIST PLATES PER SDC. WHERE SPACES ARE NOT POSSIBLE, A STRAP IS REQUIRED AT THE CORNER OR JOIST PLATE.
 - CONTRACTOR IS RESPONSIBLE FOR ALL BRACING AND BRACING DURING CONSTRUCTION UNTIL ALL FINAL CONNECTIONS HAVE BEEN COMPLETED IN ACCORDANCE WITH THE STRUCTURAL DRAWINGS.
 - DO NOT SCALE DRAWINGS. SCALE IS FOR REFERENCE ONLY. ALL DIMENSIONS SHOWN ON THE STRUCTURAL PLANS ARE FOR GENERAL INFORMATION ONLY AND SHALL BE VERIFIED BY THE CONTRACTOR PRIOR TO CONSTRUCTION.
 - VERIFY ALL DIMENSIONS WITH ARCHITECTURAL DRAWINGS BEFORE PROCEEDING WITH WORK. DIMENSIONS SHALL BE PARALLEL TO THE ATTACHMENT OF THE MEMBER AND ARCHITECT PRIOR TO PROCEEDING WITH WORK.

FRAMING LEGEND

---	WALL BELOW (SHOWS MARKS)
---	SHEARWALL BELOW
---	ROOF BELOW (R/C, D/S, S/C)
---	ROOF ABOVE AND BELOW (MATCH WALL, TRUSS OR JOIST (D/S, S/C))
---	ROOF ABOVE, MATCH WALL THICKNESS (R/C, D/S, S/C)
---	FRAMING MEMBER AT IMPROVING THROUGH (WALL OR TRUSS JOIST)
---	JOIST (R/C, D/S) 24" CENTER @ 24" SPACING (R/C, D/S, S/C)
---	HEADER FRAMING BELOW (SEE PLAN/SECTION FOR)
---	STRAP LENGTH (MARKING LOC)
---	STRAP CONNECTOR TO 1" TYP. STRAP LENGTH AND MARKING LOCATION (D/S, S/C) WALL OPEN. SEE STRAP SCHEDULE SHEET FOR ADDITIONAL MARKING INFORMATION
---	BUILD UP WITH BEVELS LOW ROOF FRAMING AT GARAGE

SECOND FLOOR CEILING FRAMING PLAN
 SCALE: 1/8" = 1'-0"
 DO NOT SCALE DRAWINGS

MORRIS SHAFFER ENGINEERING
 1000 WILSON PARK BLVD
 SAN CARLOS, CA 94068
 TEL: (925) 253-1000
 FAX: (925) 253-1001
 WWW.MORRISSHAFFER.COM

NEW RESIDENCE
 SECOND FLOOR CEILING PLAN



O'MALLEY O
 1585 BAY LAUREL
 MENLO PARK, CA



DATE: 09/14/2023
PROJECT: 1585 BAY LAUREL
CLIENT: O'MALLEY O
DESIGNER: MORRIS SHAFFER
CHECKED: MORRIS SHAFFER
DATE: 09/14/2023
PROJECT: 1585 BAY LAUREL
CLIENT: O'MALLEY O
DESIGNER: MORRIS SHAFFER
CHECKED: MORRIS SHAFFER
DATE: 09/14/2023

3-1/2"x14" PSL Ridge B...	82.0 FT	
4x10 DF Valley Beam	141.0 FT	
3-1/2"x11-1/4" PSL Rid...	48.0 FT	
4x8 Sloped DF Beam	62.0 FT	
2x8 Beam	42.0 FT	
2x8 DF#2 Rafter @...	1722.4 SQ FT	
Standard Joist	1233.0 FT	
"LSSR410" Simpson	16.0 EA	
"CCQ46" Simpson	4.0 EA	
"ECCQ46" Simpson	6.0 EA	
"CS16" Strap 6'L	2.0 EA	
"CS14" Strap 4'L	4.0 EA	
"CMSTC16" Strap 4'L	4.0 EA	
"HU48" Hanger	4.0 EA	
"CS16" 4'L @ 48" O.C	128.1 FT	
2x8 Fasia Rim	181.2 FT	

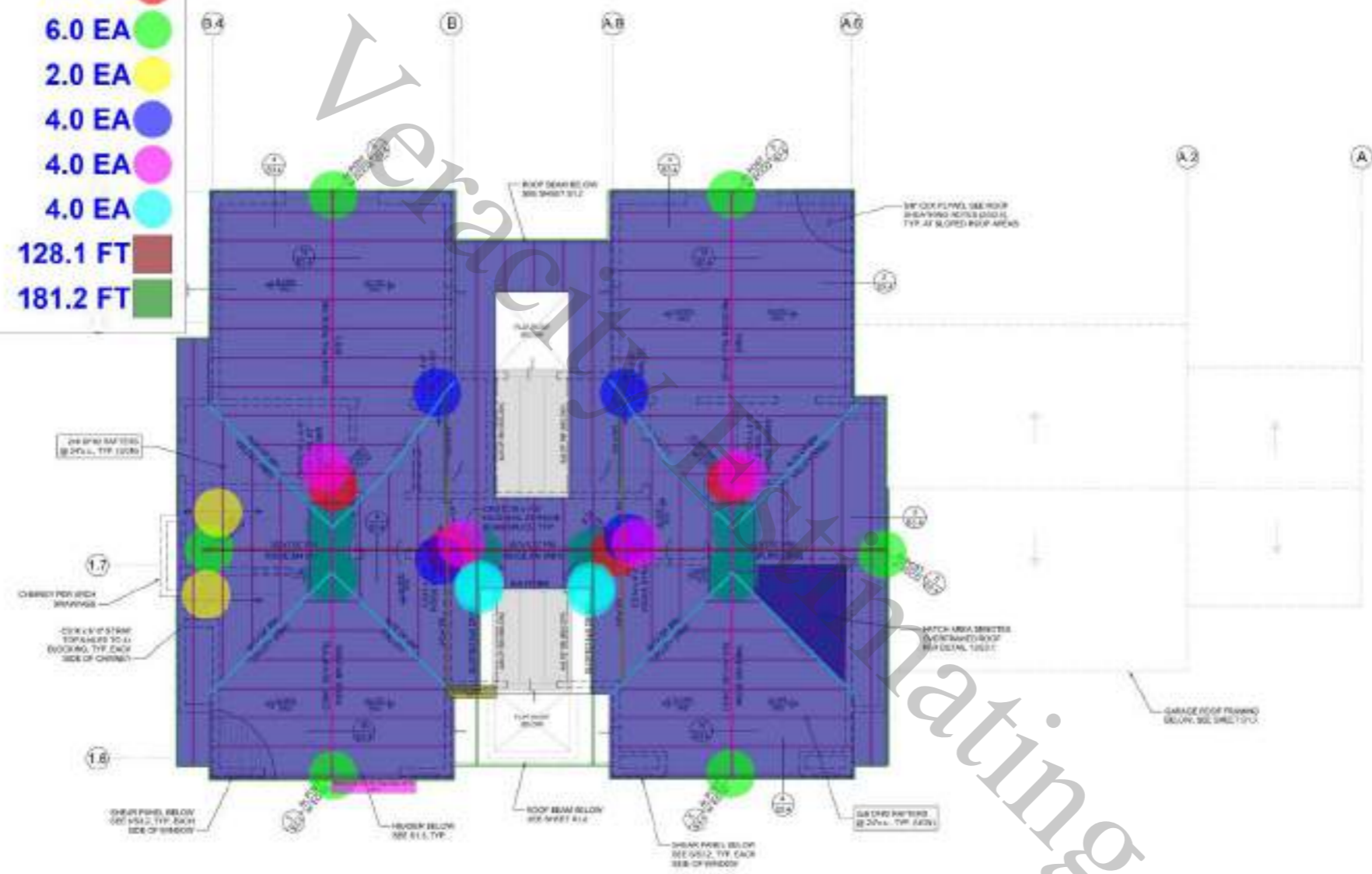
STRUCTURAL OBSERVATION REQUIRED
 ALL PLYWOOD SHEARWALL NAILING AND SEISMIC HARDWARE SHALL BE OBSERVED BY MORRIS SHAFFER ENGINEERING. IT IS THE SOLE RESPONSIBILITY OF THE CONTRACTOR TO CONTACT M.S.E. TO SCHEDULE REQUIRED OBSERVATIONS. SEE SHEET S0.1 FOR ADDITIONAL INFORMATION

FRAMING PLAN NOTES

- SEE SHEET S0.1 FOR GENERAL STRUCTURAL NOTES AND DIMENSIONS. SEE SHEETS S0.2, S0.3, S0.4 FOR TYPICAL FRAMING DETAILS.
- ALL ROOFING SHALL BE MIN 20# GSB AT 24" WELLS AND 18" WELLS AT 24" WALLS. 20# GSB TO BE FINISHED FOR ROOFING. 18" WELLS TO BE FINISHED FOR ROOFING. 20# GSB TO BE FINISHED FOR ROOFING. 18" WELLS TO BE FINISHED FOR ROOFING.
- ALL EXTERIOR WALLS AND SHEAR WALLS SHALL HAVE 1/2" GYPSUM BOARD TOP PLATES FOR GABLES. WHERE SPACES ARE NOT POSSIBLE, A STRAP IS REQUIRED AT THE BRICK AND PLATE.
- CONTRACTOR IS RESPONSIBLE FOR ALL SHEAR WALL BRACKETS DURING CONSTRUCTION. (ATE) ALL WALL CONNECTIONS SHALL BE COMPLETED IN ACCORDANCE WITH THE STRUCTURAL DRAWINGS.
- WHEN WORKING WITH AN ARCHITECTURAL DRAWING, THE CONTRACTOR SHALL VERIFY ALL DIMENSIONS AND SHALL BE RESPONSIBLE FOR THE CORRECTION OF ANY INFORMATION AND SHALL BE RESPONSIBLE FOR THE CORRECTION OF ANY INFORMATION AND SHALL BE RESPONSIBLE FOR THE CORRECTION OF ANY INFORMATION.
- VERIFY ALL DIMENSIONS WITH ARCHITECTURAL DRAWINGS BEFORE PROCEEDING WITH WORK. VERIFY ALL DIMENSIONS WITH THE ARCHITECTURAL DRAWINGS AND ARCHITECT PRIOR TO PROCEEDING WITH WORK.
- SEE ARCHITECTURAL DRAWINGS FOR ALL PROPOSED FUTURE FOOTING PLACEMENTS. THE ROOF FRAMING SHALL BE DESIGNED TO ACCOMMODATE THE ADDITIONAL HEIGHT OF THE FOOTING.

FRAMING LEGEND

- WALLS BELOW SHOWN GABLET
- SHEARWALL BEAMS
- POST BELOW WALL (2X8, 4X8)
- GYPSUM BOARD (1/2" GYPSUM BOARD)
- STRAP (COMPARTMENT TO TOTAL STRAP LENGTH AND MOUNTING LOCATION) (SEE STRAP LENGTH MOUNTING DETAIL)
- HANGER / CHAIR BRACKETS BELOW (SEE BRACKETS DETAIL)
- SOLID PATCH SHEETS CORNER ROOF (MINIMUM 24" MINIMUM @ 24" O.C. SEE ARCH DRAWINGS FOR SLOPE)



City of Menlo Park
 APPROVED DOCUMENT
 ELECTRONIC COPY
 BLD2023-02880

ROOF FRAMING PLAN



O'MALLEY O
 1585 BAY LAUREL
 MENLO PARK, CA



DATE: 09/14/2023
TIME: 10:00 AM
PROJECT: 23-0000
DATE: 09/14/2023
TIME: 10:00 AM
PROJECT: 23-0000

S1.4